

Going Online with an NA HMI

Steps

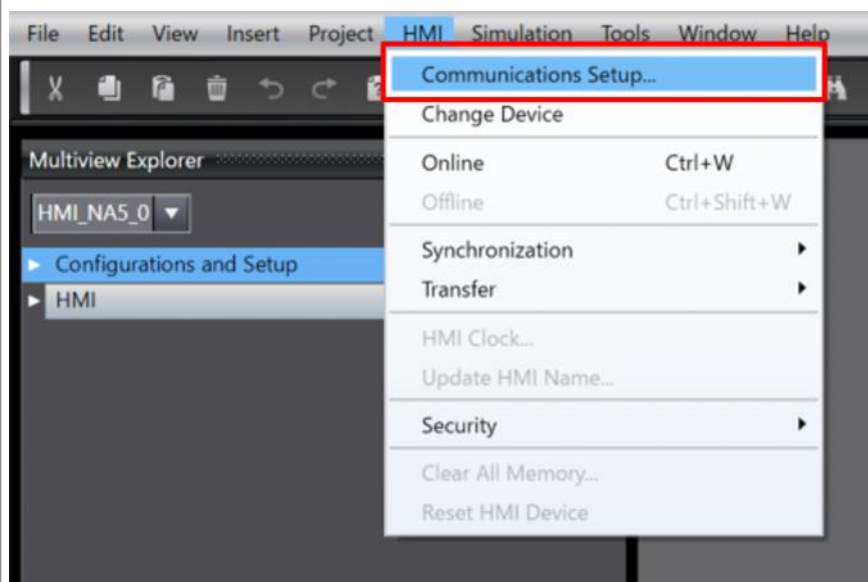
This section describes how to go online with the NA-series touch panel.

- ① Open the Communications Setup Dialog Box.
- ② Configure the communications settings according to the connection type.
- ③ Go online.

Detailed Steps

① Open the Communications Setup Dialog Box.

Click [HMI] - [Communications Setup] from the menu bar.

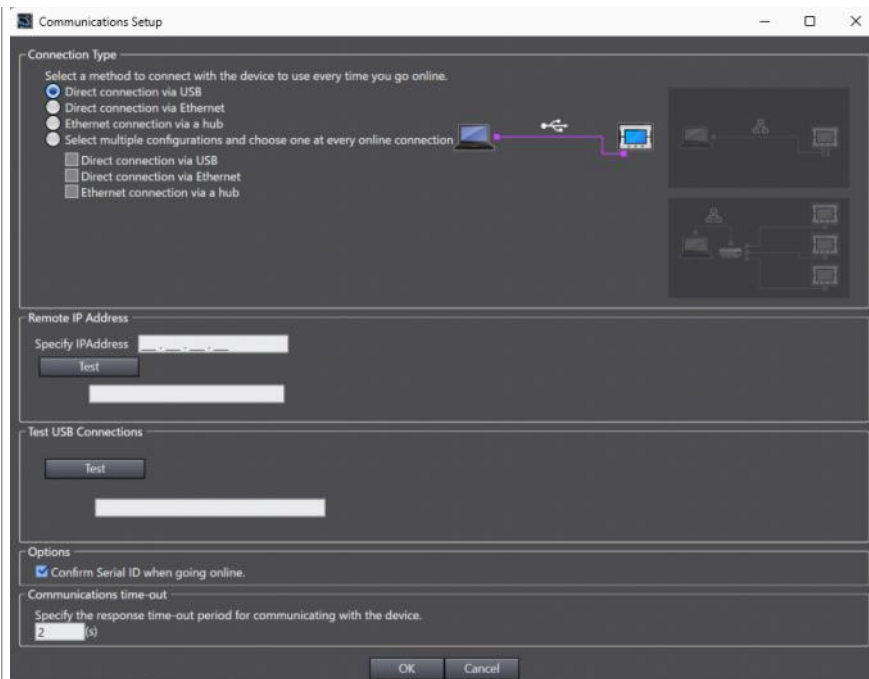


② Configure the communications settings according to the connection type.

Please select from the following connection types:

- Direct connection via USB
- Direct connection via Ethernet: Specifying the IP address is not required (Port 2 only)
- EtherNet connection via a hub: Specifying the IP address is required

When using "Ethernet connection via a hub" or "Direct connection via USB" connection type, you can check communications by clicking the appropriate [Test] button.



③ Go online.

You can go online by clicking the icon shown in the red frame below.



Remarks

The following dialog box may be displayed when you go online.

This is asking whether you want to alter the the HMI device name and serial ID of the online project to match the actual device or not.

Whether you select Yes or No, it does not affect the actual device while online.

