

# Uploading Data from NA

## Steps

This section describes how to upload (read) data from the NA-series touch panel.

- ① Launch the Sysmac Studio and open the project.
- ② Configure the communications settings according to the connection type.
- ③ Press the [Upload] button.

## Detailed Steps

If you intend to upload the PLC data to the same project, it is recommended to upload the PLC data first. The device reference may not be linked to an internal device if the PLC data was not uploaded first.

[Countermeasure When the Device Reference is Not Linked to an Internal Device](#)

Refer to the link below for the instructions to upload a project from the PLC.

[Uploading an NJ/NX Project \(New Project\)](#)

[Uploading an NJ/NX Project \(Existing Project\)](#)

- ① **Launch the Sysmac Studio and open the project.**

Open the existing project file or a new project file.

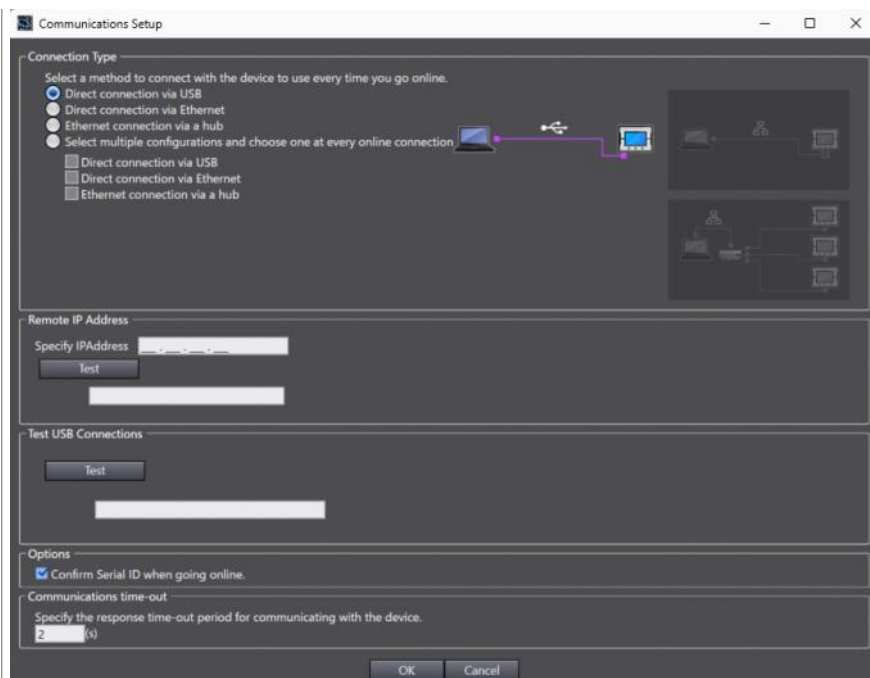
\* When you add an NA touch panel to a new or existing project file, the version in the figure below does not have to match the actual device.



- ② **Configure the communications settings according to the connection type. Please select from the following connection types.**

- Direct connection via USB
- Direct connection via Ethernet: Specifying the IP address is not required (Port 2 only)
- EtherNet connection via a hub: Specifying the IP address is required

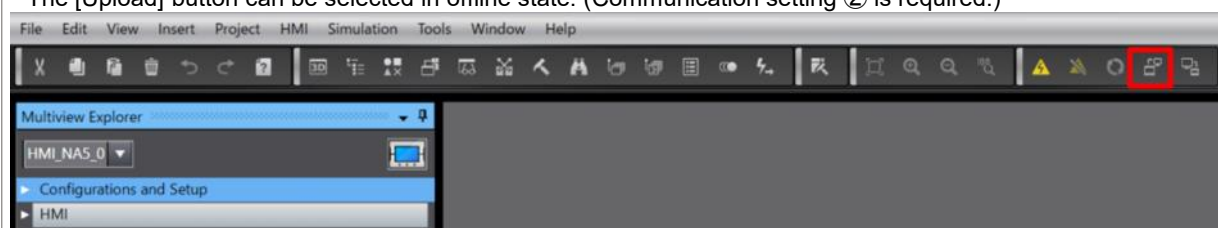
When using "Ethernet connection via a hub" or "Direct connection via USB" connection type, you can check communications by clicking the appropriate [Test] button.



### ③ Press the [Upload] button.

You can upload the project by clicking the icon in the red frame in the figure below.

\* The [Upload] button can be selected in offline state. (Communication setting ② is required.)



\* The above upload method is a feature available from the Sysmac Studio Ver.1.45 and higher.  
If there is no [Upload] button, please check your tool version.

### Remarks

Refer to the link below for the instructions to save data.

[Obtaining Backups from NA](#)