

Procedures When the System Program Versions Do Not Match

Steps

If there is no compatibility between the NA version in the project and the actual device version, the following message is displayed when you go online.



The explanations for the procedures for the following two use cases are provided.

(1) Procedures for going online and writing data

1-1: Matching the project version to the actual device

1-2: Matching the device version to the project version

(2) Procedures for going online and reading data

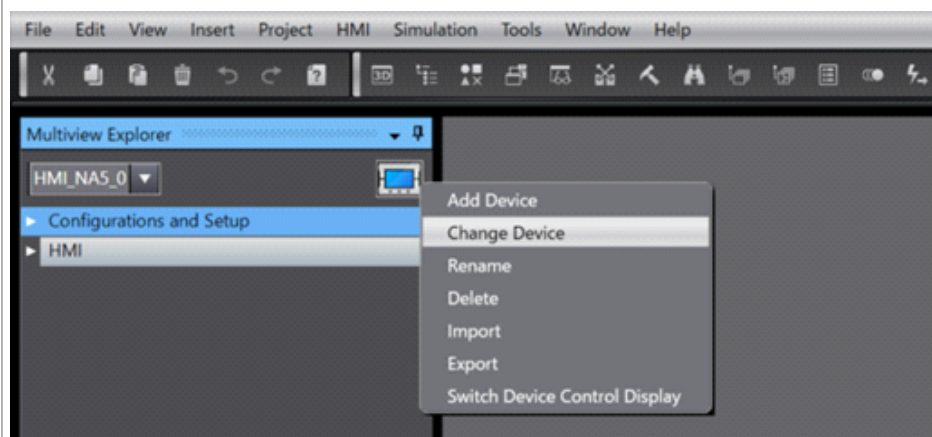
Detailed Steps

(1) Procedures for going online and writing data

1-1: Matching the project version to the actual device

① Open the Change Device dialog box.

Right-click on the HMI icon in the Multiview Explorer and select [Change Device].



② Change to a version corresponding to the actual device version.

Change the version by referring to the version correspondence table listed in the remarks section of this page.



*** Note: The HMI project version cannot be changed to a lower version.
Be aware that you cannot downgrade the version of a project once it has been saved.**

1-2: Matching the device version to the project version

① Go online.

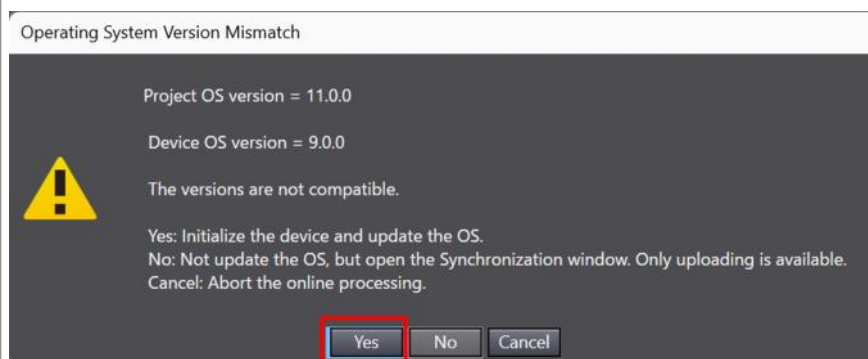
Go online from the project to the actual device.

② Change the version of the actual device.

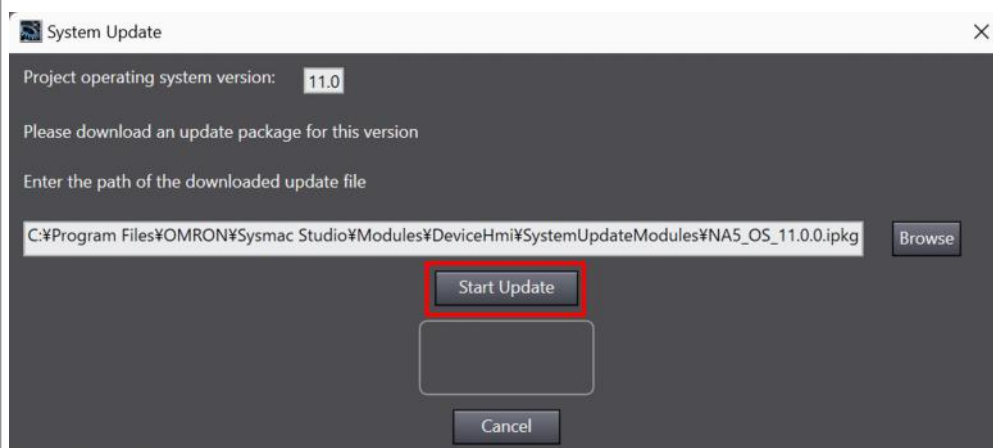
If the online project version and the actual device version are different, the following dialog box is displayed after going online.

If you want to change the version of the actual device, click the [Yes] button in the dialog box.

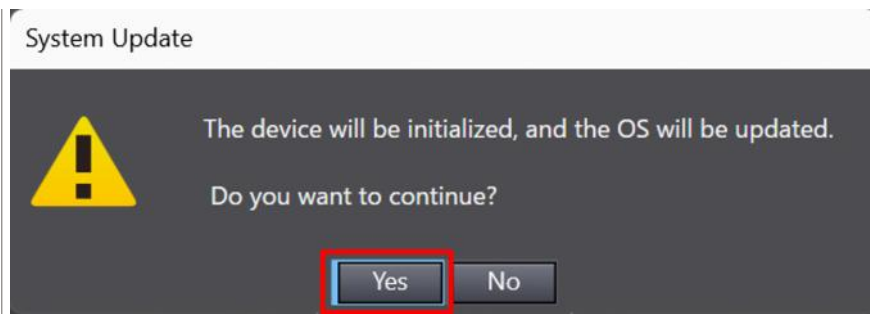
*** Be aware that if you change the version of the actual device, the data on the actual device are all cleared. Make sure that you have saved the project data from the device in advance to write back the device after updating.**



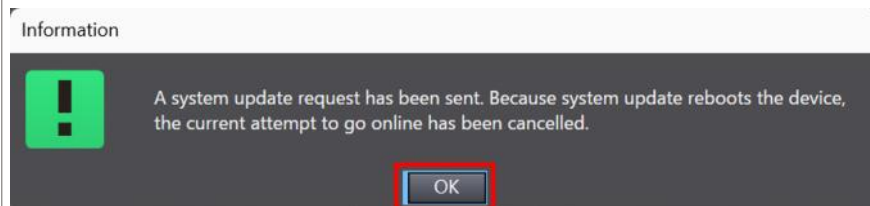
Click the [Start Update] button.



Click the [Yes] button.

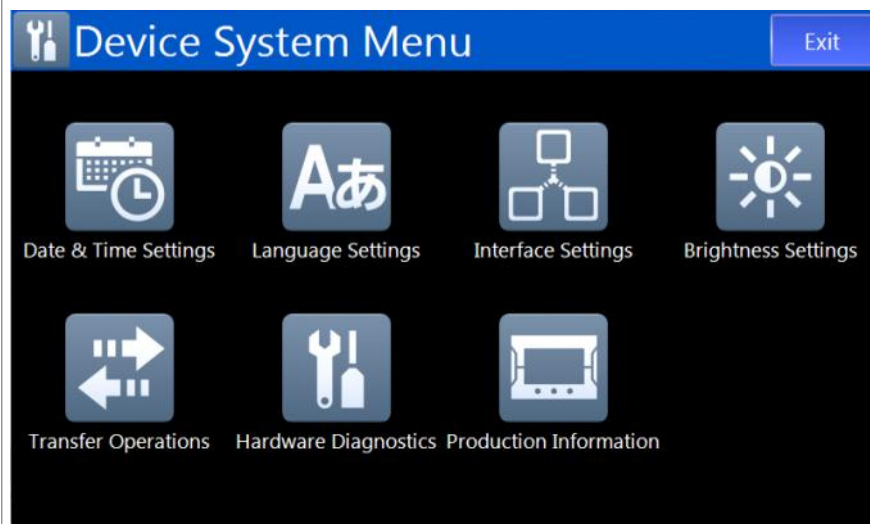


Click the [OK] button.



③ Download the project data.

After the version update is complete, the following system menu will be displayed on the NA. Download data by referring to "[Downloading Data to NA](#)".

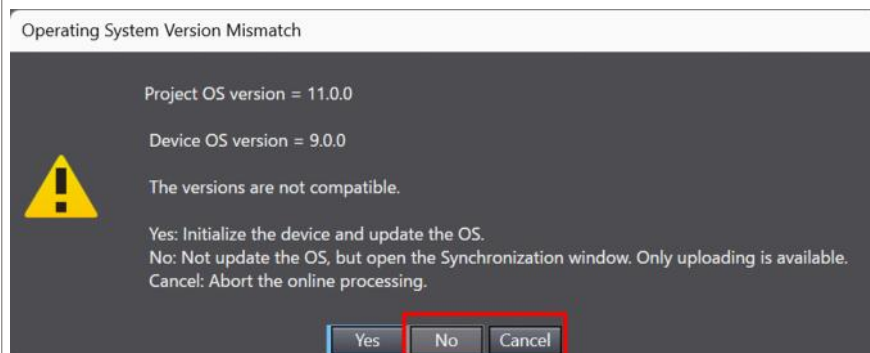


(2) Procedures for going online and reading data

When the following dialog box is displayed, click the [No] or [Cancel] button.

[No] => Updating is not executed and online connection is established. (Only uploading is enabled.)

[Cancel] => Neither updating nor online connection are executed.



You can read the data as matching to the actual device version by following the upload method in the following link.

Remarks

Sysmac Studio Corresponding Versions listed in A-7-3 of the NA-series Programmable Terminal Software User's Manual (Cat. No. V118).

Sysmac Studio	NA5-□□□□□□		NA5-□□□□□□-V1*1		Soft-NA	
	Runtime	System program	Runtime	System program	Runtime	Soft-NA
1.10	1.00	1.1.0	-	-	-	-
1.11 to 1.12	1.01*2	2.0.0	-	-	-	-
1.13	1.02*3	3.0.3	-	-	-	-
1.14	1.03*4	4.3.3	-	-	-	-
1.15	1.03*4*5	4.4.1	-	-	-	-
1.16	1.05*4	5.0.3	-	-	-	-
1.17	1.07*4	5.1.5	-	-	-	-
1.18	1.08*4	5.1.5	-	-	-	-
1.19	1.08*3	5.2.2	-	-	-	-
1.20	1.08*4	6.0.2	-	-	-	-
1.23	1.09*4	7.0.5	-	-	-	-
1.24	1.10*4	7.1.2	-	-	-	-
1.24.2	1.10*4	7.2.1	-	-	-	-
1.26	1.10*4	7.3.0	-	-	-	-
1.27	1.11*4	7.3.0	-	-	-	-
1.31	1.12*4	7.4.0	-	-	-	-
1.40	1.13*4	8.0.0	1.08	6.0.2	1.11	1.01
			1.09	7.0.5		
			1.10	7.4.0		
			1.11	7.4.0		
			1.12	7.4.0		
			1.13	8.0.0		
1.43	1.14*4	8.0.0	1.14	8.0.0	1.11	1.01
1.44	1.14*4	8.1.0	1.14	8.1.0	1.11	1.01
1.45	1.15*4	9.0.0	1.15	9.0.0	1.12	1.02
					1.13	
					1.14	
					1.15	
1.50	1.16*4	10.1.0	1.16	10.1.0	-	-
1.52	1.16*4	10.2.0	1.16	10.2.0	-	-
1.54	1.17*4	11.0.0	1.17	11.0.0	1.16	1.02
					1.17	

*1. NA5-□□□□□□-V1 supports only Runtime Ver.1.08 or higher.

*2. The projects created in version 1.00 are converted to version 1.01.

*3. The projects created in either version 1.00 or 1.01 are converted to version 1.02.

*4. Projects created in version 1.00, 1.01, or 1.02 are converted to version 1.03.

*5. The runtime version will be converted to 1.04 if the HMI Extended Option is enabled.