

Events and Actions

Steps

You can set actions (behavior) for events of HMI objects.

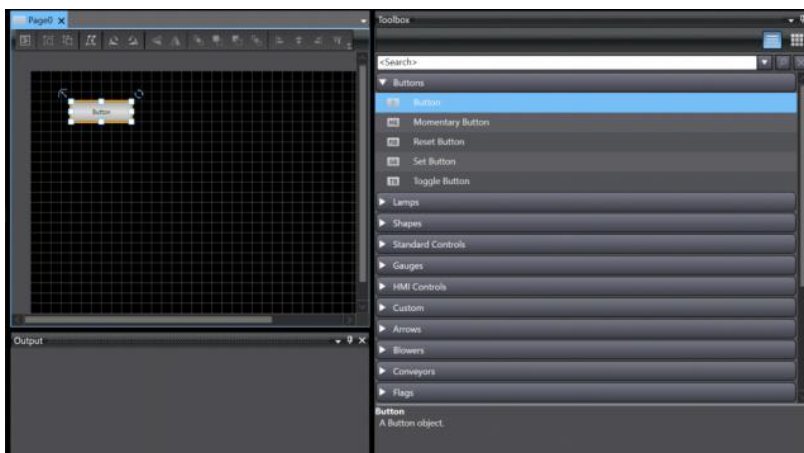
Example actions: Page switching / Subroutine start / Troubleshooting display

- ① Place the object to set the action (behavior).
- ② Display the Events and Actions Window.
- ③ Select the event that will trigger the action (behavior).
- ④ Select the action (behavior) for the event.
- ⑤ Configure detailed action (behavior) settings.

Detailed Steps

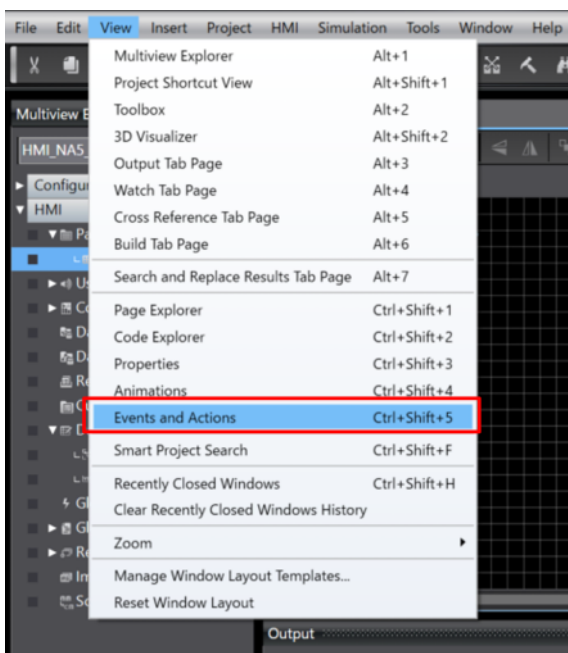
① Place the object to set the action (behavior).

Drag and drop an object from the toolbox onto the edit pane.



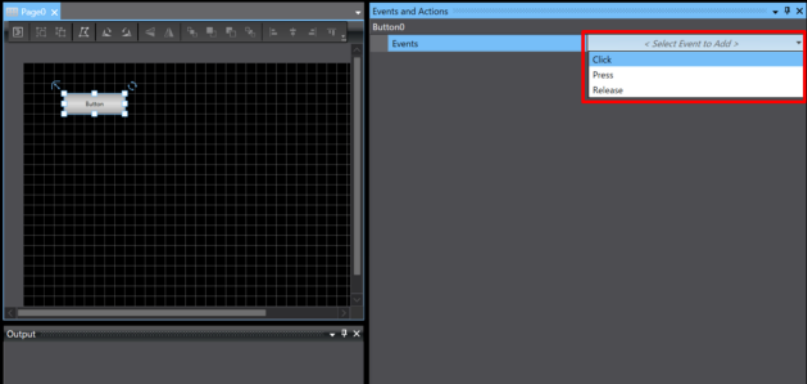
② Display the Events and Actions Window.

Click [View] - [Events and Actions] from the menu bar.

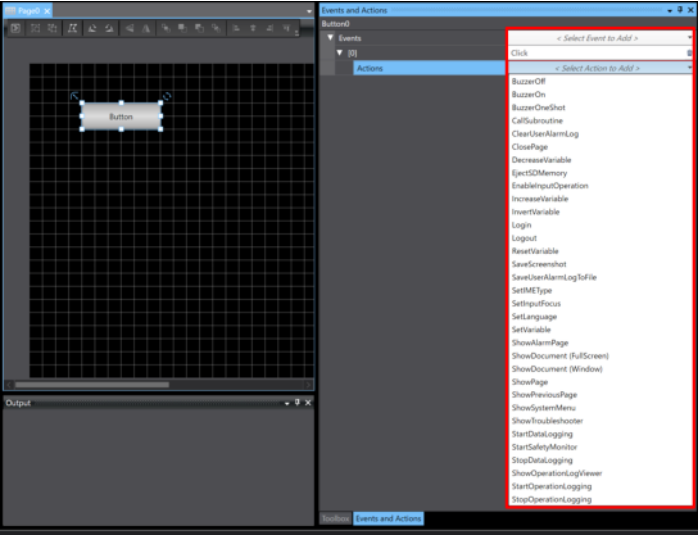


③ Select the event that will trigger the action (behavior).

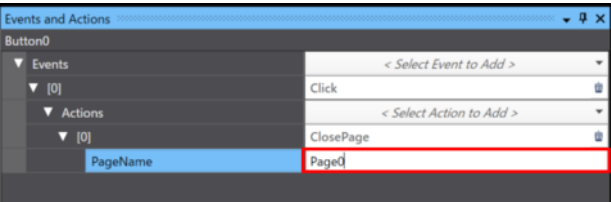
Select the event item from the “Events” dropdown list in the Events and Actions Window.



④ Select the action (behavior) for the event.
Select the action (behavior) for the selected event.



⑤ Configure detailed action (behavior) settings.
Configure the settings for the action.



| Remarks |
|---|
| For details on Events and Actions, refer to the NA-series Programmable Terminal Software User's Manual (Cat. No. V118). |