

Function Overview of Device System Menu

Steps

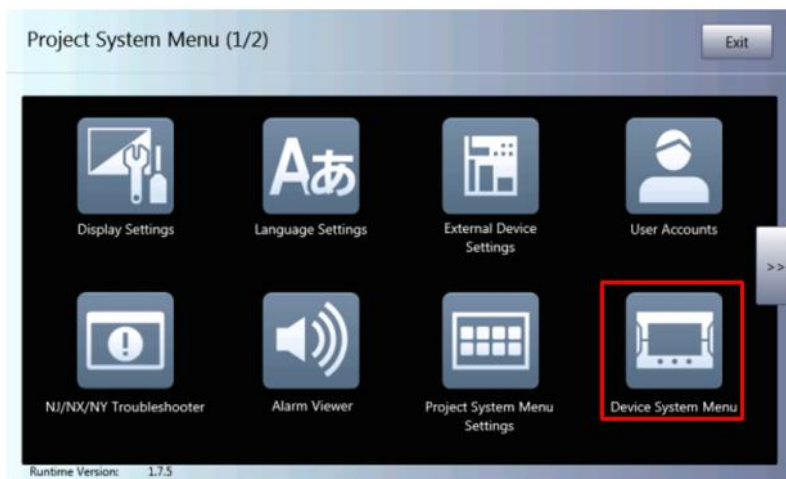
This section describes how to navigate the Device System Menu that is used for setting or verifying the IP address, and setting the built-in clock, etc. of NA Unit, and the functions of each menu item.

- ① How to navigate the Device System Menu
- ② Each function of the Device System Menu

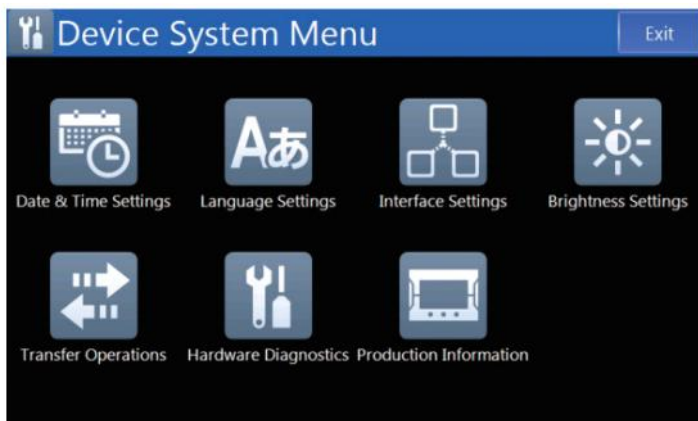
Detailed Steps

① How to navigate the Device System Menu

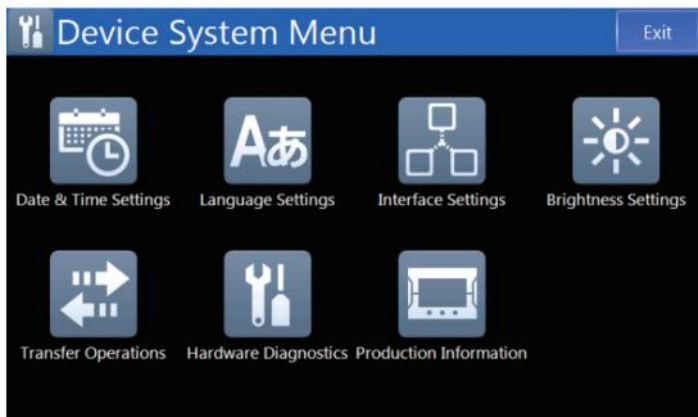
Double-tap any of the four corners of the NA screen to display the project system menu.
Tap the Device System Menu in the lower right.



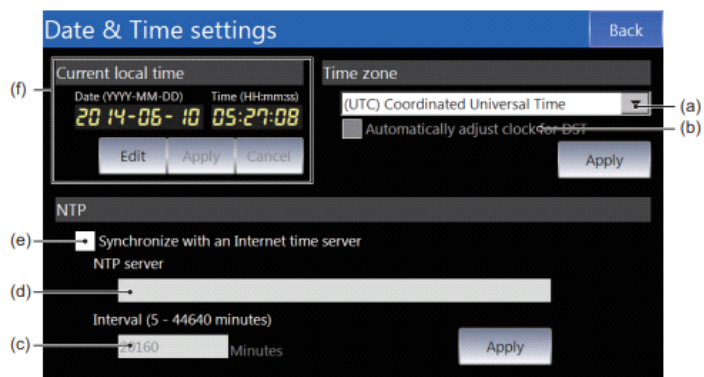
The Device System Menu is displayed.



② Each function of the Device System Menu

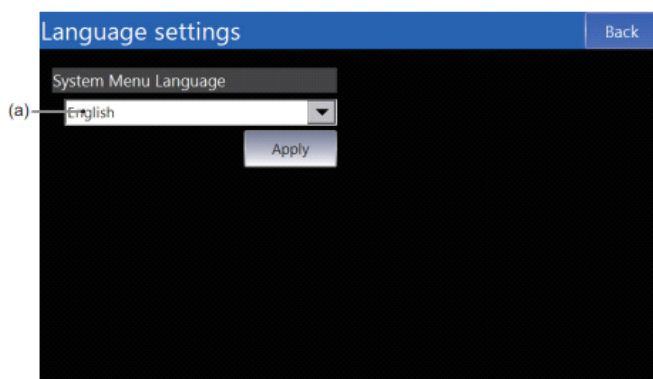


■ Date & Time Settings: You can set the date and time and make settings to synchronize the time with a time server.



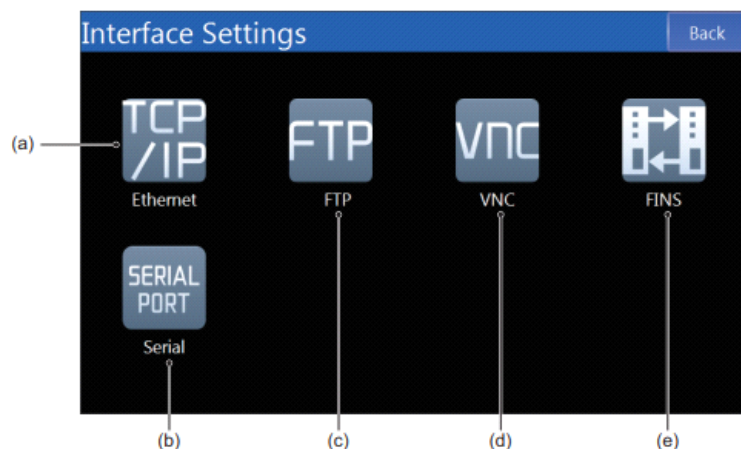
| No. | Item | Description |
|-----|--|---|
| (a) | Time Zone | Sets the time zone. |
| (b) | Automatically adjust clock for DST | Select this check box to automatically compensate for daylight saving time. |
| (c) | Interval | Sets the interval for synchronizing with the NTP server. |
| (d) | NTP Server | Sets the IP address of the NTP server. |
| (e) | Synchronize with an Internet time server | Select this check box to synchronize the time with a time server. |
| (f) | Current Local Time | Sets the current time. |

■ Language Settings: You can set the system language.

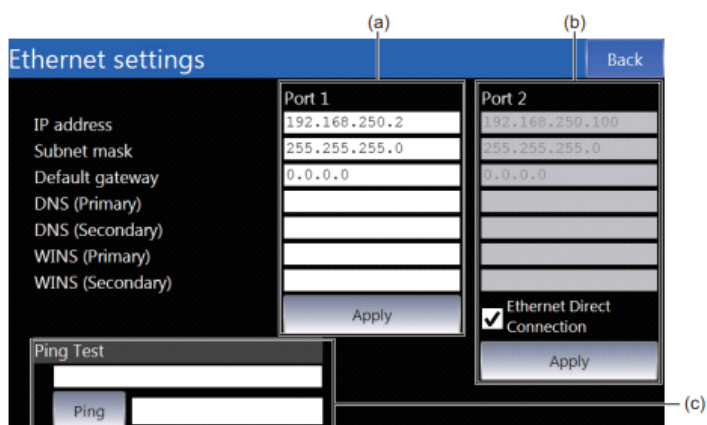


| No. | Item | Description |
|-----|----------------------|--|
| (a) | System Menu Language | Sets the system language. The language settings made from the Project System Menu take priority. |

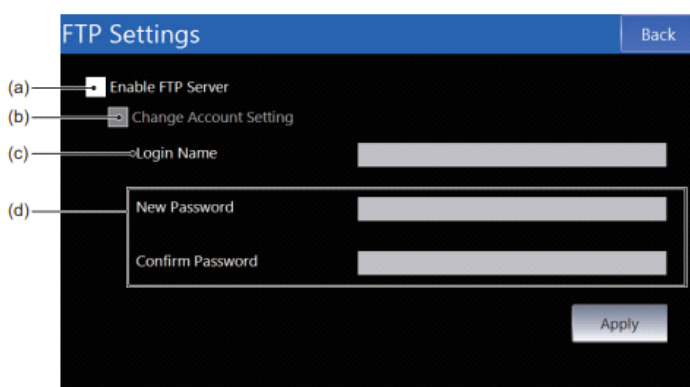
■ Interface Settings: You can set the interface settings (such as IP address) of the NA Unit.



| No. | Item | Description |
|-----|----------|--|
| (a) | Ethernet | Sets the IP address of the NA Unit and other settings. |
| (b) | Serial | Makes settings for the serial port. |
| (c) | FTP | Makes settings for the FTP server. |
| (d) | VNC | Makes settings for VNC. |
| (e) | FINS | Makes settings for FINS. |



| No. | Item | Description |
|-----|--------------------------|--|
| (a) | Ethernet Port 1 Settings | Sets the IP address and other settings for Ethernet port 1. |
| (b) | Ethernet Port 2 Settings | Sets the IP address and other settings for Ethernet port 2. This setting is ignored if you select the <i>Ethernet Direct Connection</i> Check Box. |
| (c) | Ping Test | Executes a ping test for the specified address. |



| No. | Item | Description |
|-----|------------------------|--|
| (a) | Enable FTP server | Select this check box to use the FTP server. |
| (b) | Change Account Setting | Select this check box to change the account. |
| (c) | Login Name | Sets the login name. |
| (d) | Password | Sets the password. |

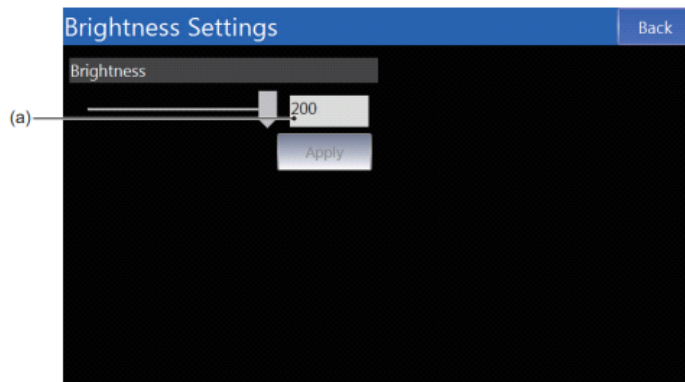


| No. | Item | Description |
|-----|-------------------|---|
| (a) | Enable VNC Server | Select this check box to use the VNC. |
| (b) | Port No. | Sets the port number. |
| (c) | Mode | Sets the mode. |
| (d) | Change Password | Select this check box to change the password. |
| (e) | Password | Sets the password. |

| No. | Item | Description |
|-----|--------------------------------|--|
| (a) | Enable registered client login | Select this check box to set login restrictions. |
| (b) | List of clients | Lists the clients registered at present. |
| (c) | | Edits the selected client. |
| (d) | | Deletes the selected client. |
| (e) | | Adds a new client. |
| (f) | IP Address | Sets the IP address of a client. |
| (g) | MAC Address | Sets the MAC address of a client. |
| (h) | Comment | Sets a comment for a client. |

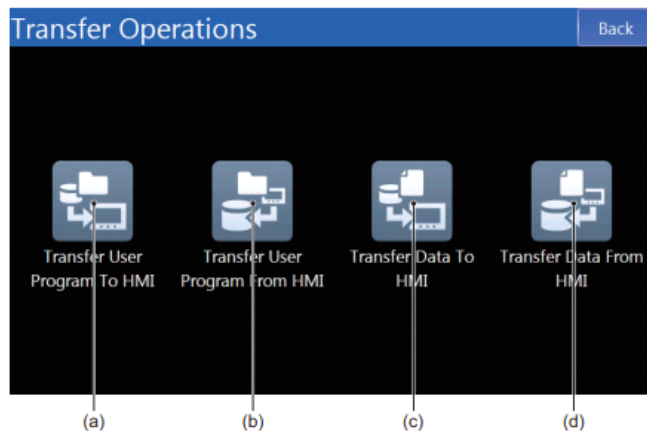
| No. | Item | Description |
|-----|--------------------------|--|
| (a) | Ethernet Port 1 Settings | Sets the FINS network address for Ethernet port 1. The node address is automatically created based on the IP address. |
| (b) | Ethernet Port 2 Settings | Sets the FINS network address for Ethernet port 2. The node address is automatically created based on the IP address. |
| (c) | FINS/UDP Port No. | Displays the FINS/UDP port number. |

■ Brightness Settings: You can set the screen brightness.

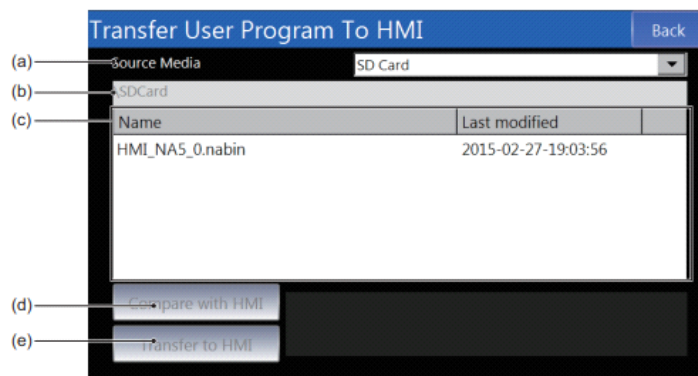


| No. | Item | Description |
|-----|------------|-----------------------------|
| (a) | Brightness | Sets the screen brightness. |

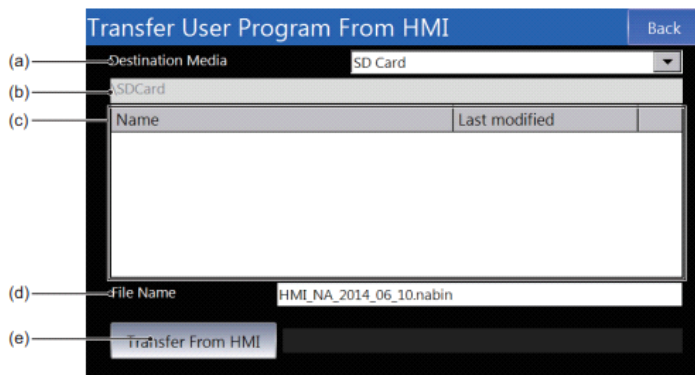
■ Transfer Operations: You can transfer projects and data.



| No. | Item | Description |
|-----|--------------------------------|----------------------------------|
| (a) | Transfer User Program to HMI | Downloads the project. |
| (b) | Transfer User Program from HMI | Uploads the project. |
| (c) | Transfer Data to HMI | Downloads various types of data. |
| (d) | Transfer Data from HMI | Uploads various types of data. |



| No. | Item | Description |
|-----|------------------|--|
| (a) | Source Media | Sets the media that contains the project to download. |
| (b) | Path | Displays the path of the folder displayed at (c). |
| (c) | Folder Contents | Displays the files and folders in the currently open folder. |
| (d) | Compare with HMI | Compares between the selected project and the HMI. |
| (e) | Transfer to HMI | Downloads the selected project to the HMI. |



Transfer User Program From HMI [Back]

(a) Destination Media: SD Card

(b) Path: SDCard

| Name | Last modified |
|------|---------------|
| | |

(d) File Name: HMI_NA_2014_06_10.nabin

(e) Transfer From HMI

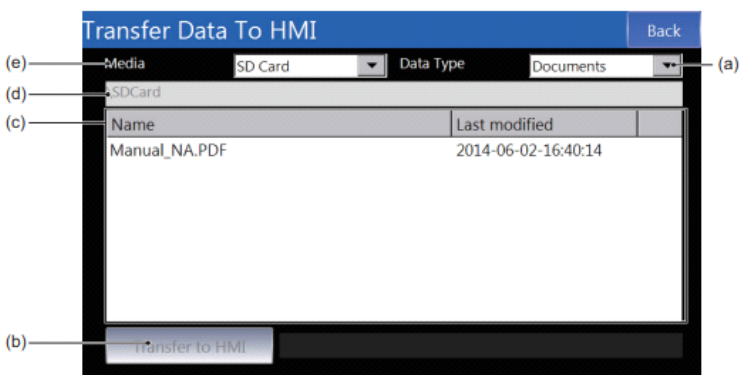
| No. | Item | Description |
|-----|-------------------|---|
| (a) | Destination Media | Sets the media to which to upload the project. |
| (b) | Path | Displays the path of the folder displayed at (c). |
| (c) | Current Folder | Displays the files and folders in the currently open folder. |
| (d) | Destination File | Sets the file name. |
| (e) | Transfer from HMI | Uploads the selected project from the HMI to the destination media. |



Precautions for Correct Use

Projects that are downloaded with Sysmac Studio version 1.10 and projects that are downloaded when the *Transfer source code to the NA device* Check Box is not selected cannot be read by the Sysmac Studio.

You can use projects like these (i.e., projects that do not contain the source code) to create duplicates of the NA Unit with the same project or as backups to restore the NA Unit without using a computer if the NA Unit fails.



Transfer Data To HMI [Back]

(e) Media: SD Card

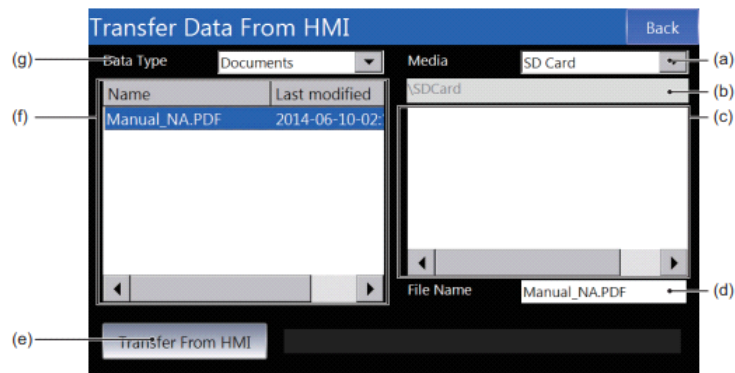
(a) Data Type: Documents

(d) Path: SDCard

| Name | Last modified |
|---------------|---------------------|
| Manual_NA.PDF | 2014-06-02-16:40:14 |

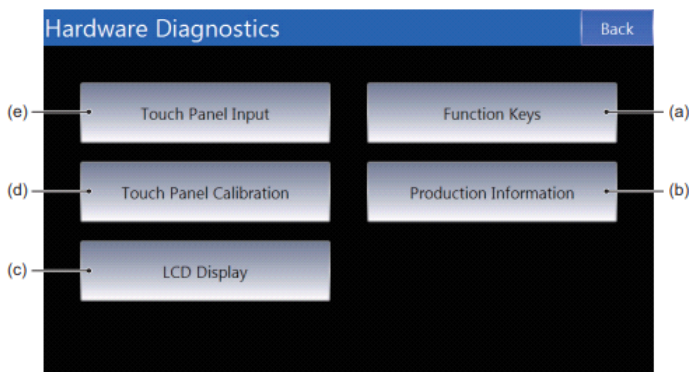
(b) Transfer to HMI

| No. | Item | Description |
|-----|-----------------|---|
| (a) | Data Type | Sets the file type. Only files with the specified file type are displayed at (c). |
| (b) | Transfer to HMI | Downloads the data. |
| (c) | Current Folder | Displays the files and folders in the currently open folder. |
| (d) | Path | Displays the path of the folder displayed at (c). |
| (e) | Media | Sets the media that contains the data to download. |

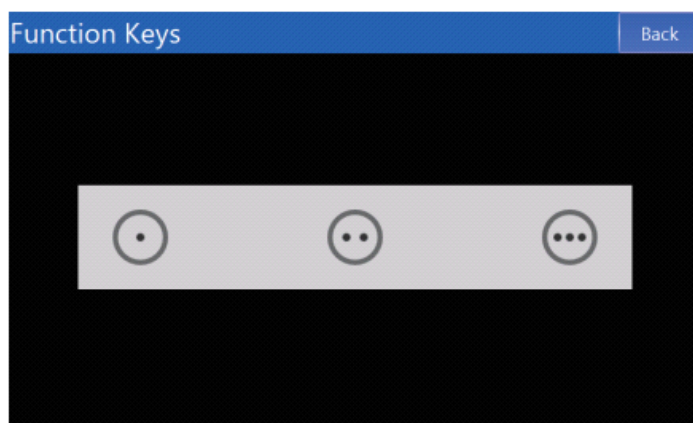


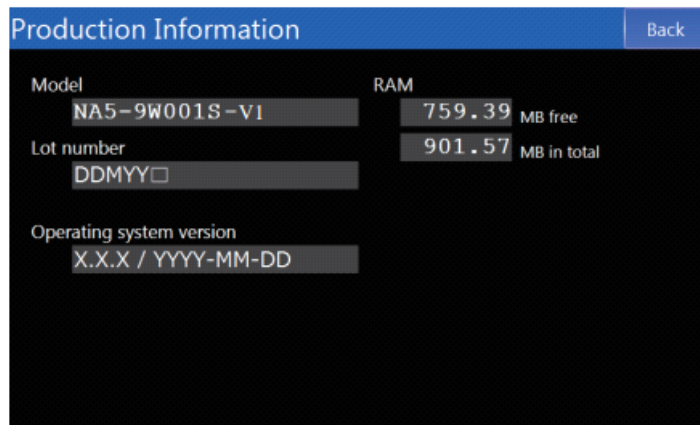
| No. | Item | Description |
|-----|--------------------|---|
| (a) | Media | Sets the media to which to upload the data. |
| (b) | Path | Displays the path of the folder displayed at (c). |
| (c) | Destination Folder | Displays the files and folders in the currently open destination folder. |
| (d) | File Name | Sets the name of the file at the destination. |
| (e) | Transfer from HMI | Uploads the data. |
| (f) | Target Files | Displays a list of the files that you can upload. |
| (g) | Data Type | Sets the file type. Only files with the specified file type are displayed at (c) and (f). |

■ Hardware Diagnostics: You can calibrate the touch panel, etc.

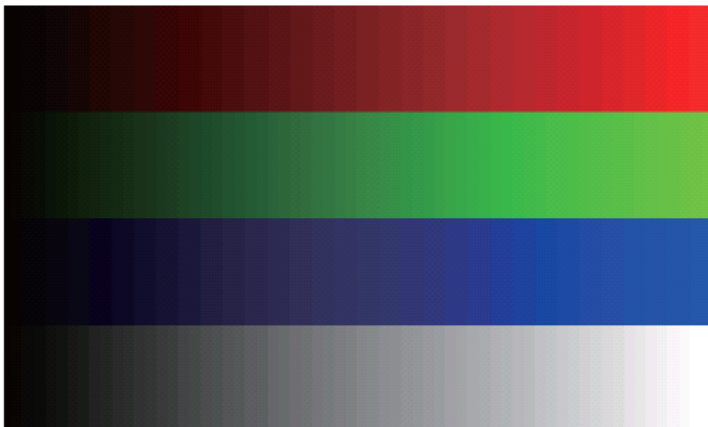


| No. | Item | Description |
|-----|-------------------------|---|
| (a) | Function Keys | Checks the operation of the function keys. |
| (b) | Production Information | Displays product information. |
| (c) | LCD Display | Displays a color bar to use to check the LCD. |
| (d) | Touch Panel Calibration | Calibrates the touch panel. |
| (e) | Touch Panel Input | Checks touch panel inputs. |

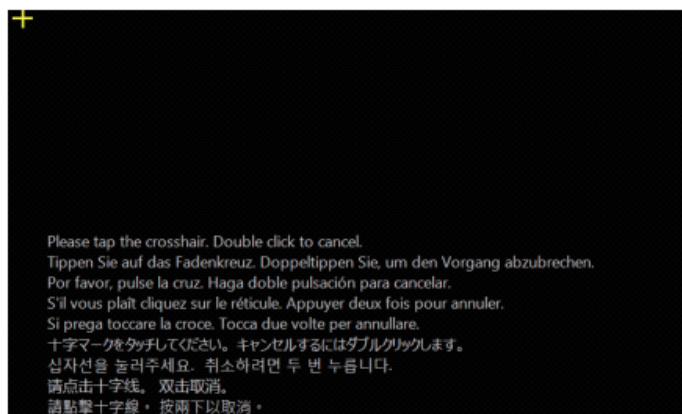




LCD Display (to check the LCD)

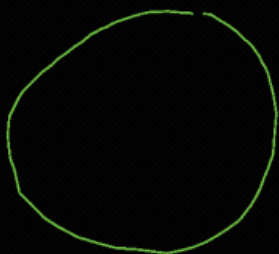


Touch Panel Calibration: Tap the plus signs displayed to execute calibration. Double-tap any position on the screen to cancel.



Touch Panel Input: The locations that are touched are displayed as dots.

Double touch the screen to exit.



■ Production Information: This screen displays the lot number of the NA Unit, etc.

| Production Information | | Back |
|--------------------------|--------------------|--------------------|
| Model | NA5-9W001S-V1 | RAM |
| | | 759.39 MB free |
| Lot number | DDMMYY□ | 901.57 MB in total |
| Operating system version | X.X.X / YYYY-MM-DD | |