

Downloading an NJ/NX Project

Steps

This section describes how to download (write) data to the PLC.

- ① Go online with the PLC.
- ② Display the project transfer dialog box.
- ③ Download the project from the PC to the Controller.

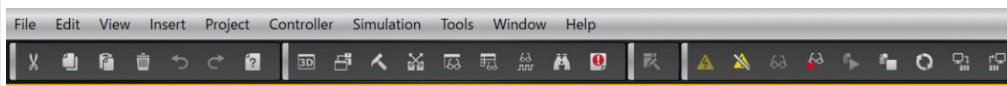
Detailed Steps

① Go online with the PLC.

Click the icon shown in the red frame below to go online.



When the online connection is successful, a yellow bar appears below the menu bar.



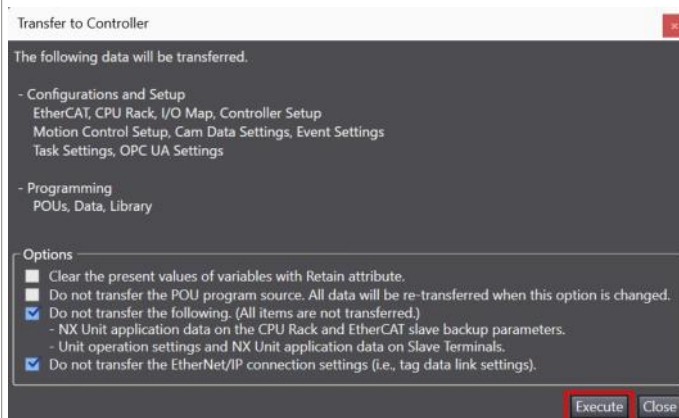
② Display the project transfer dialog box.

Click the icon shown in the red frame (Transfer to Controller) below to display the transfer dialog box.



③ Download the project.

• Confirm that appropriate check boxes are selected in the Options area and click the [Execute] button.



The meanings of the check boxes are as follows.

☐ Clear the present values of variables with Retain attribute (Valid for Transfer to Controller).

Default: Not selected

If this check box is selected, the present values of Retain variables are cleared after executing Transfer to Controller.

☐ Do not transfer the POU program source (Valid for Transfer to Controller). All data will be re-transferred when this option is changed.

Default: Not selected

If this check box is selected, programs are not transferred even when Transfer to Controller is executed.

* After this check box is selected, programs are not displayed when they are uploaded from another computer. However, variables and settings are transferred even if this check box is selected.

* When this check box is changed from Selected to Not selected without transferring the program source to the Controller, all data is transferred.

☐ Do not transfer the following. (All items are not transferred.)

• NX Unit application data on the CPU Rack and CJ-series Special Unit parameters and EtherCAT slave backup parameters.

• Unit operation settings and NX Unit application data on Slave Terminals.

Default: Selected

If this check box is selected, the following parameters and data are not transferred.

They are not transferred in either direction: Transfer to Controller and Transfer from Controller.

• CJ-series Special Unit (only NJ) and EtherCAT slave parameters

• Unit operation settings and application data for NX Units

* Parameters of ZW-series and FH-series are not transferred regardless of whether the check box is selected or not.

☐ Do not transfer the EtherNet/IP connection settings (i.e., tag data link settings).

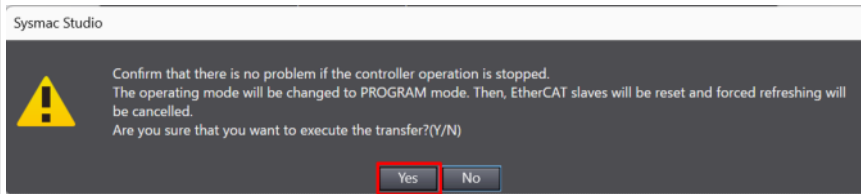
Default: Selected

If this check box is selected, the EtherNet/IP connection settings are not transferred.

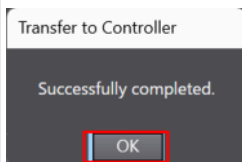
They are not transferred in either direction: Transfer to Controller and Transfer from Controller.

If you use the Network Configurator to configure the connection settings instead of the Sysmac Studio, use with this check box selected.

• A dialog box appears. Check the message and select the [Yes] button.



• A dialog box appears when the transfer is complete.



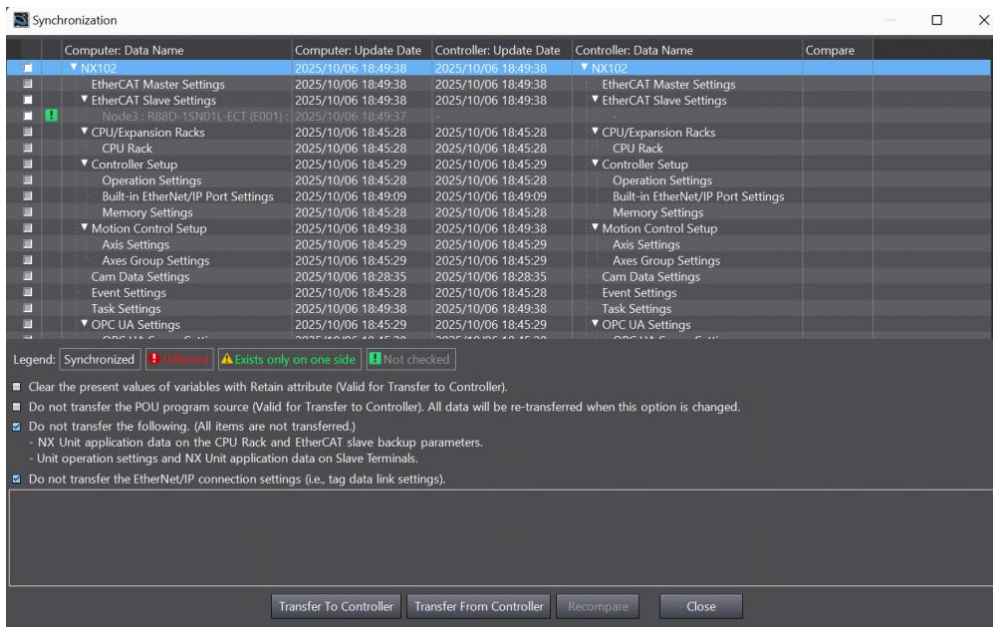
Remarks

You can also download data from the PC to the PLC using the Synchronization Window in the Sysmac Studio.

• Go online with the PLC, then click the icon shown in the red frame below.



• The synchronization with the PLC is executed.



• Click the [Transfer To Controller] button and download the project.