

Function Description: Acquiring Diagnostic and Statistical Information

Steps

This section describes how to obtain information for the diagnosis of the EtherCAT network status.

* The logs that can be obtained from the diagnostic and statistical information are limited to those since the most recent power ON. Please obtain the logs before turning off the power when an error occurs.

- ① Go online with the NJ/NX Controller.
- ② Open [Configurations and Setup] - [EtherCAT] in the Multiview Explorer.
- ③ Select the Master, right-click on it, and select [Display Diagnosis/Statistics Information].
- ④ Select the [Output File] button and save the file.

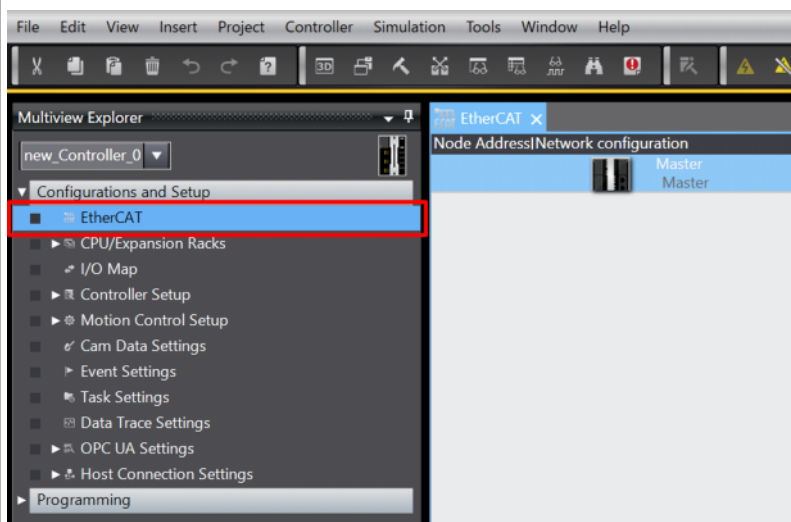
Detailed Steps

- ① **Go online with the NJ/NX Controller.**

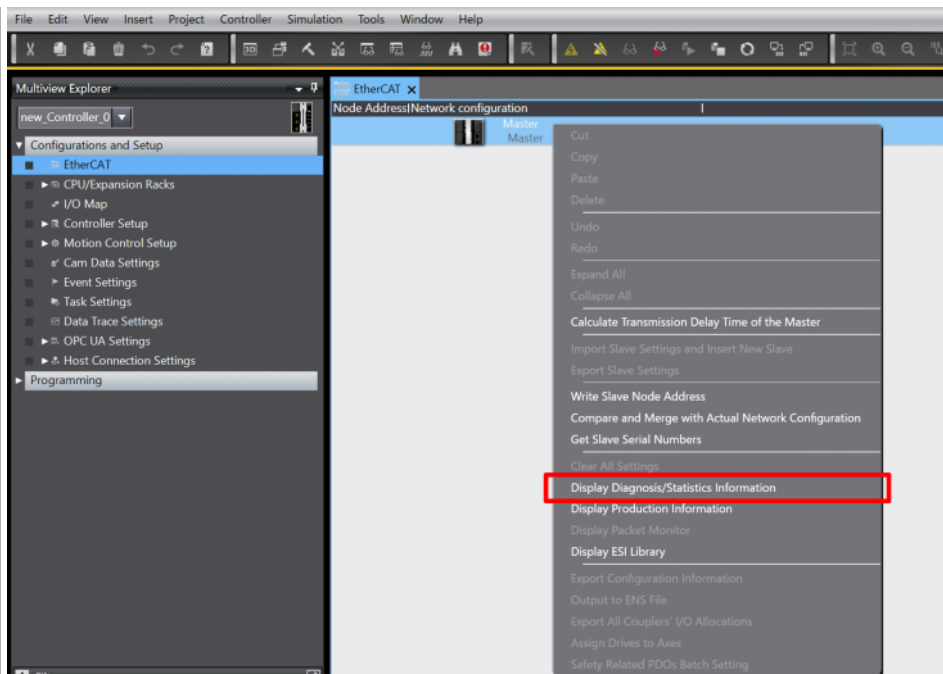
Refer to “[Going Online with an NJ/NX Controller](#)” for the instructions to go online.

- ② **Open [Configurations and Setup] - [EtherCAT] in the Multiview Explorer.**

Double-click [EtherCAT] to display the EtherCAT Tab Page.



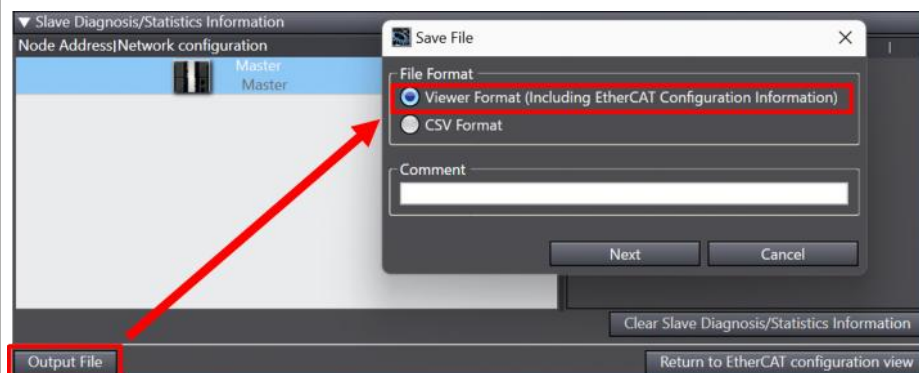
- ③ **Right-click on the Maser and select [Display Diagnosis/Statistics Information].**



④ Select the [Output File] button and save the file.

Select the file format, press the [Next] button, and save the file with a name.

Saving in the viewer format is recommended since EtherCAT configuration can also be checked at the same time.



Remarks