

Function Description: Program Comparison Function (Offline and Online)

Steps

This section describes how to compare program data (project) within the Sysmac Studio with other program data (Offline) and how to compare the program data of the controller with the data on Sysmac Studio (Online).

■ Offline Comparison

- ① Open the project to compare on the Sysmac Studio.
- ② Select another project from the [Offline Comparison] and compare.

■ Online Comparison

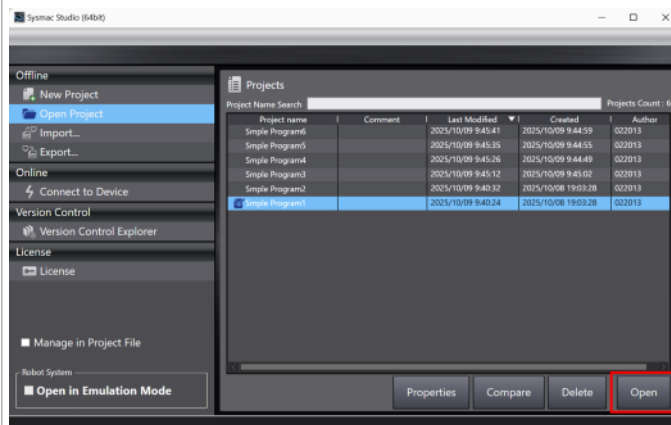
- ① Go online with the PLC.
- ② Compare in the [Synchronization].

Detailed Steps

■ Offline Comparison

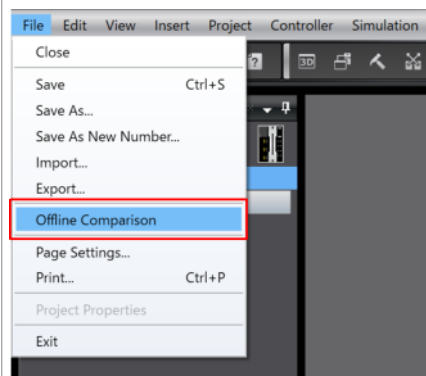
① Open the project to compare on the Sysmac Studio.

Select the source project in the Project field and open it.

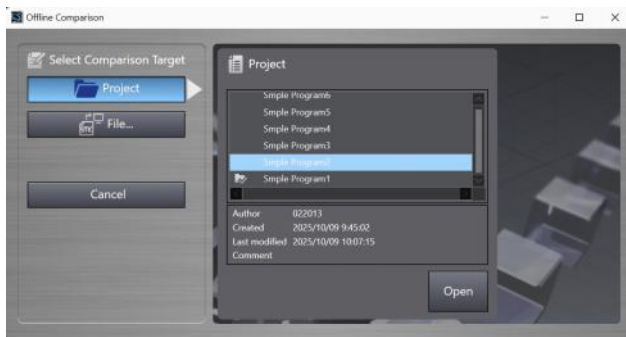


② Select another project from the [Offline Comparison] and compare.

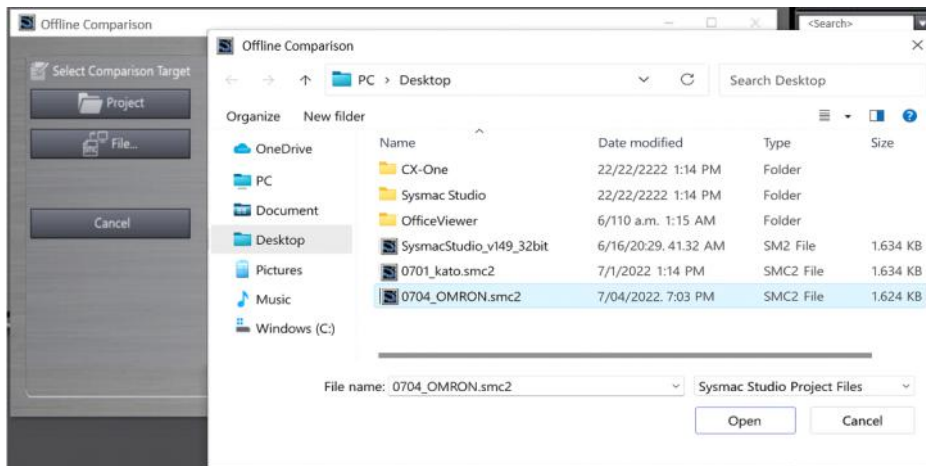
Click [File] - [Offline Comparison] from the menu bar.



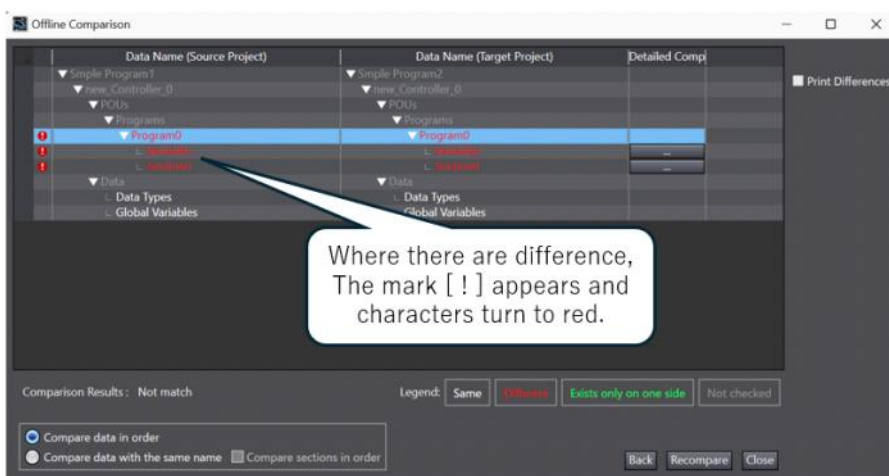
Click the [Project] button in the [Select Comparison Target] section and select the project you want to compare with from the list.



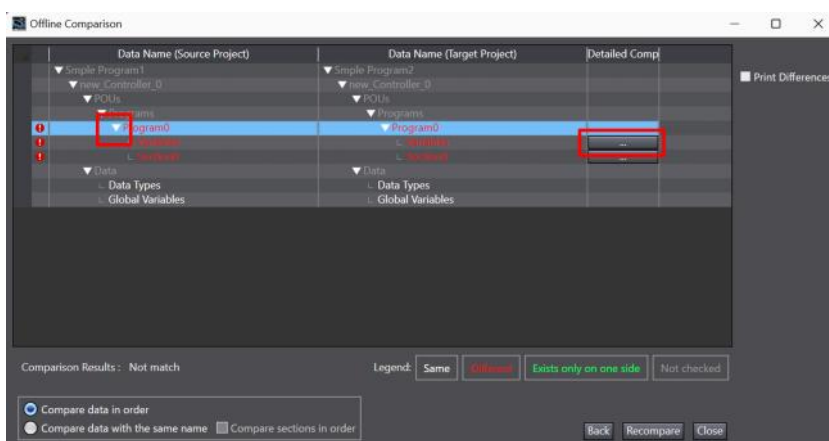
If the project is not on the Sysmac Studio, select the [File] button and select the project file on your PC, then click the [Open] button.



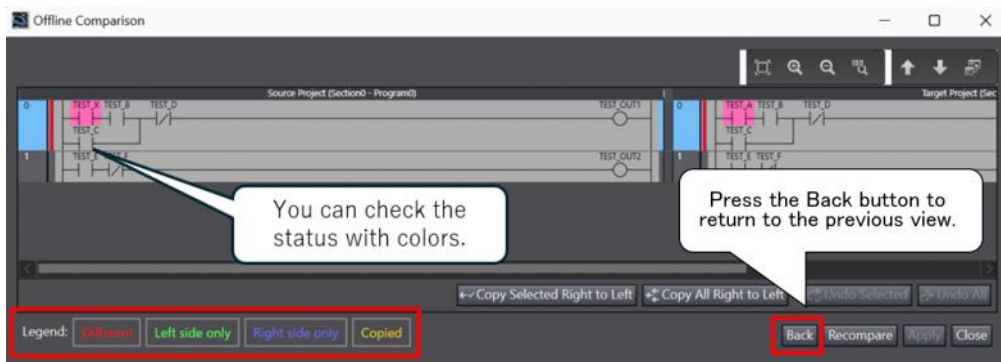
The results of the comparison are displayed.



Click the [!] mark next to the line displayed in red to expand it, then a button appears in the [Detailed Comparison] column.



Click the button in the [Detailed Comparison] to display the detailed differences.



■ Online Comparison

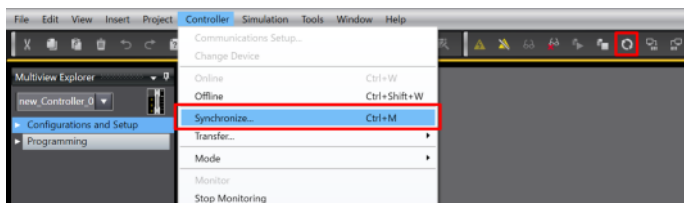
① Go online with the PLC.

Refer to the link below for the instructions to go online.

[Going Online with an NJ/NX Controller](#)

② Compare in the [Synchronization].

Click [Controller] - [Synchronize] from the menu bar or the [Synchronization] button in the toolbar.



The same screen as the offline comparison results will be displayed.
You can check the results using the same steps as above.

Remarks