

Function Description: Search and Replace

Steps

This function is used to search for data such as variables and function blocks in the program, and to replace names. The function can be used for the following data shown in the table below.

Variable tables	Ladder diagrams	ST
Variable names	Rung comments	Text strings
Variable comments	Variable names	Variable names
	Function names	Function names
	Function block definition names	Function block instance names
	Function block instance names	
	Element comments	
	Variable comments	

① Open the Search and Replace Pane.

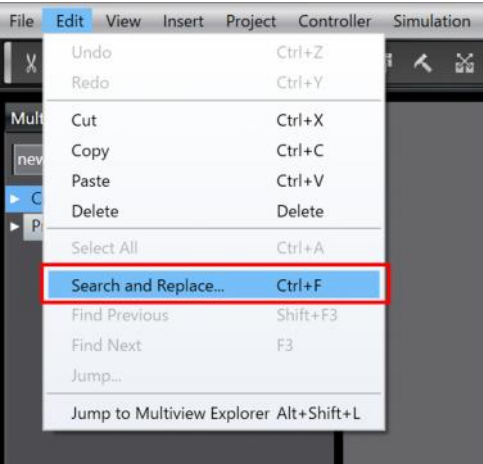
② Set the content you want to search and replace.

③ Execute the search and replace.

Detailed Steps

① Open the Search and Replace Pane.

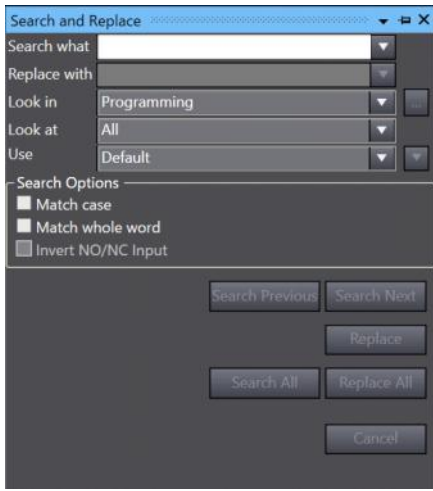
Select [Edit] - [Search and Replace] from the menu. The Search and Replace Pane is displayed where the Toolbox is (the rightmost window).



The screenshot shows the 'Edit' menu of a software application. The menu items are: Undo (Ctrl+Z), Redo (Ctrl+Y), Cut (Ctrl+X), Copy (Ctrl+C), Paste (Ctrl+V), Delete, Select All (Ctrl+A), Search and Replace... (Ctrl+F), Find Previous (Shift+F3), Find Next (F3), Jump..., and Jump to Multiview Explorer (Alt+Shift+L). The 'Search and Replace...' option is highlighted with a red rectangle.

② Set the content you want to search and replace.

Enter and set the items in the Search and Replace Pane.

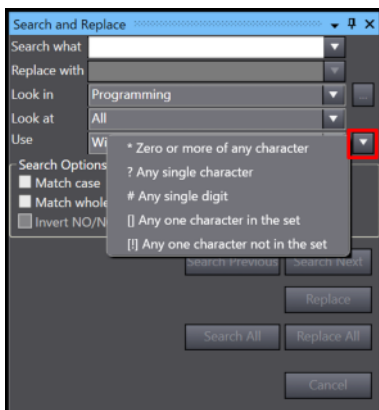


Search what/ Replace with: Enter a string. If you want to replace a string, enter the string to replace with in the “Replace with” field.

Look in: Select the range to search (Entire program / Checked elements (*1) / Current view (currently open view) / Selection: Range such as ladder program circuits or ST text lines)

Look at: All (all text strings except variable comments on ladder) / Variable name / Instructions (including program inputs and outputs) / Variable comment on ladder

Use: Default / Wildcard (Press the [▼] button shown in the red circle to select the wildcard character)



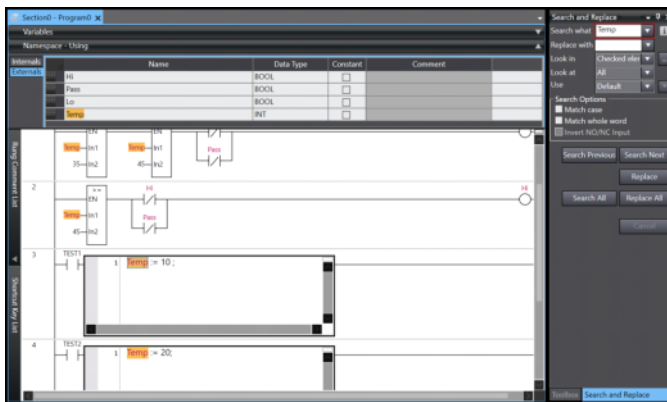
*1. The Select search and replace scope dialog box is displayed when you press the [...] button shown on the right of the “Look in” box. Select the check boxes for the items to search.



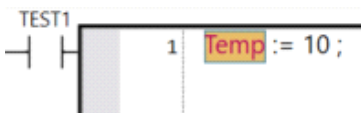
③ Execute the search and replace.

■ Search

When you press the [Search Next] button, the part where the string you entered in the search field is located is displayed. The searched string is highlighted in pale orange color.



If there are multiple candidates within the same screen, a frame is displayed around the selected string among the search results.

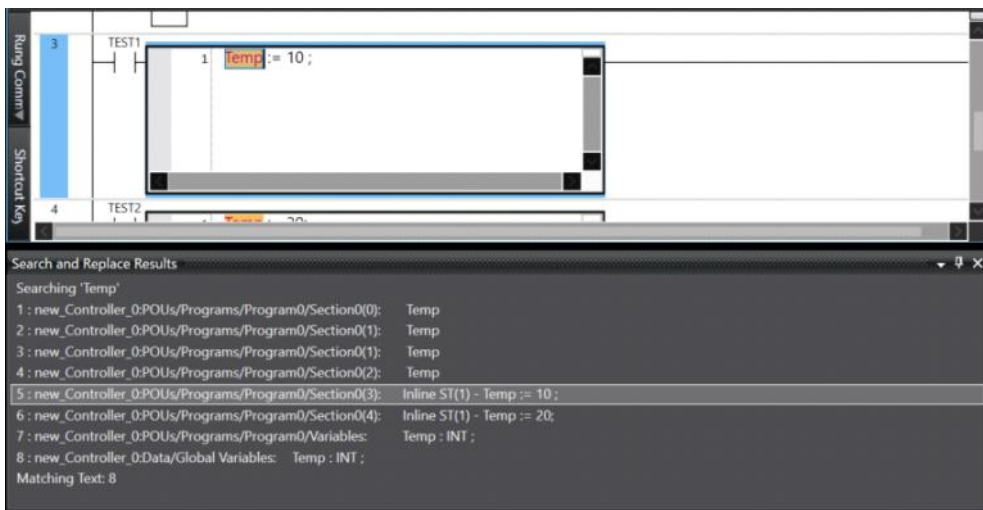


If you want to see another location, press the [Search Previous] or [Search Next] button.

■ Search All

When you press the [Search All] button, the locations where the search item was found are displayed in a list in the Search and Replace Results Tab Page.

When you double-click each line in the Search and Replace Results Tab Page, the target location is displayed in the main window.

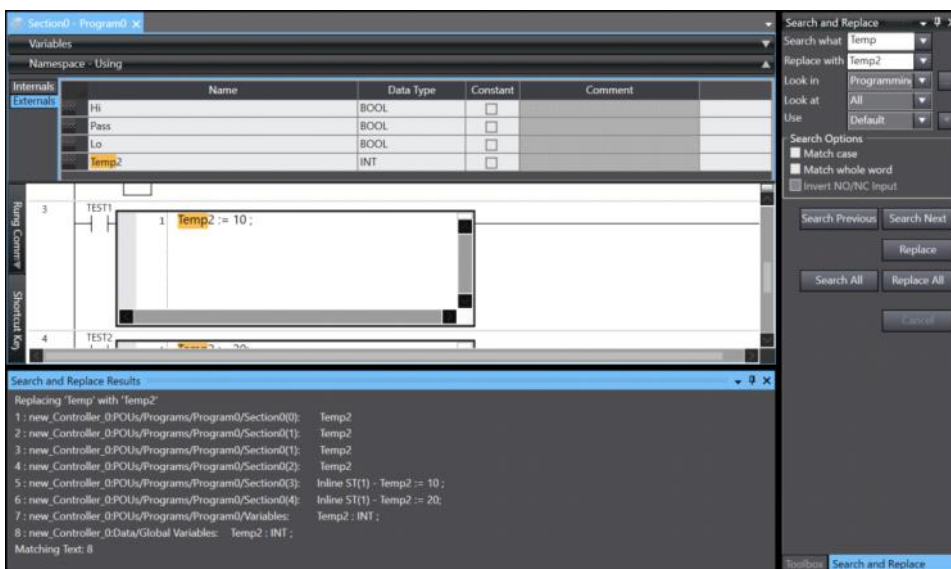


■ Replace/Replace All

After searching, when you find a location where you want to change the string, enter the string in the “Replace with” field and press the [Replace] button, then the string of the target item is replaced.

If you want to replace all strings at once, click the [Replace All] button to replace them.

Example: Replace Temp with Temp2



Remarks