

Function Description: Watch Tab Page

Steps

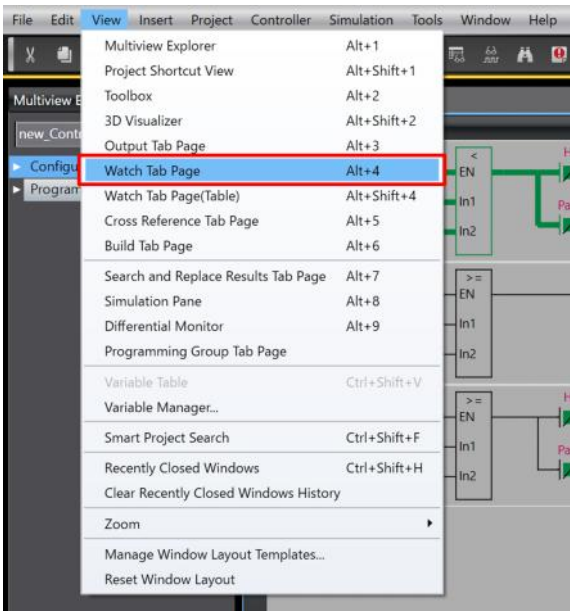
This function is used to check or change the value of variables in online status.

- ① Open the Watch Tab Page.
- ② Enter the variable name to be monitored in the “Name” column.
- ③ Check for the current value or change the variable value.

Detailed Steps

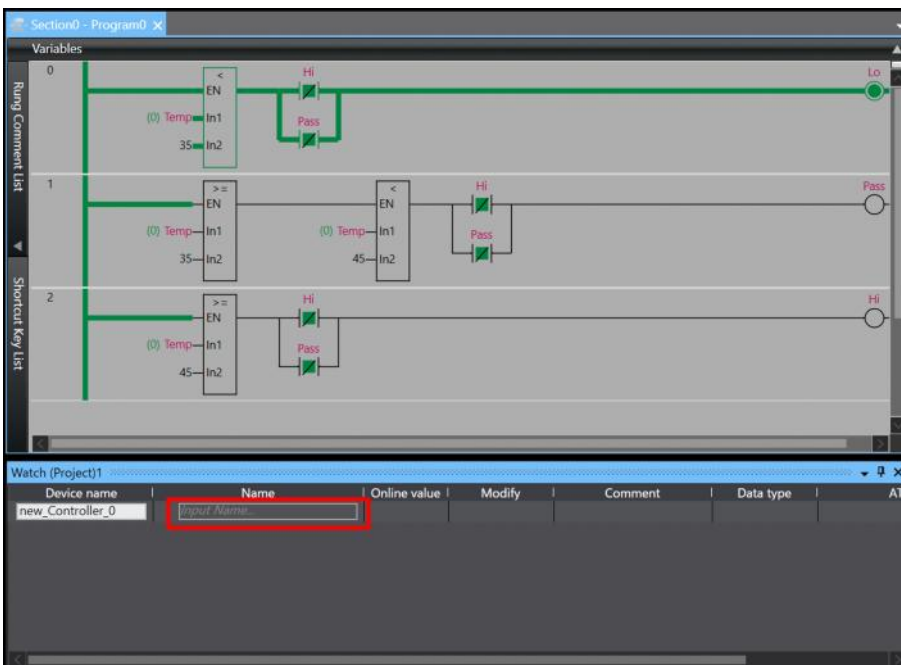
① Open the Watch Tab Page.

Click [View] - [Watch Tab Page] from the menu bar (or you can also use the keyboard shortcut Alt+4).



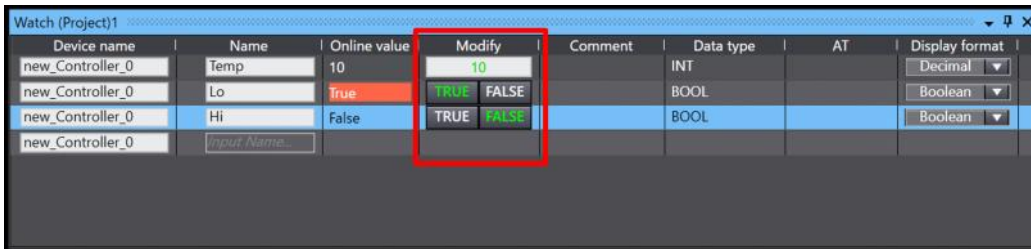
② Enter the variable name to be monitored in the “Name” column.

Enter the name of the variable you want to monitor in the “Name” column of the Watch Tab Page that is displayed.



③ Check for the current value or change the variable value.

The current value is displayed in the “Online value” column. You can forcibly change the variable value or TRUE/FALSE for Boolean variable in the “Modify” column.



Device name	Name	Online value	Modify	Comment	Data type	AT	Display format
new_Controller_0	Temp	10	10		INT		Decimal
new_Controller_0	Lo	True	TRUE FALSE		BOOL		Boolean
new_Controller_0	Hi	False	TRUE FALSE		BOOL		Boolean
new_Controller_0	Input Name...						

Remarks

Variable name input rules: Examples of various formats when using the variable “Hoge” in the program “Program1”.

- Global variable: Hoge
- Local variable: Program1.Hoge
- Array (2nd element): Hoge[1]
- Array (100 elements): Hoge[0-99] or Hoge[0..99]
- Structure (STRUCT): STRUCT.Hoge
- Union (UNION): UNION.Hoge

NJ/NX-series CPU Unit Software User's Manual (Cat. No. W501)

6-3-11 Monitoring Variable Values

7-3-3 Checking I/O Wiring

Sysmac Studio Version 1 Operation Manual (Cat. No. W504)

7-2-3 Changing Present Values and Set/Reset Using Forced Refreshing