

Going Online with an NJ/NX Controller

Steps

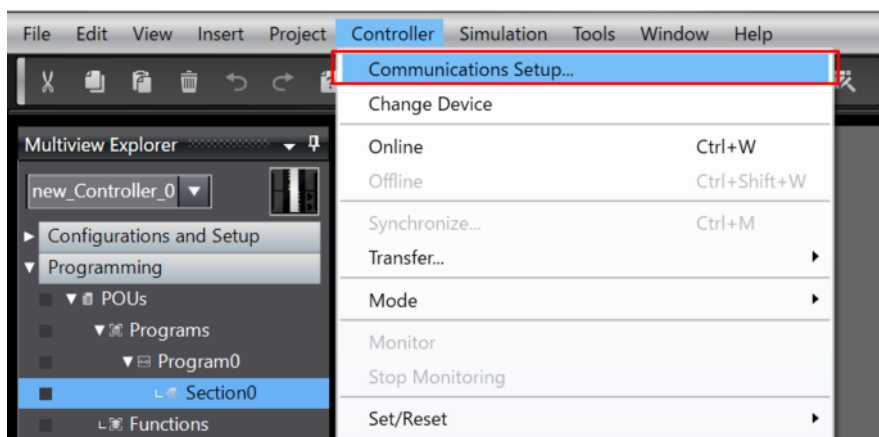
This section describes how to connect online with a PLC.

- ① Open the Communications Setup Dialog Box.
- ② Configure the communications settings according to the connection type.
- ③ Go online.

Detailed Steps

① Open the Communications Setup Dialog Box.

Click [Controller] - [Communications Setup] from the menu bar.

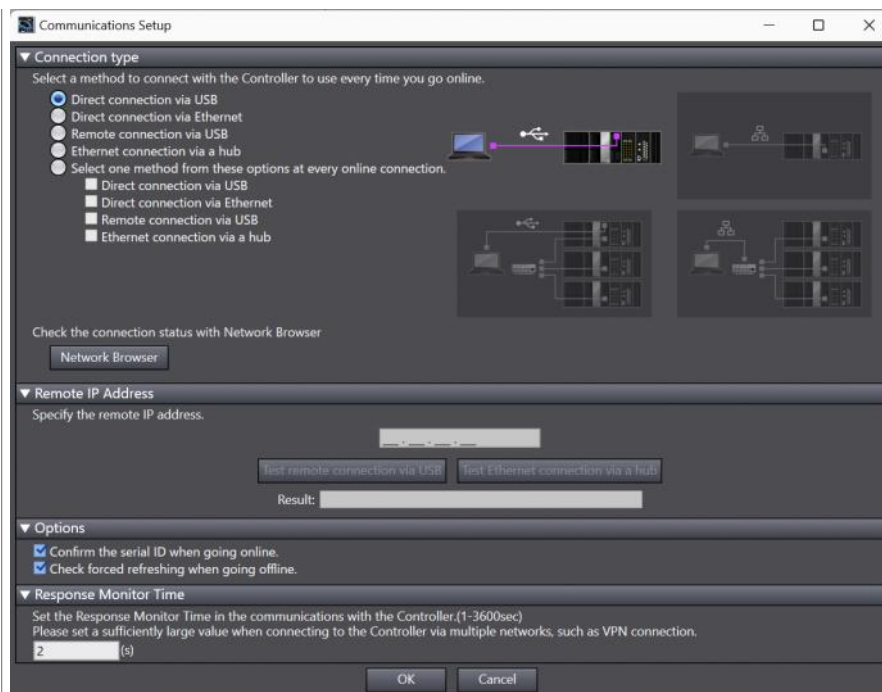


② Configure the communications settings according to the connection type.

Please select from the following connection types:

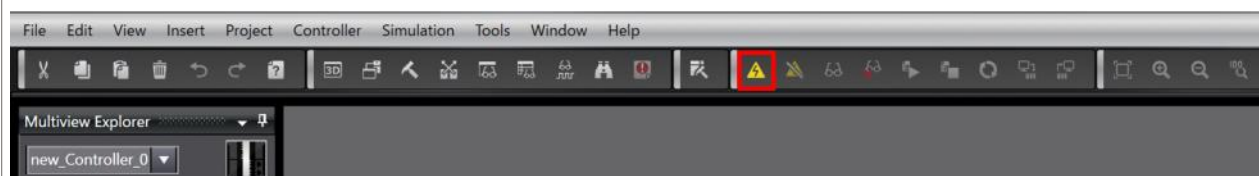
- Direct connection via USB
- Remote connection via USB
- Direct connection via Ethernet: Specifying the IP address is not required
- Ethernet connection via a hub: Specifying the IP address is required (please also check the IP address of the PC)

When using "Ethernet connection via a hub" or "Remote connection via USB" connection type, you can check communications by clicking the appropriate [Test] button.



③ Go online.

You can go online by clicking the icon shown in the red frame below.



Remarks