

Transferring Changes Made During Online Editing

Steps

This function is used to edit circuits in online status.

- ① Go online with the PLC.
- ② Open the program to edit on the window.
- ③ Start online editing.
- ④ Change the circuits.
- ⑤ Transfer the changes.

Detailed Steps

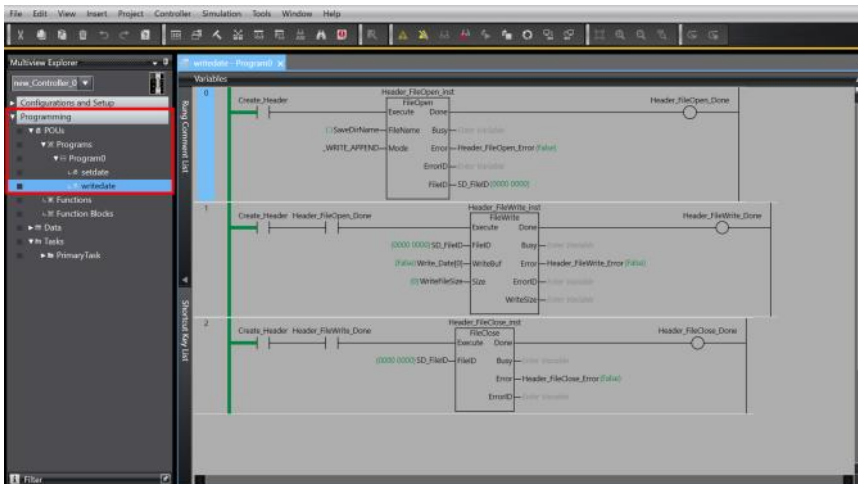
① Go online with the PLC.

Refer to the link below for the instructions to go online.

[Going Online with an NJ/NX Controller](#)

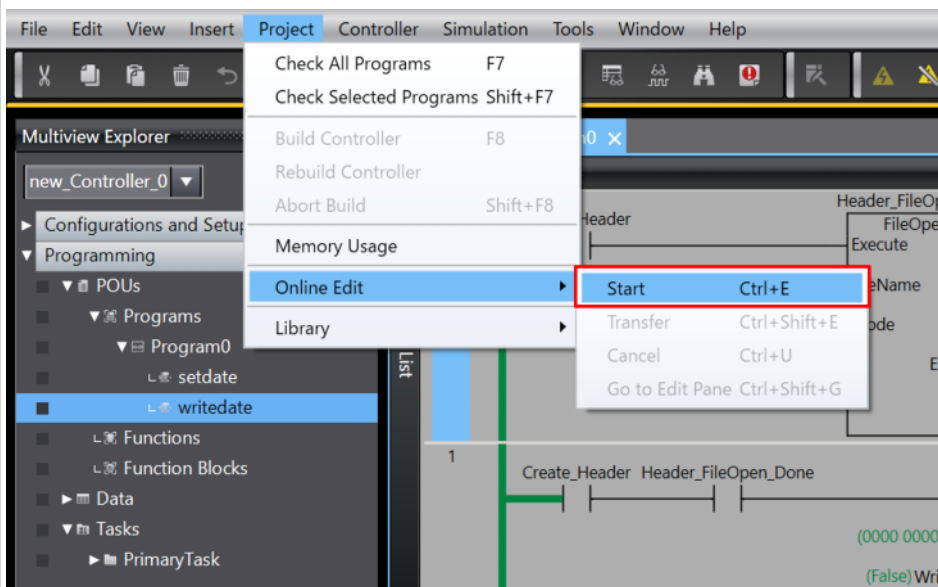
② Open the program to edit on the window.

Open the circuit page to add modification.



③ Start online editing.

Press "Ctrl+E" or select [Project] - [Online Edit] - [Start] from the menu to start online editing.



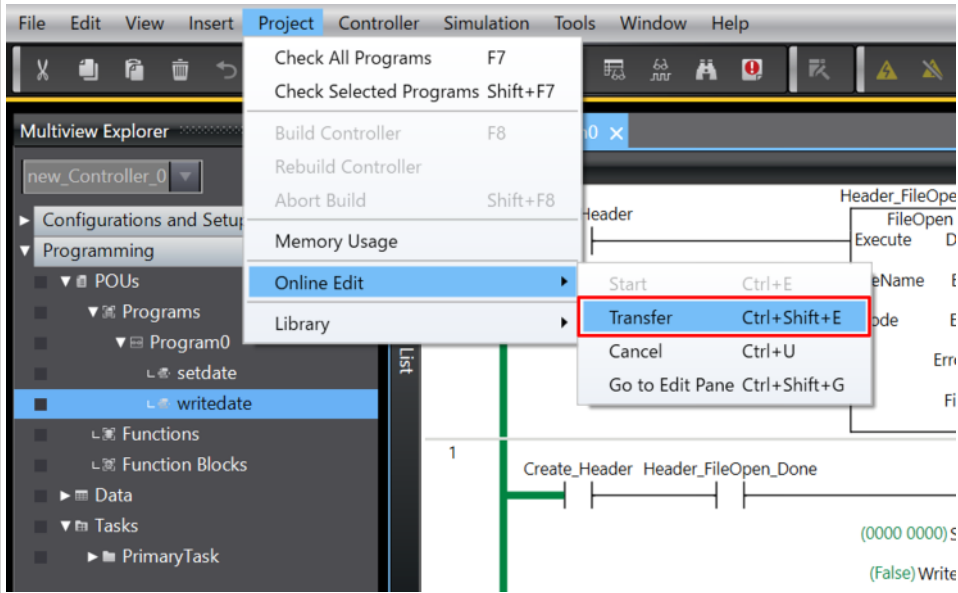
④ Change the circuits.

Change the circuits.

*If there are no changes to be made and you want to cancel online editing, press "Ctrl+U" to cancel online editing.

⑤ Transfer the changes.

Press "Ctrl+Shift+E" or select [Project] - [Online Edit] - [Transfer] from the menu to transfer the changes.



Remarks

If you want to add global variables in online editing, the following steps are required.

① Open the global variable table.

② Start online editing.

* If you have already started online editing on another page, you need to end it first.

③ Add global variables.

④ Transfer the changes