

# Uploading 1S/G5 Parameters

## Steps

This section describes how to upload (read) parameters from the 1S/G5 Servo Drives.

- ① Go online with the Controller to which the Servo Drive is connected.
- ② Open the Parameter Tab Page.
- ③ Upload the parameters.

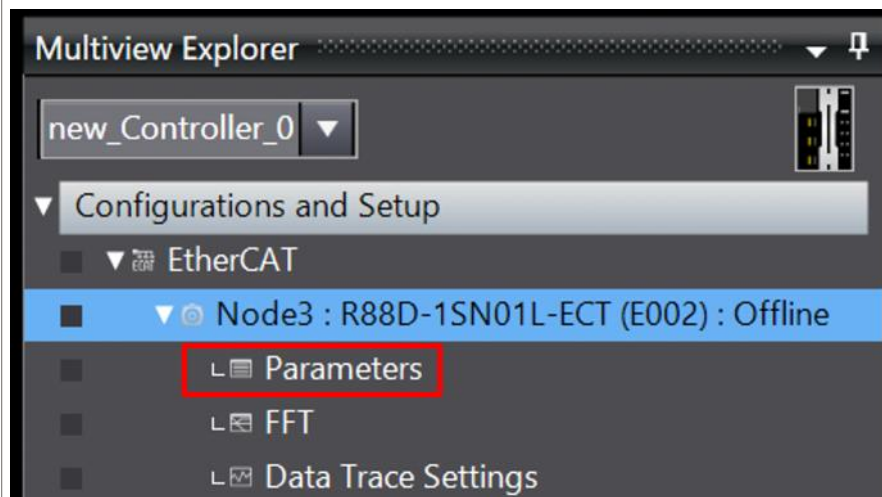
## Detailed Steps

- ① **Go online with the Controller to which the Servo Drive is connected.**

Go online with the Controller by referring to “[Going Online with an NJ/NX Controller](#)”.

- ② **Open the Parameter Tab Page.**

Select the Servo Drive from which you want to upload parameters from [Configurations and Setup] - [EtherCAT] in the Multiview Explorer, and double-click [Parameters].



- ③ **Upload the parameters.**

You can upload all parameters by clicking the button shown in the red frame below.

All parameters ▼

| OD          | Description   | Value  |
|-------------|---|--|
| 2200.00     | Communications Error Setting                          | 1  |
| 2201.00     | Sync Not Received Timeout Setting                     | 0  |
| 3000.01     | Basic Functions - Motor Rotation Direction Selec...   | 1 : A positive direction command sets the motor rotation   |
| 3000.03     | Basic Functions - Control Method Selection            | 0 : ODF control  |
| 3000.04     | Basic Functions - Function Settings                   | 1  |
| 3000.81(0)  | Basic Functions - Function Status - Origin Positio... | 0 : Outside origin range                                   |
| 3000.81(10) | Basic Functions - Function Status - Position Com...   | 0 : Position command not changed                           |
| 3000.81(1)  | Basic Functions - Function Status - Distribution...   | 0 : Distribution not completed                             |
| 3000.81(11) | Basic Functions - Function Status - Error Clear At... | 0 : No error or an error which must be reset by the restar |
| 3000.81(12) | Basic Functions - Function Status - Homing com...     | 0 : Homing non-completion state                            |
| 3000.81(2)  | Basic Functions - Function Status - Zero Speed...     | 1 : Zero speed detected                                    |

Help

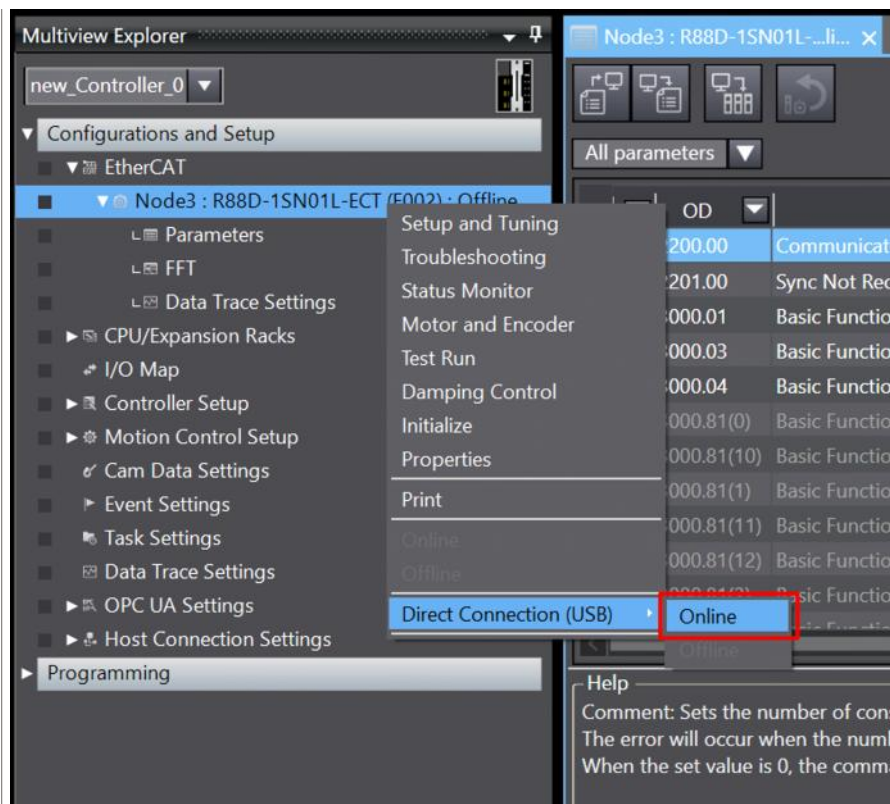
Comment: Sets the number of consecutive times to detect communications errors.  
The error will occur when the number of detection times is "this set value +1".  
When the set value is 0, the command compensation for communications errors is disabled.

\* If you only want to upload the parameters you have selected, select the button shown in the red frame below.



## Remarks

If you connect directly with a Servo Drive and a USB cable, select the Servo Drive you want to go online from [Configurations and Setup] - [EtherCAT] in the Multi-View Explorer, right-click on it, and select [Direct Connection (USB)] - [Online].



If you want to compare the parameters on the project with the parameters downloaded to the actual device, click the button shown in the red frame below.

