

# Uploading an NJ/NX Project (Existing Project)

## Steps

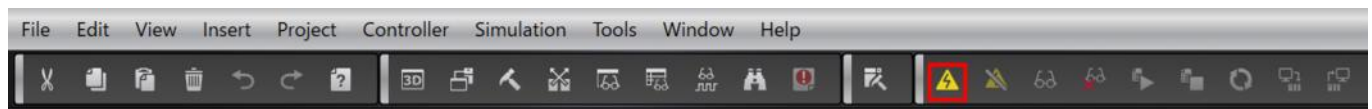
This section describes how to upload (read) data from the PLC.

- ① Go online with the PLC.
- ② Display the project transfer dialog box.
- ③ Upload the project from the Controller to the PC.

## Detailed Steps

### ① Go online with the PLC.

Click the icon shown in the red frame below to go online.

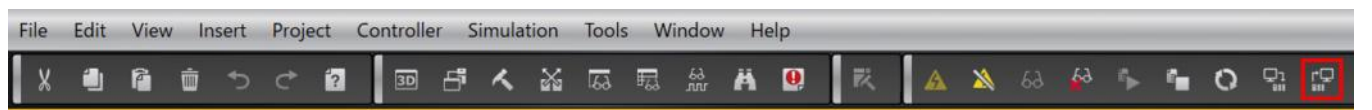


When the online connection is successful, a yellow bar appears below the menu bar.



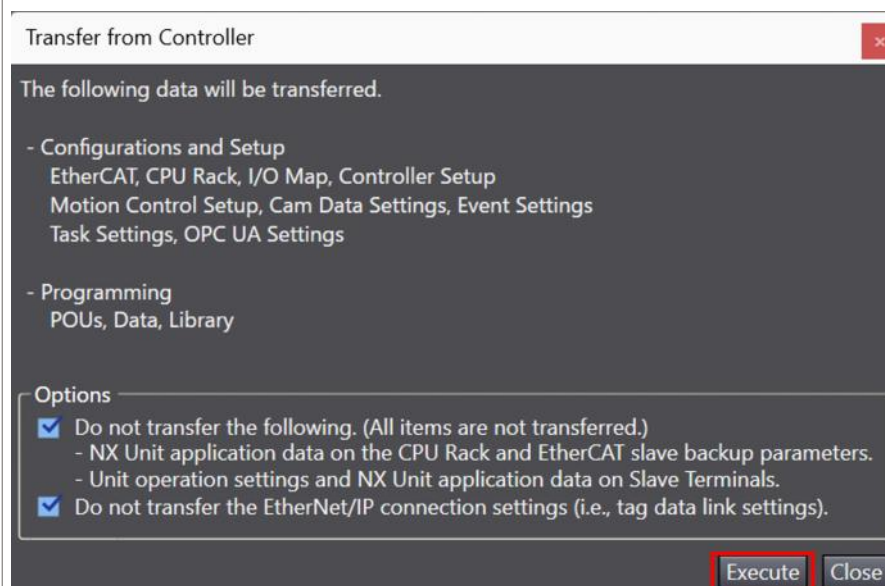
### ② Display the project transfer dialog box.

Click the icon shown in the red frame (Transfer from Controller) below to display the transfer dialog box.



### ③ Upload the project.

• Confirm that appropriate check boxes are selected in the Options area and click the [Execute] button.



The meanings of the check boxes are as follows. If you want to upload all data, clear all check boxes.

☐ Do not transfer the following. (All items are not transferred.)

- NX Unit application data on the CPU Rack and CJ-series Special Unit parameters and EtherCAT slave backup parameters.
- Unit operation settings and NX Unit application data on Slave Terminals.

Default: Selected

If this check box is selected, the following parameters and data are not transferred.

They are not transferred in either direction: Transfer to Controller and Transfer from Controller.

- CJ-series Special Unit (only NJ) and EtherCAT slave parameters
- Unit operation settings and application data for NX Units

\* Parameters of ZW-series and FH-series are not transferred regardless of whether the check box is selected or not.

☐ Do not transfer the EtherNet/IP connection settings (i.e., tag data link settings).

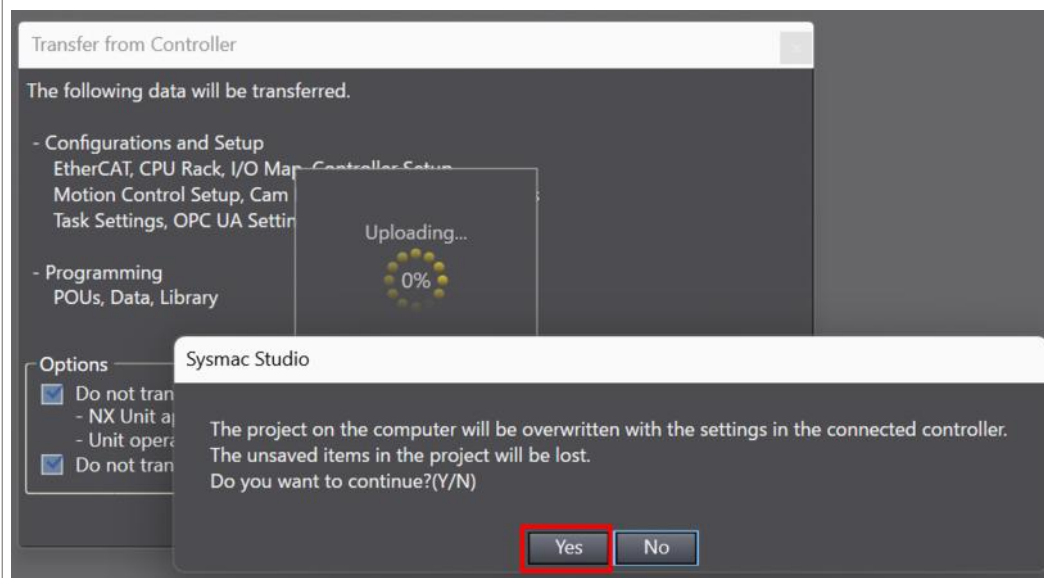
Default: Selected

If this check box is selected, the EtherNet/IP connection settings are not transferred.

They are not transferred in either direction: Transfer to Controller and Transfer from Controller.

If you use the Network Configurator to configure the connection settings instead of the Sysmac Studio, use with this check box selected.

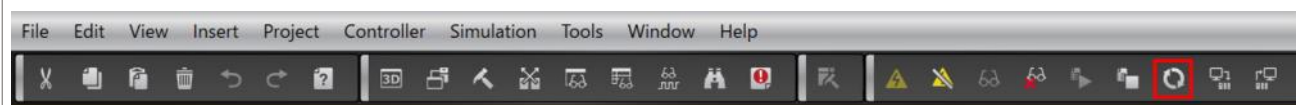
- A dialog box appears. Check the message and select the [Yes] button.



## Remarks

You can also upload data from the PLC to the PC using the Synchronization Window in the Sysmac Studio.

- Go online with the PLC, then click the icon shown in the red frame below.



- The synchronization with the PLC is executed.

Synchronization

	Computer: Data Name	Computer: Update Date	Controller: Update Date	Controller: Data Name	Compare	
▼	NX102	2025/10/06 18:49:38	2025/10/06 18:49:38	▼ NX102		
■	EtherCAT Master Settings	2025/10/06 18:49:38	2025/10/06 18:49:38	EtherCAT Master Settings		
■	▼ EtherCAT Slave Settings	2025/10/06 18:49:38	2025/10/06 18:49:38	▼ EtherCAT Slave Settings		
■	Node3 : R88D-1SN01L-ECT (E001)	2025/10/06 18:49:37	-	-		
■	▼ CPU/Expansion Racks	2025/10/06 18:45:28	2025/10/06 18:45:28	▼ CPU/Expansion Racks		
■	CPU Rack	2025/10/06 18:45:28	2025/10/06 18:45:28	CPU Rack		
■	▼ Controller Setup	2025/10/06 18:45:29	2025/10/06 18:45:29	▼ Controller Setup		
■	Operation Settings	2025/10/06 18:45:28	2025/10/06 18:45:28	Operation Settings		
■	Built-in EtherNet/IP Port Settings	2025/10/06 18:49:09	2025/10/06 18:49:09	Built-in EtherNet/IP Port Settings		
■	Memory Settings	2025/10/06 18:45:28	2025/10/06 18:45:28	Memory Settings		
■	▼ Motion Control Setup	2025/10/06 18:49:38	2025/10/06 18:49:38	▼ Motion Control Setup		
■	Axis Settings	2025/10/06 18:45:29	2025/10/06 18:45:29	Axis Settings		
■	Axis Group Settings	2025/10/06 18:45:29	2025/10/06 18:45:29	Axis Group Settings		
■	Cam Data Settings	2025/10/06 18:28:35	2025/10/06 18:28:35	Cam Data Settings		
■	Event Settings	2025/10/06 18:45:28	2025/10/06 18:45:28	Event Settings		
■	Task Settings	2025/10/06 18:49:38	2025/10/06 18:49:38	Task Settings		
■	▼ OPC UA Settings	2025/10/06 18:45:29	2025/10/06 18:45:29	▼ OPC UA Settings		
■	OPC UA Settings	2025/10/06 18:45:29	2025/10/06 18:45:29	OPC UA Settings		

Legend: Synchronized Different Exists only on one side Not checked

- Clear the present values of variables with Retain attribute (Valid for Transfer to Controller).
- Do not transfer the POU program source (Valid for Transfer to Controller). All data will be re-transferred when this option is changed.
- ☒ Do not transfer the following. (All items are not transferred.)
  - NX Unit application data on the CPU Rack and EtherCAT slave backup parameters.
  - Unit operation settings and NX Unit application data on Slave Terminals.
- ☒ Do not transfer the EtherNet/IP connection settings (i.e., tag data link settings).

Transfer To Controller Transfer From Controller Recompare Close

•Click the [Transfer From Controller] button and upload the project.