

Uploading an NJ/NX Project (New Project)

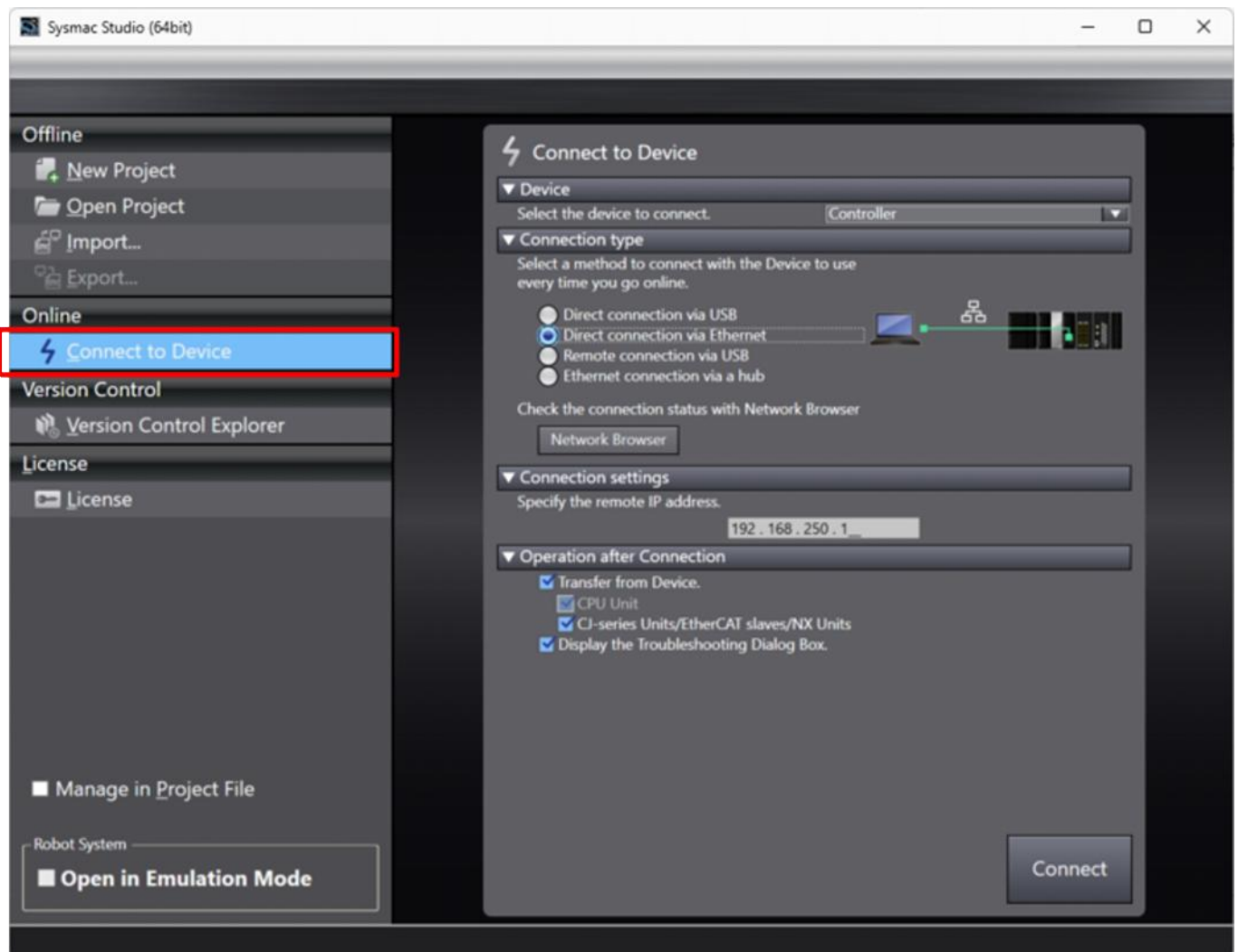
Steps

This section describes how to upload (read) data from the PLC.

- ① Start the Sysmac Studio and select [Connect to Device].
- ② Configure the communications settings according to the connection type.
- ③ Confirm that appropriate check boxes are selected under "Operation after Connection" and execute uploading.

Detailed Steps

- ① Start the Sysmac Studio and select [Connect to Device].



- ② Configure the communications settings according to the connection type.

- Device to connect: Controller
- Connection type: Select the setting according to the connection type
- Connection settings (* Only for Ethernet connection via a hub): Enter the IP address of the target Controller

- ③ Confirm that appropriate check boxes are selected under "Operation after Connection" and execute uploading.

Confirm that the check box of the device to upload data from is selected, and click [Connect].

Remarks
<p>You can also upload data from the PLC to the PC using the Synchronization Window in the Sysmac Studio.</p> <ul style="list-style-type: none">•Click the [Transfer From Controller] button and upload the project.