

Unit Replacement: 1S Servo Drive

Steps

This section describes how to replace the 1S-series Servo Drive.

- ① Upload the project.
- ② Check the Servo Drive parameters.
- ③ Turn OFF the power supply and replace the Servo Drive.
- ④ Check the Servo Drive revision.
- ⑤ Transfer the Servo Drive parameters
- ⑥ Open the [Motor and Encoder] Tab Page.
- ⑦ Open the [Encoder Properties] screen.
- ⑧ Execute [Clear system].
- ⑨ Execute [Reset Motor Replacement Detection error].

Detailed Steps

① Upload the project.

Go online with the Controller to which the Servo Drive is connected and upload the project.
Upload the project by referring to "[Uploading an NJ/NX Project \(New Project\)](#)".

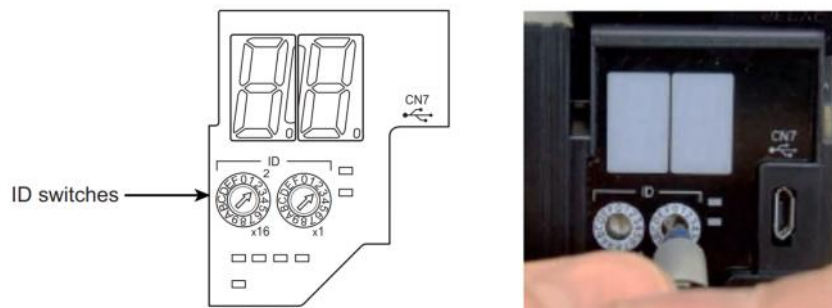
② Check the Servo Drive parameters.

Check if the Servo Drive parameters in the project data match the parameters of the connected Servo Drive by referring to "[Uploading 1S/G5 Parameters](#)".

If there is any difference, upload the parameters.

③ Turn OFF the power supply and replace the Servo Drive.

Turn OFF the power supply and replace the Servo Drive.
At this time, configure the EtherCAT node address settings.



Precautions for Correct Use

- Confirm that the charge lamp is not lit before you perform replacement of the Servo Drive.
- Usually, it takes at least 10 minutes to discharge electricity.
- The models with a regeneration resistor can discharge electricity in a short period of time when there is no error in its circuits and the main circuit power supply is cut off while the control power supply is ON.

④ Check the Servo Drive revision.

Turn ON the power supply, execute steps described in "[Comparing EtherCAT Configurations](#)" and confirm that the revisions of the Servo Drive before and after the replacement are the same.

If the comparison result is different, change the revision according to the steps in "[Changing Device Revisions](#)", and then download the project data to the Controller.

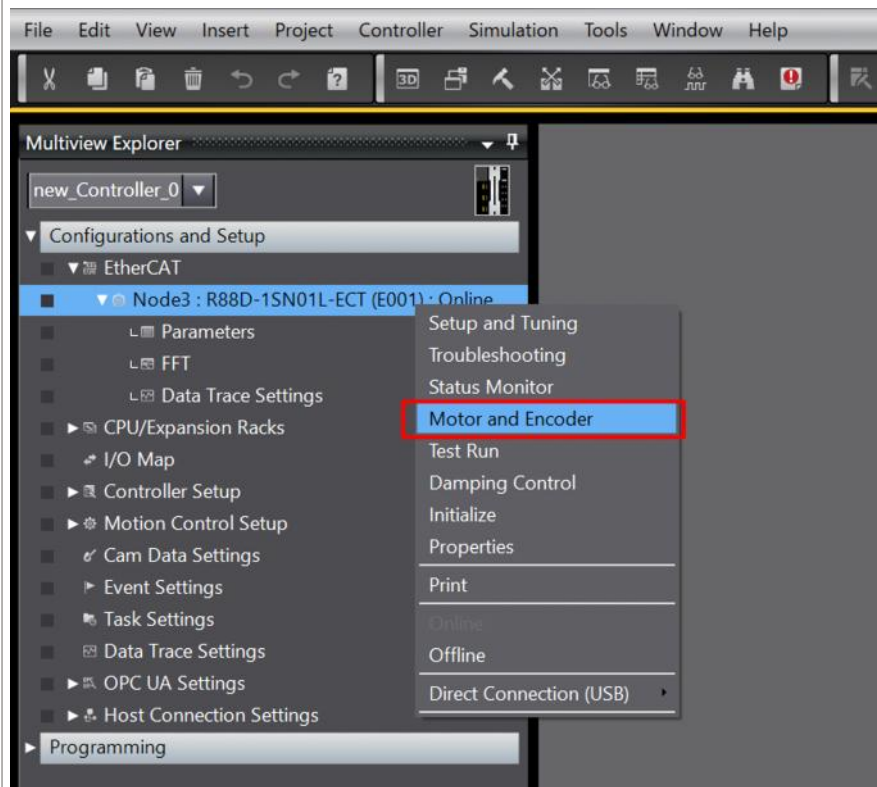
If you are unsure about how to download, refer to "[Downloading an NJ/NX Project](#)".

⑤ Transfer the Servo Drive parameters

Download the parameters to the replaced Servo Drive by referring to "[Downloading 1S/G5 Parameters](#)".

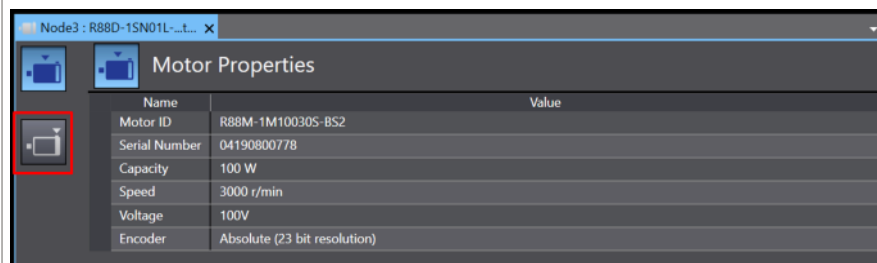
⑥ Open the [Motor and Encoder] Tab Page.

Right-click the replaced Servo Drive from [Configurations and Setup] - [EtherCAT] in the Multiview Explorer, and select [Motor and Encoder].



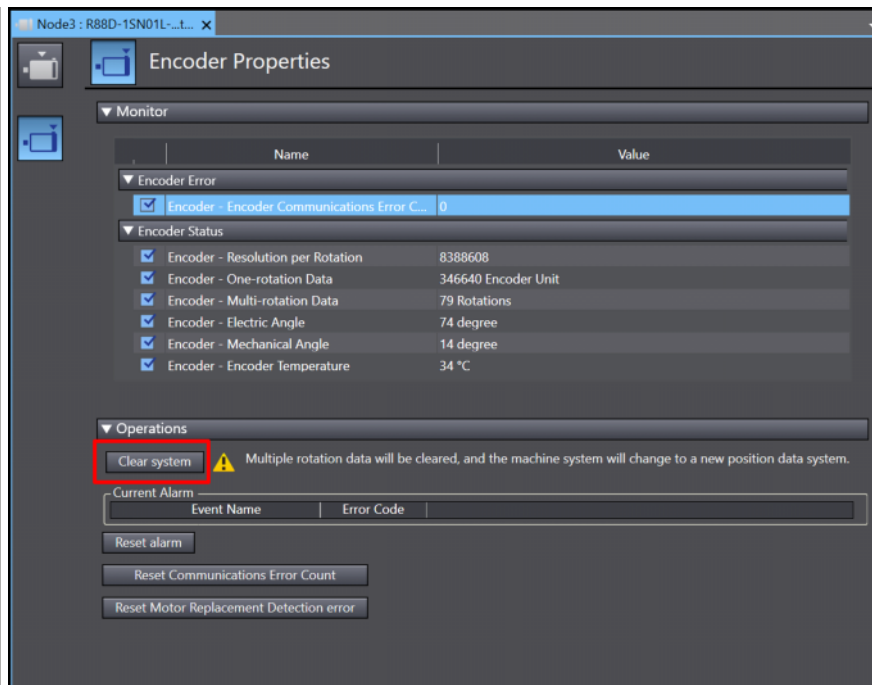
⑦ Open the [Encoder Properties] screen.

Click the button shown in the red frame in the figure below to open the [Encoder Properties] screen.

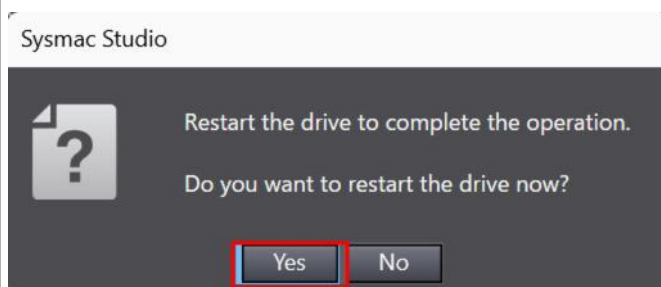


⑧ Execute [Clear system].

To clear the multiple rotation data, click the [Clear system] button.

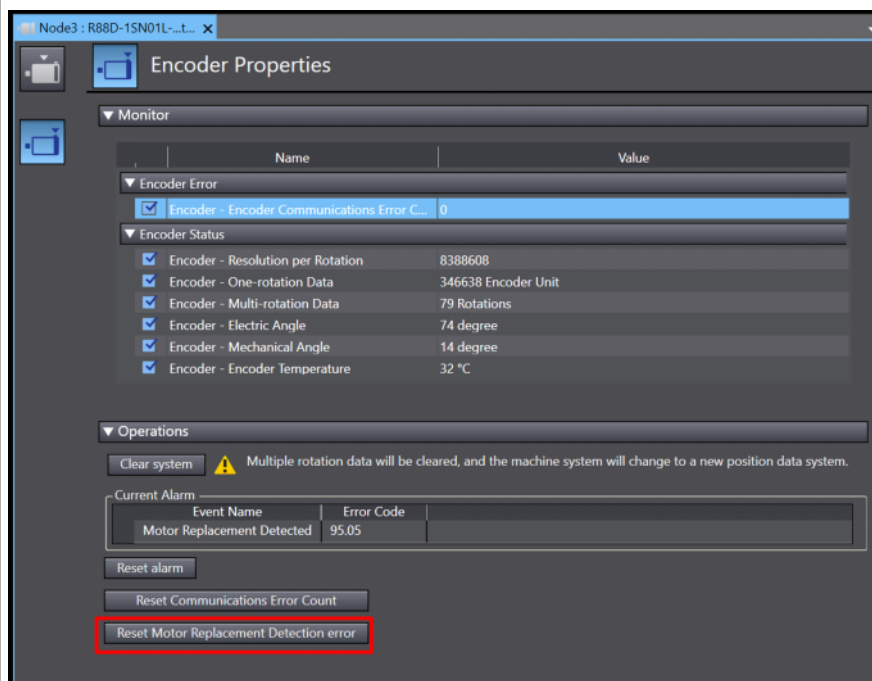


After executing the reset, a pop-up window as shown in the figure below will be displayed, so click the [Yes] button.

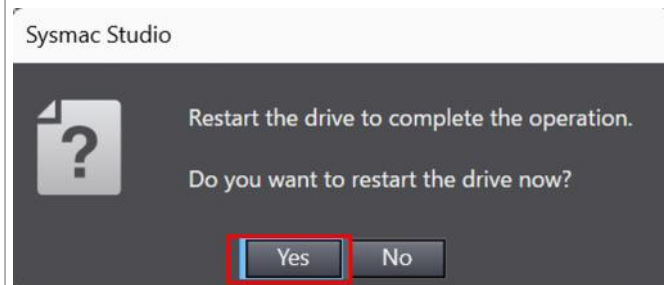


⑨ Execute [Reset Motor Replacement Detection error].

If "95.05: Motor replacement detection" error occurs when replacing the Servo Drive, execute [Reset Motor Replacement Detection error].



After executing the reset, a pop-up window as shown in the figure below will be displayed, so click the [Yes] button.



* LED indication of the Servo Drive when "Motor replacement detection" error occurred



Remarks