

Unit Replacement: NJ/NX

Steps

This section describes the steps for replacing the NJ/NX-series CPU Unit.

- ① Back up the data.
- ② Turn OFF the power supply and replace the device.
- ③ Turn ON the power supply and go online.
- ④ Select [Tools] - [Backup] - [Restore Controller] from the menu.
- ⑤ Select the data to restore.
- ⑥ Execute the restore.

Detailed Steps

① Back up the data.

Obtain backups by referring to "[Obtaining Backups from NJ/NX](#)".
If you have already obtained the backup, this step is not necessary.

② Turn OFF the power supply and replace the device.

③ Turn ON the power supply and go online.

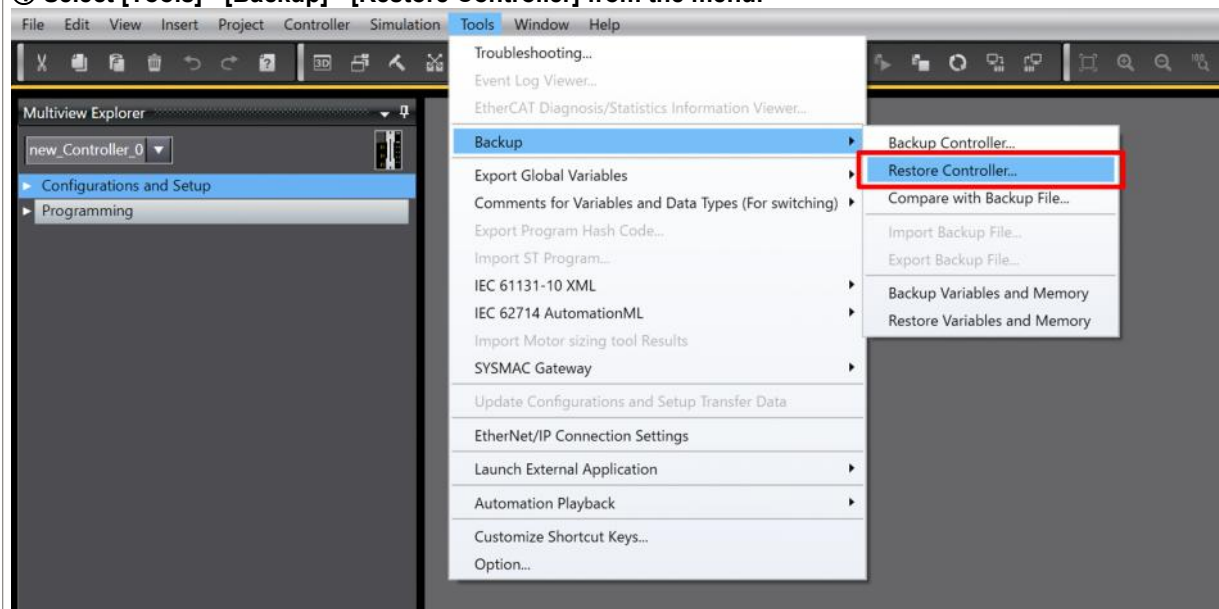
Go online with the Controller by referring to "[Going Online with an NJ/NX Controller](#)".

* The IP address of the built-in EtherNet/IP port in the factory-shipped state is as follows:

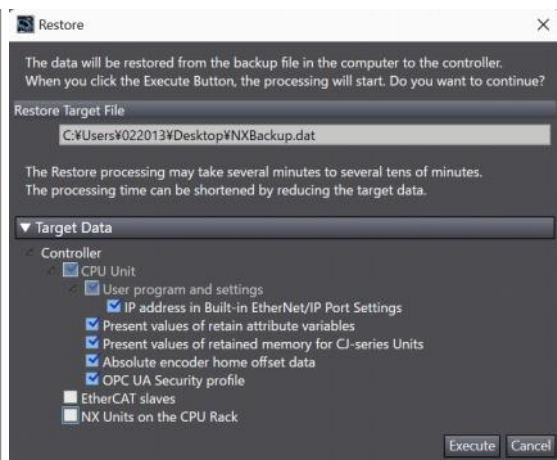
NJ-series, NX1P-series: 192.168.250.1

NX7-series, NX102-series: Port 1: 192.168.250.1
Port 2: 192.168.251.1

④ Select [Tools] - [Backup] - [Restore Controller] from the menu.

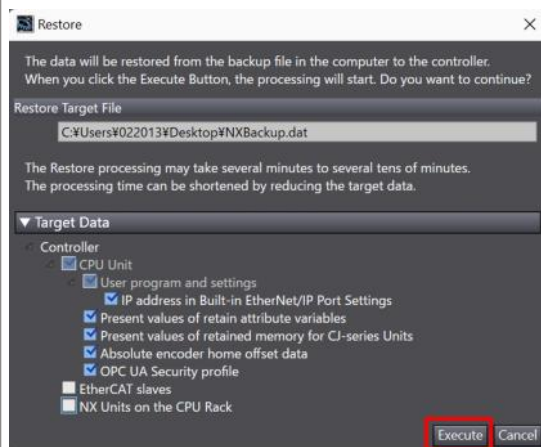


⑤ Select the data to restore.

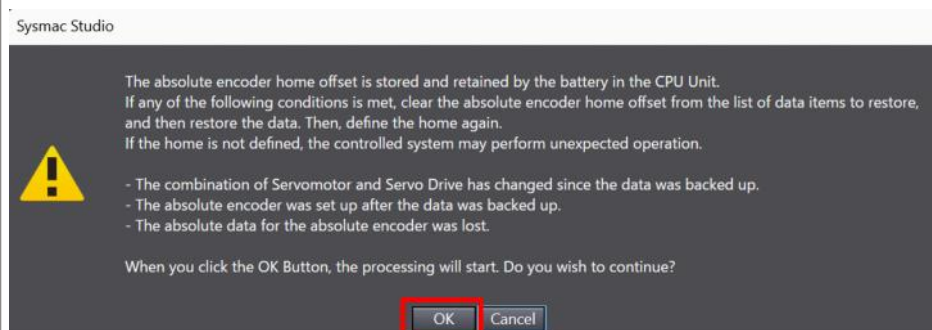


⑥ Execute the restore.

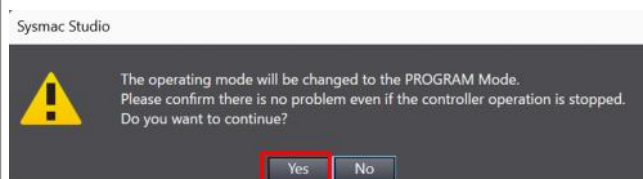
Select the [Execute] button.



Select the [OK] button.



Select the [Yes] button.



Remarks

You can compare the backup data with the Controller data by executing [Tools] - [Backup] - [Compare with Backup]

File].

