

# Unit Replacement: NX-ECC

## Steps

This section describes the steps for replacing the NX-ECC.

- ① Upload the configuration data to the project.
- ② Turn OFF the power supply and replace the device.
- ③ Turn ON the power supply and go online.
- ④ Click the [Synchronization] button on the toolbar.
- ⑤ Execute the download.
- ⑥ Open the [Unit Operation Settings] screen.
- ⑦ Download the parameters.

\* When replacing couplers with different revisions, please refer to the PPTX file in the [link](#).

## Detailed Steps

### ① Upload the configuration data to the project.

Upload the data by referring to "[Uploading an NJ/NX Project \(New Project\)](#)".

\* When uploading, make sure that "EtherCAT Slave" is included in the target to transfer.

### ② Turn OFF the power supply and replace the device.

Set the node address of the replaced device to the same value as the previous device.

### ③ Turn ON the power supply and go online.

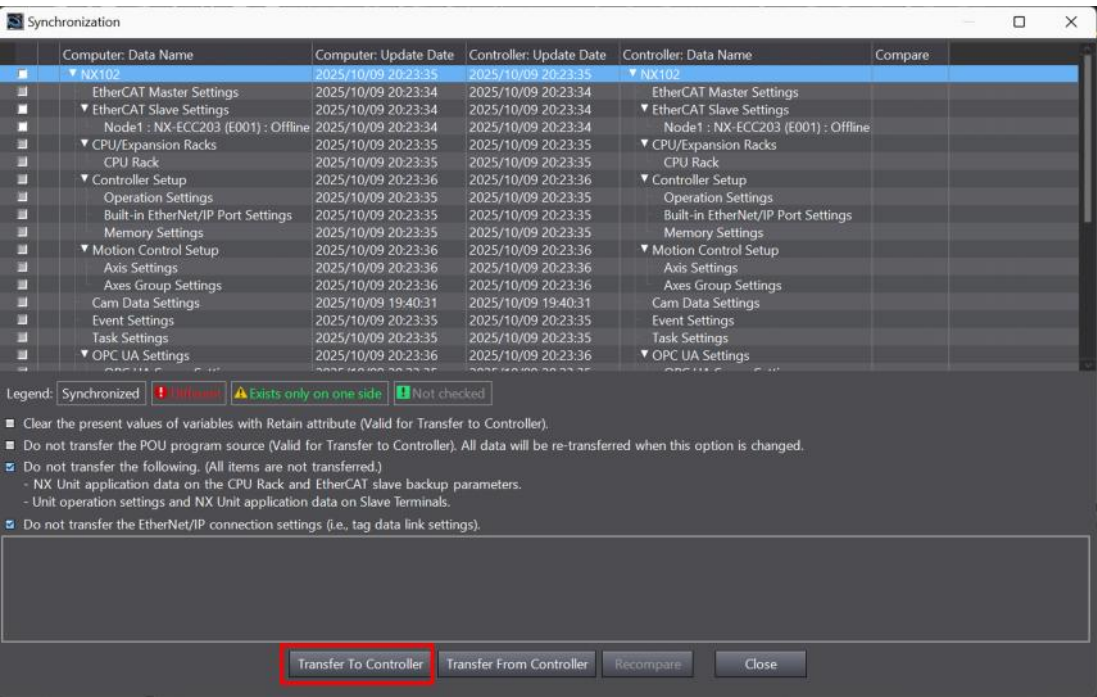
Go online with the Controller to which the NX-ECC is connected by referring to [Going Online with an NJ/NX Controller](#)".

### ④ Click the [Synchronization] button on the toolbar.



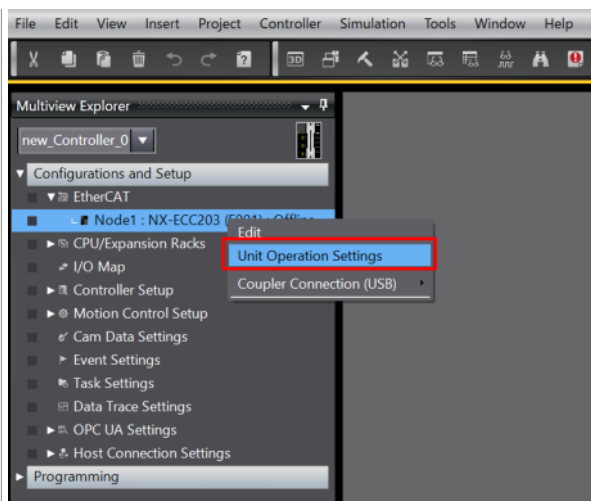
### ⑤ Execute the download.

Click the [Transfer To Controller] button.



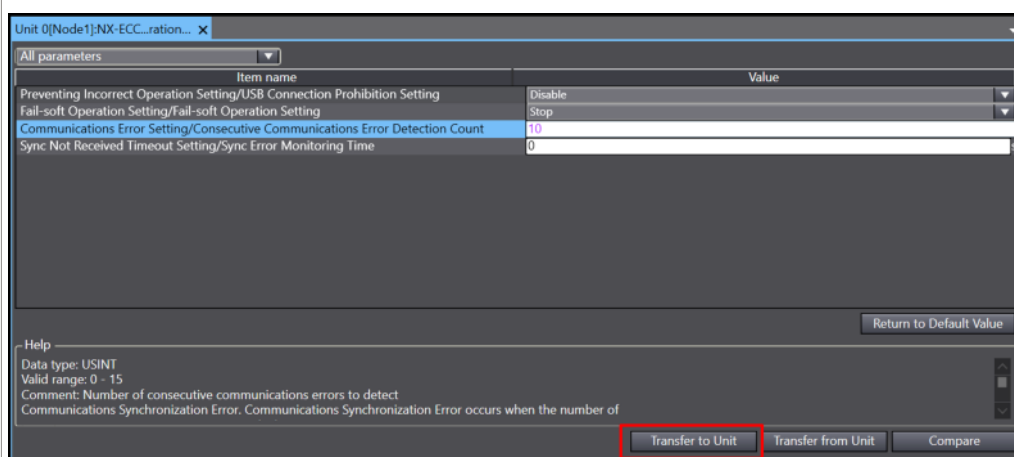
### ⑥ Open the [Unit Operation Settings] screen.

Right-click on the NX-ECC that you replaced from [Configurations and Setup] - [EtherCAT] in the Multiview Explorer, and select [Unit Operation Settings].



### ⑦ Download the parameters.

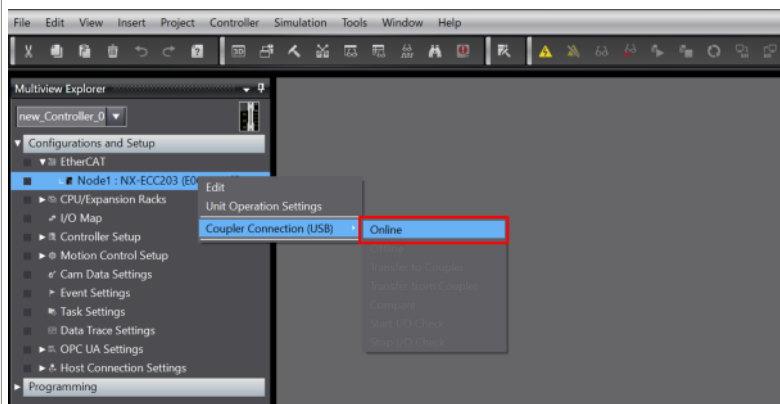
Click the [Transfer to Unit] button.



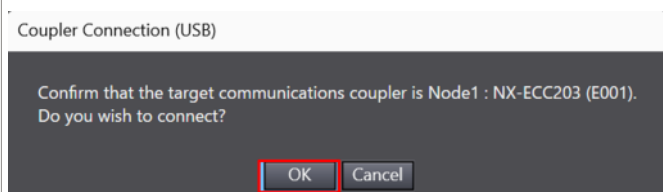
### Remarks

If you cannot upload data via the Controller due to an NX-ECC failure, connect directly using a USB cable and upload the data with following the steps described below.

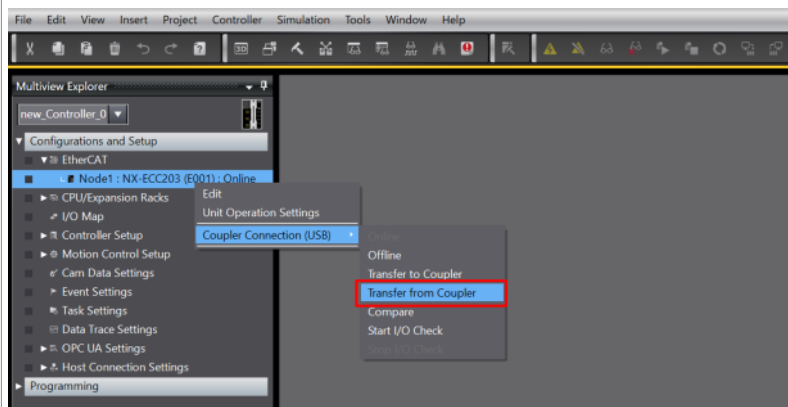
① In the Multiview Explorer, select [Configurations and Setup] - [EtherCAT] and right-click on the NX-ECC to connect online and select [Coupler Connection (USB)] - [Online].



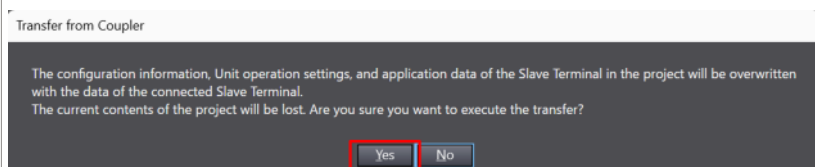
② Click the [OK] button.



③ In the Multiview Explorer, select [Configurations and Setup] - [EtherCAT] and right-click on the NX-ECC to connect online.  
Click [Coupler Connection (USB)] - [Transfer from Coupler].



④ Click the [Yes] button.



Also, if the revision of the spare NX-ECC is different, please replace it by referring to the following information:  
<<Procedure for Replacing NX-ECC under Conditions of Faulty ECAT Connection.pptx>>



Procedure  
forReplac...