

Unit Replacement : NX-SL Safety CPU Unit

Steps

- ① Upload the safety program.
- ② Turn OFF the power supply and replace the device.
- ③ Turn ON the power and go online with the Controller.
- ④ Click the [Synchronization] button on the toolbar.
- ⑤ Set the transfer target so that the safety program is downloaded.
- ⑥ Execute the download.

Detailed Steps

① Upload the safety program.

Upload the safety program by referring to “[Uploading an NX-SL Safety Program](#)”.
If you already have the data stored, this step is unnecessary.

② Turn OFF the power supply and replace the device.

③ Turn ON the power and go online with the Controller.

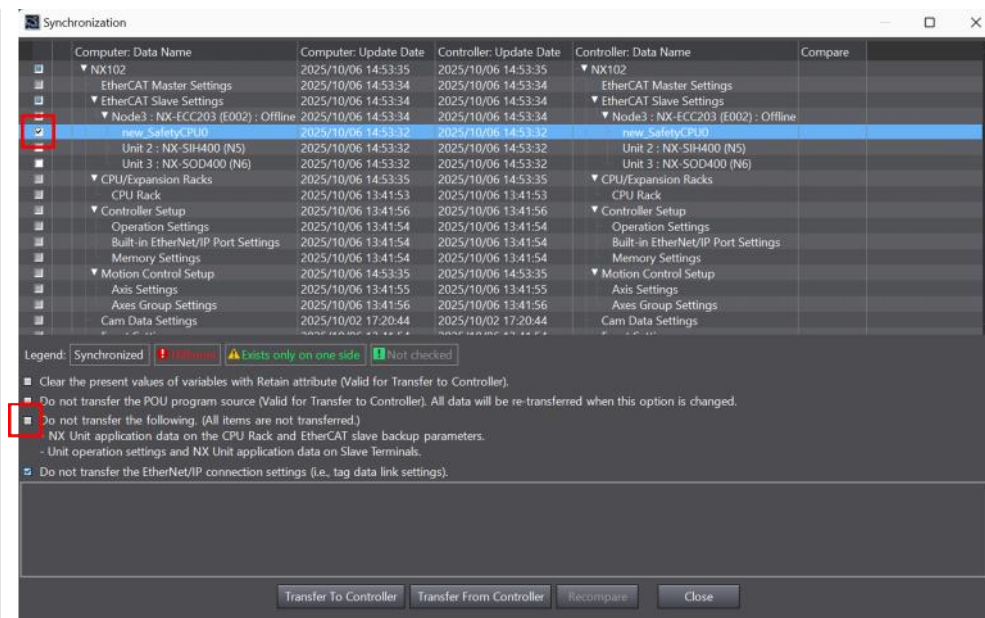
Go online with the Controller by referring to “[Going Online with an NJ/NX Controller](#)”.

④ Click the [Synchronization] button on the toolbar.

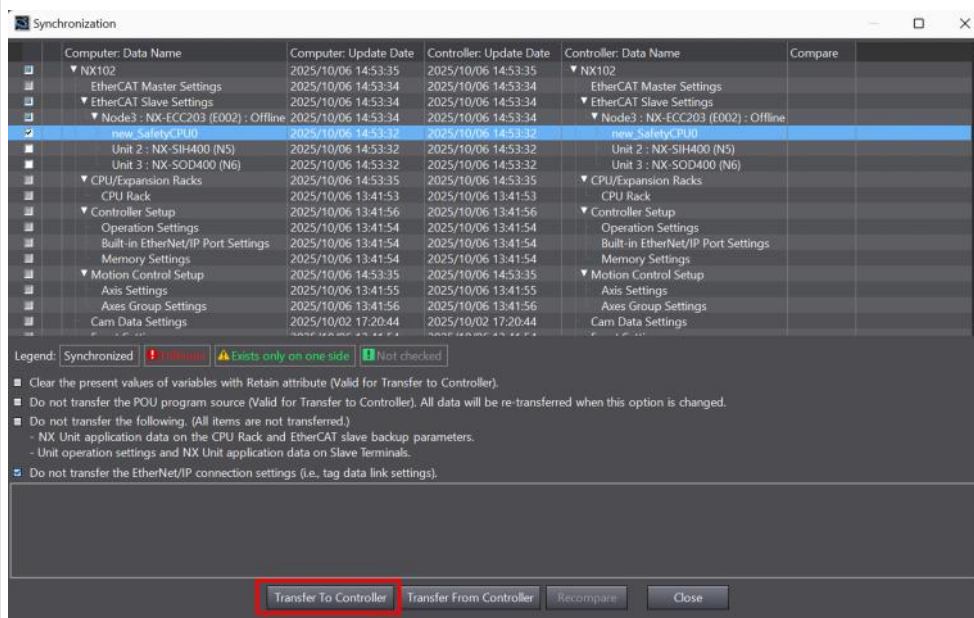


⑤ Set the transfer target so that the safety program is downloaded.

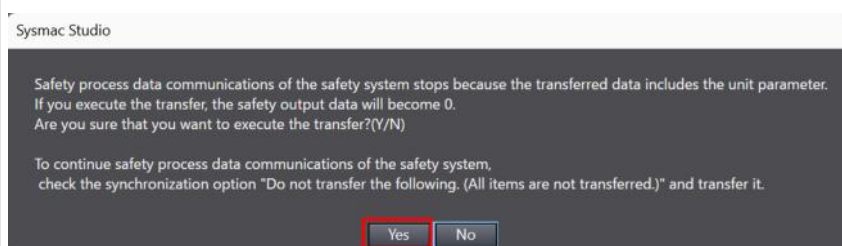
Place a checkmark in the checkbox for the Safety CPU Unit as the target of transfer and uncheck "Do not transfer the following. (All items are not transferred)" in the synchronization options.



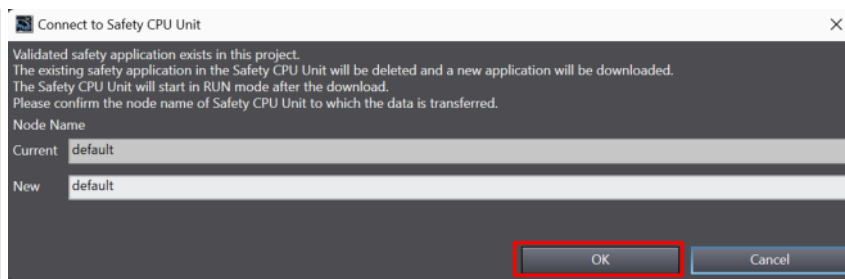
⑥ Execute the download.
Select [Transfer To Controller].



Select the [Yes] button.



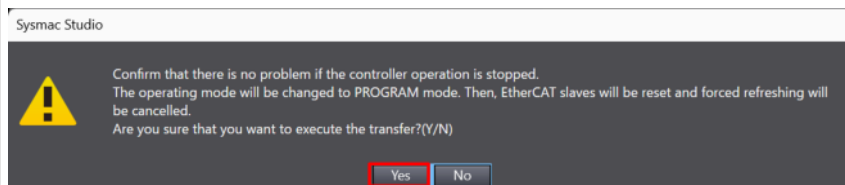
Select the [OK] button.



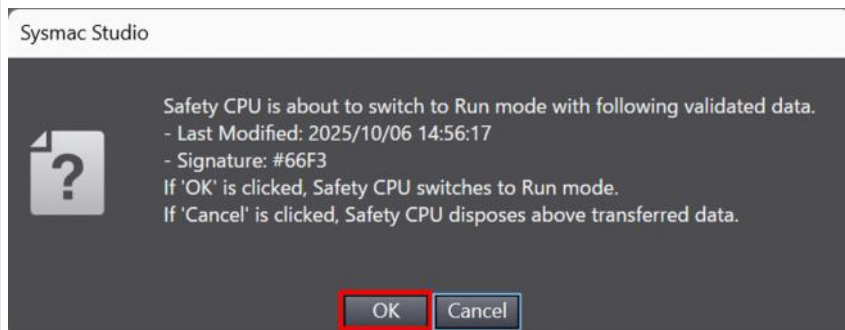
Enter the password and select the [OK] button.
If no password has been set, leave the field blank and select [OK].



Select the [Yes] button.



Select the [OK] button.



Select the [Yes] button.

