

# Downloading an NX-SL Safety Program

## Steps

This section describes how to download a program to the Safety CPU Unit.

- ① Go online with the Safety CPU Unit.
- ② Change the operating mode 1 (RUN Mode => PROGRAM Mode)
- ③ Change the operating mode 2 (PROGRAM Mode => DEBUG Mode)
- ④ Validate safety.
- ⑤ Change the operating mode 3 (DEBUG Mode => RUN Mode)

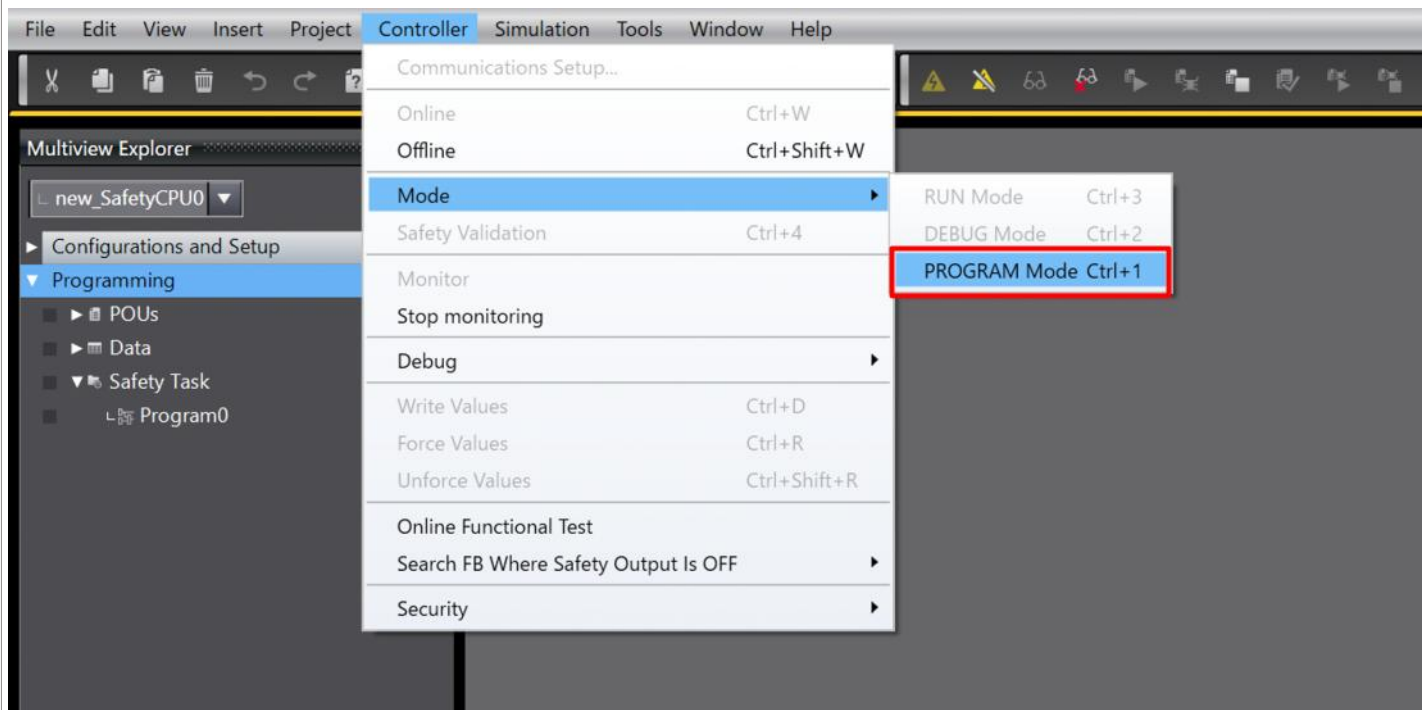
## Detailed Steps

### ① Go online with the Safety CPU Unit.

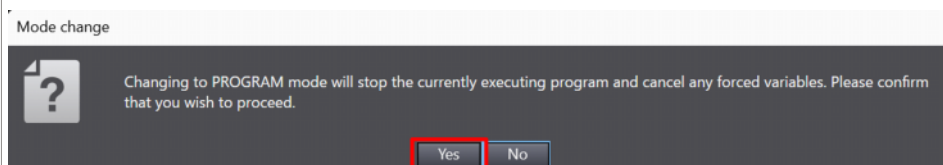
Refer to [Going Online with an NX-SL Safety CPU Unit](#) for the instructions to go online.

### ② Change the operating mode 1 (RUN Mode => PROGRAM Mode)

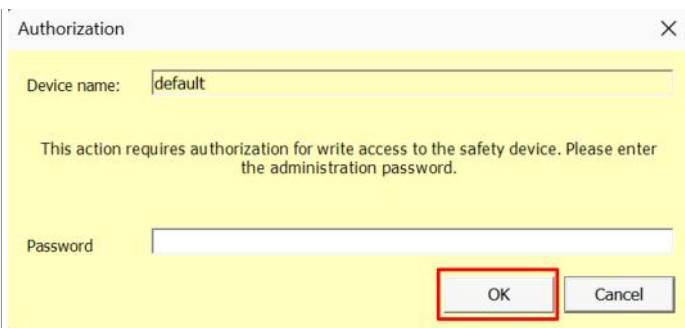
Click [Controller] - [Mode] - [Program Mode] from the menu bar.



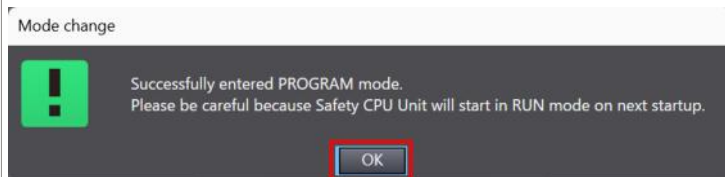
Click the [Yes] button on the Mode change dialog box.



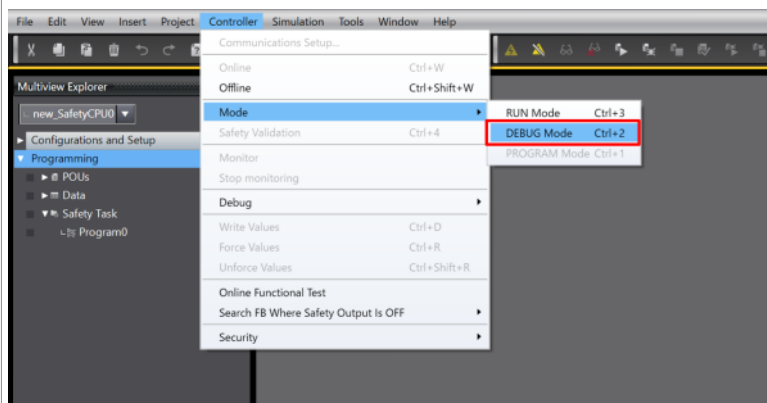
Enter the password on the password confirmation screen and click the [OK] button. If you have not set a password, click the [OK] button without entering anything.



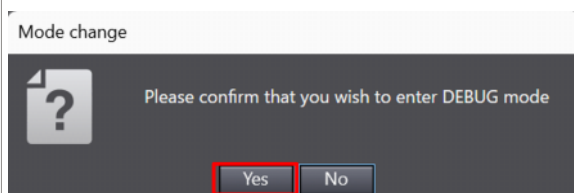
A dialog box that indicate successful switching to the PROGRAM Mode is displayed.



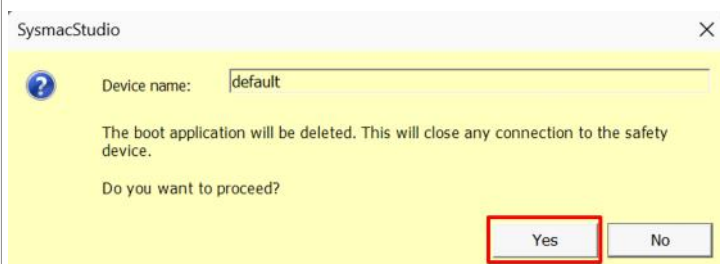
**③ Change the operating mode 2 (PROGRAM Mode => DEBUG Mode)**  
Click [Controller] - [Mode] - [Debug Mode] from the menu bar.



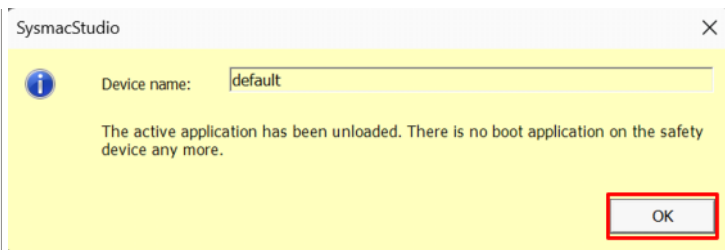
Click the [Yes] button on the mode change dialog box.



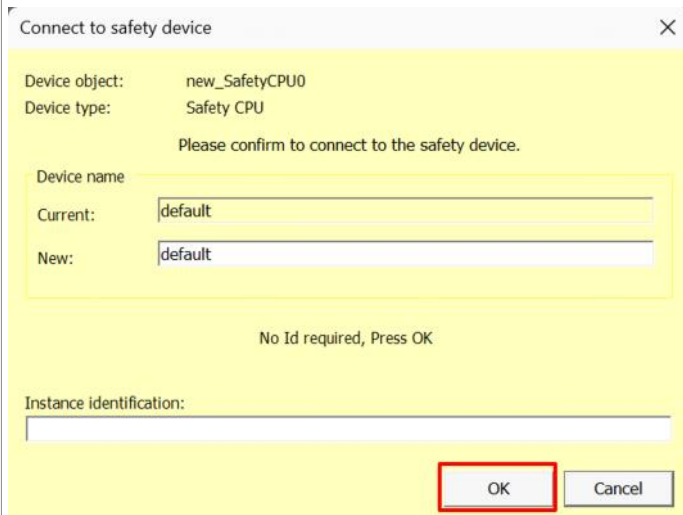
Click the [Yes] button on the window shown below.



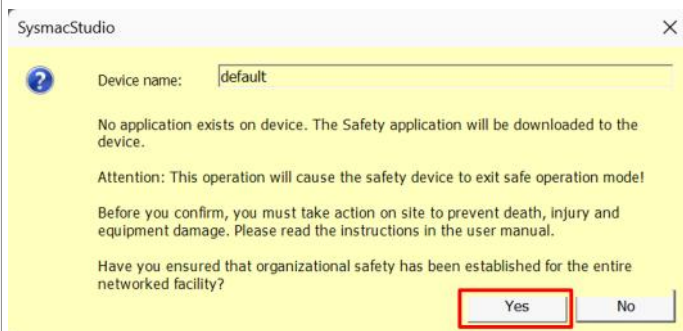
Click the [OK] button.



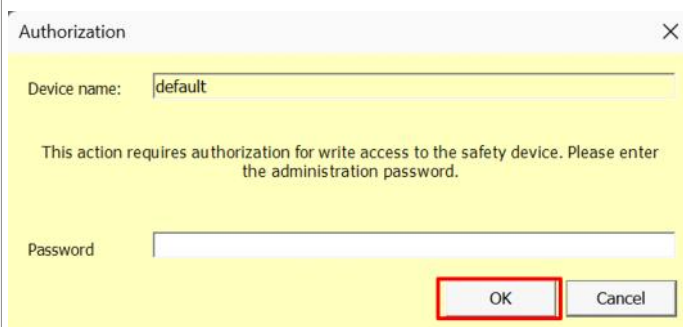
Click the [OK] button.



Click the [Yes] button.

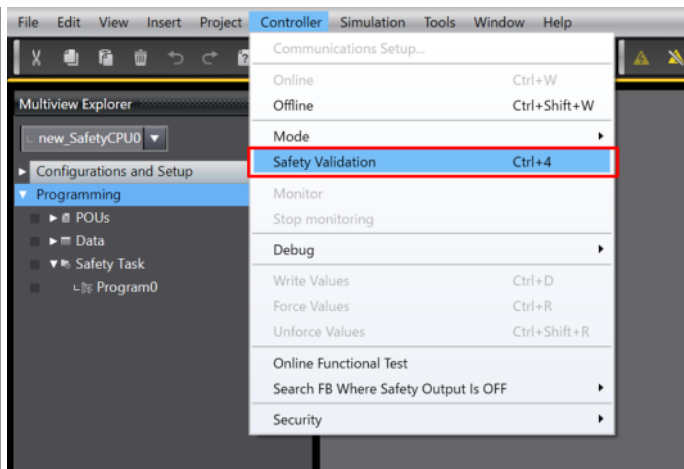


Enter the password and click the [OK] button. If you have not set a password, click the [OK] button without entering anything.

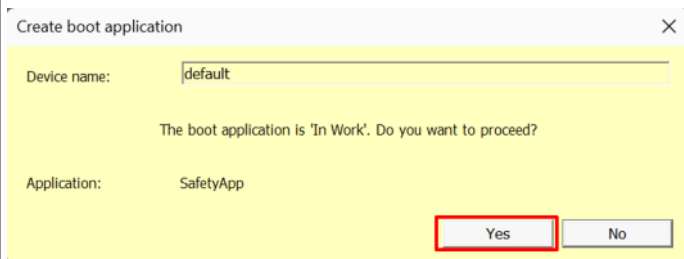


#### ④ Validate safety.

Click [Controller] - [Safety Validation] from the menu bar.



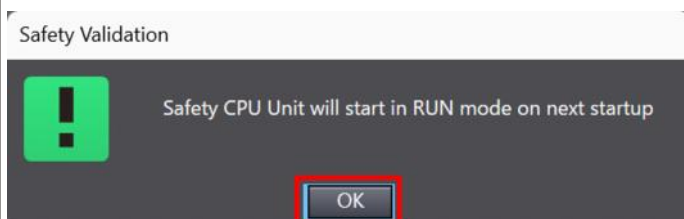
Click the [Yes] button.



Click the [OK] button.

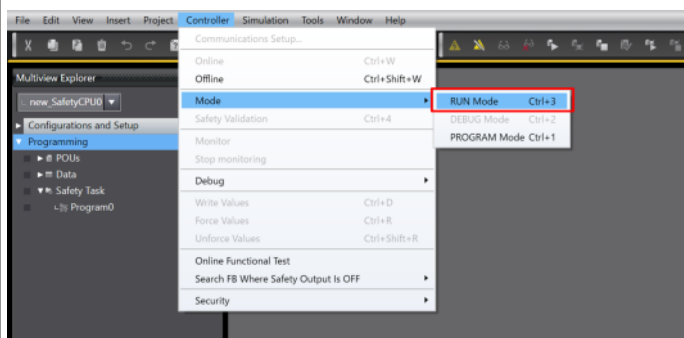


Click the [OK] button.

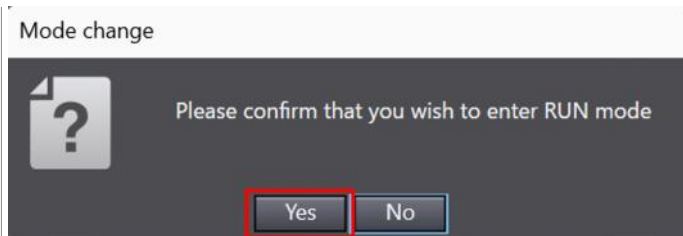


##### ⑤ Change the operating mode 3 (DEBUG Mode => RUN Mode)

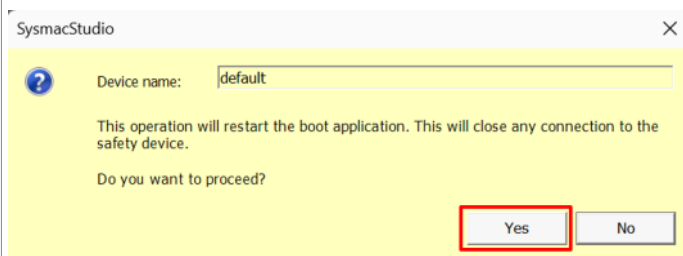
Click [Controller] - [Mode] - [RUN Mode] from the menu bar.



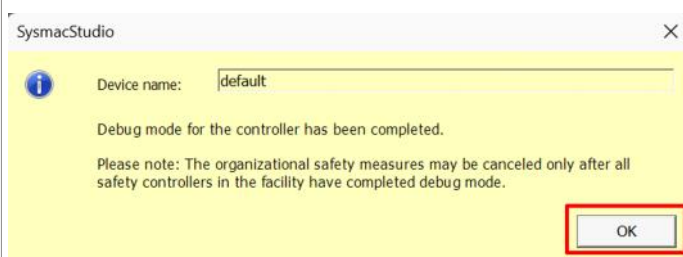
Click the [Yes] button on the mode change dialog box.



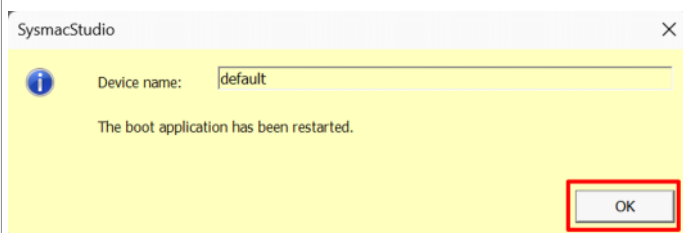
Click the [Yes] button.



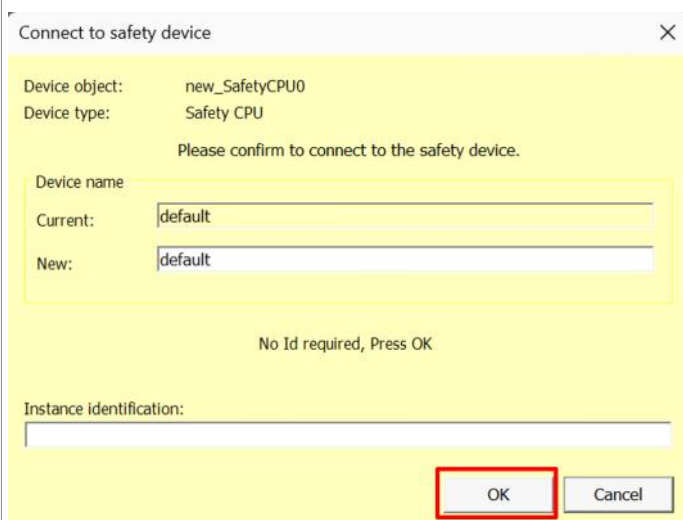
Click the [OK] button.



Click the [OK] button.



Click the [OK] button.



The download is now complete and the Safety CPU Unit is in RUN Mode.