

Monitoring Safety I/O Units

Steps

This section describes how to check the status of Safety I/O Units in the Sysmac Studio.

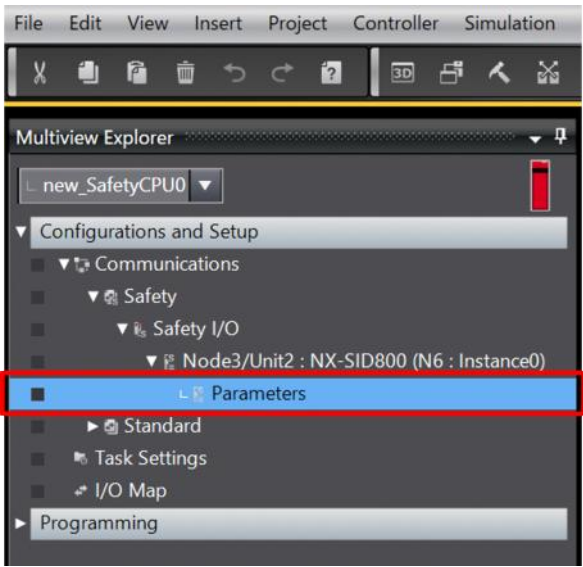
- ① Go online with the Safety PLC.
- ② Open the [Parameters] of the slave you want to monitor from [Configurations and Setup] - [Safety I/O] in the Multiview Explorer.
- ③ Select the Unit to be monitored and check its status.

Detailed Steps

① Go online with the Safety PLC.

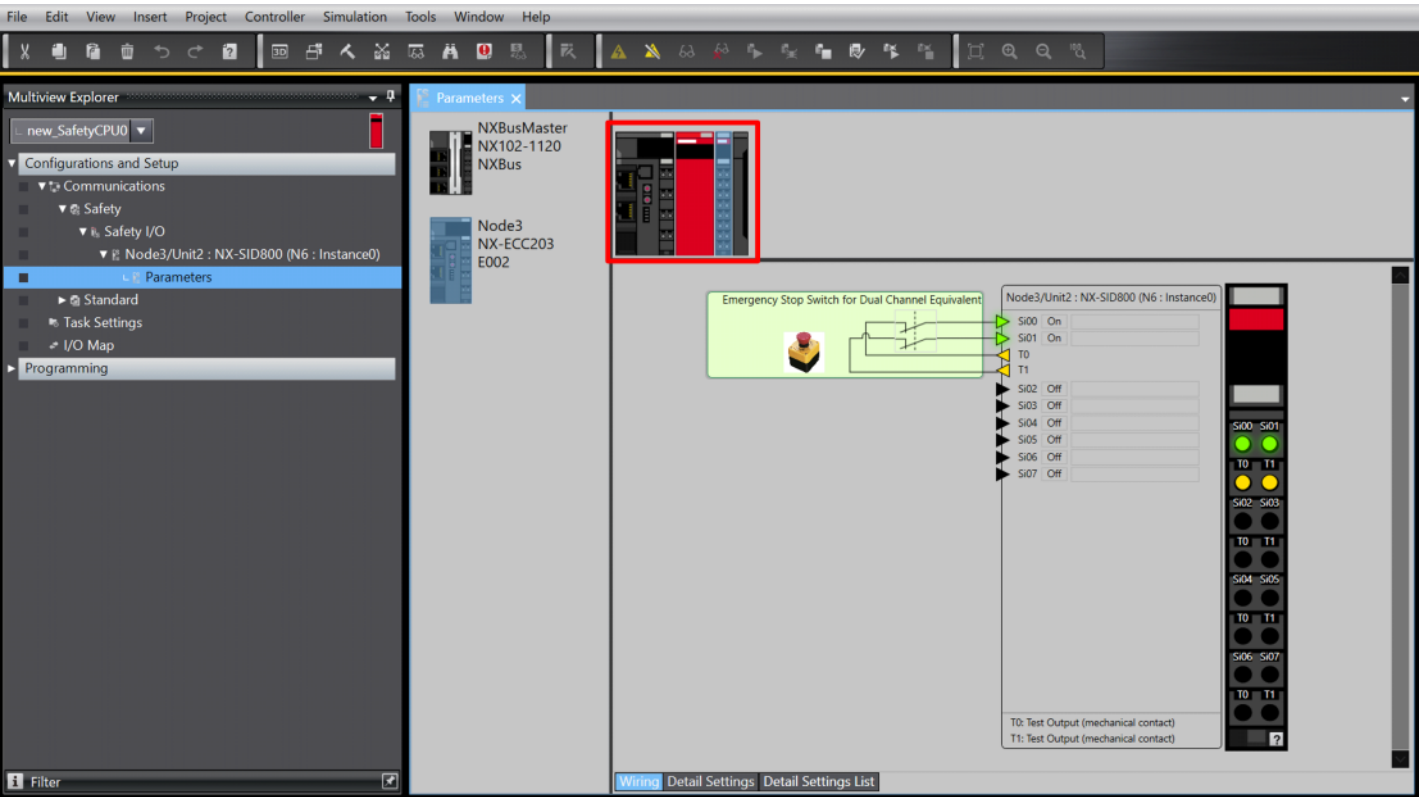
Refer to [Going Online with an NX-SL Safety CPU Unit](#) for the instructions to go online.

② Open the [Parameters] of the slave you want to monitor from [Configurations and Setup] - [Safety I/O] in the Multiview Explorer.



③ Select the Unit to be monitored and check its status.

When you select a Unit in the red circle area, the current status of the Unit is displayed below.



Example: Change of the display when the [Emergency Stop] button is pressed.

