

Comparing The Safety Unit Offline

Steps

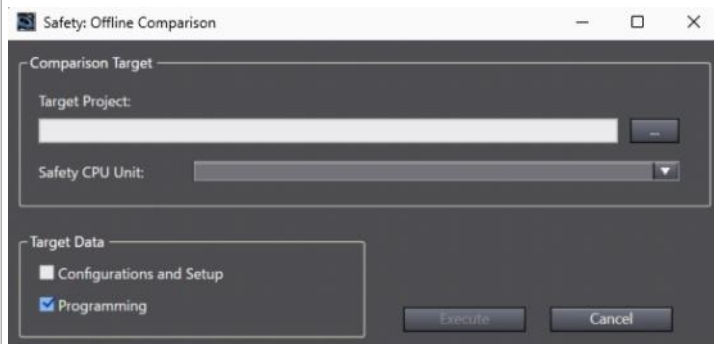
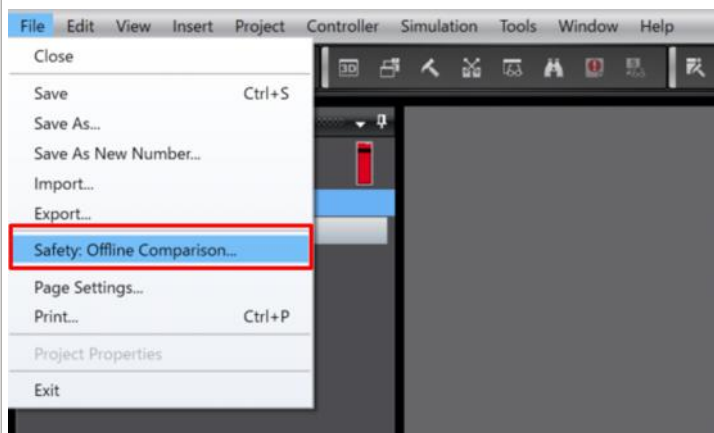
This section describes the offline comparison of the safety application data.

- ① Open Safety: Offline Comparison Window.
- ② Select the project file to compare with.
- ③ Select the data to be compared.
- ④ Press the [Execute] button to execute the comparison.
- ⑤ Check the differences from the comparison results.

Detailed Steps

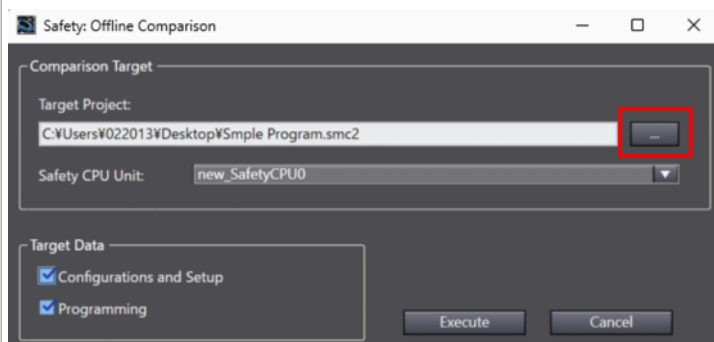
① Open Safety: Offline Comparison Window.

Open the project of the Safety CPU Unit.
Click [Safety: Offline Comparison] from the [File] menu.
The Safety: Offline Comparison Window is displayed.



② Select the project file to compare with.

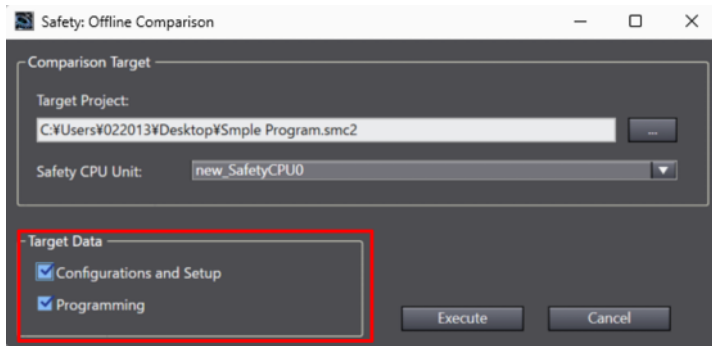
Click the [...] button and select the project file you want to compare offline.



③ Select the data to be compared.

Select the items you want to compare.

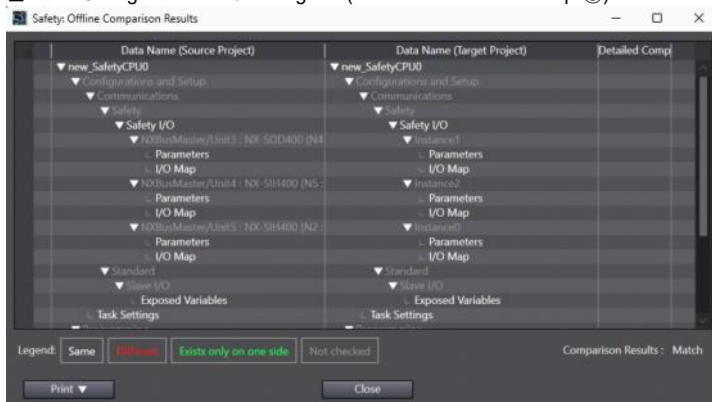
- Configurations and Setup
- Programming



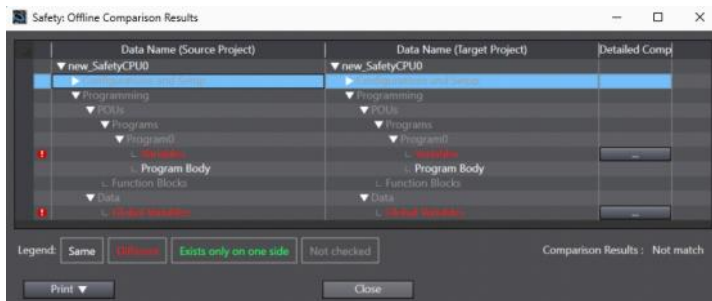
④ Press the [Execute] button to execute the comparison.

⑤ Check the differences from the comparison results.

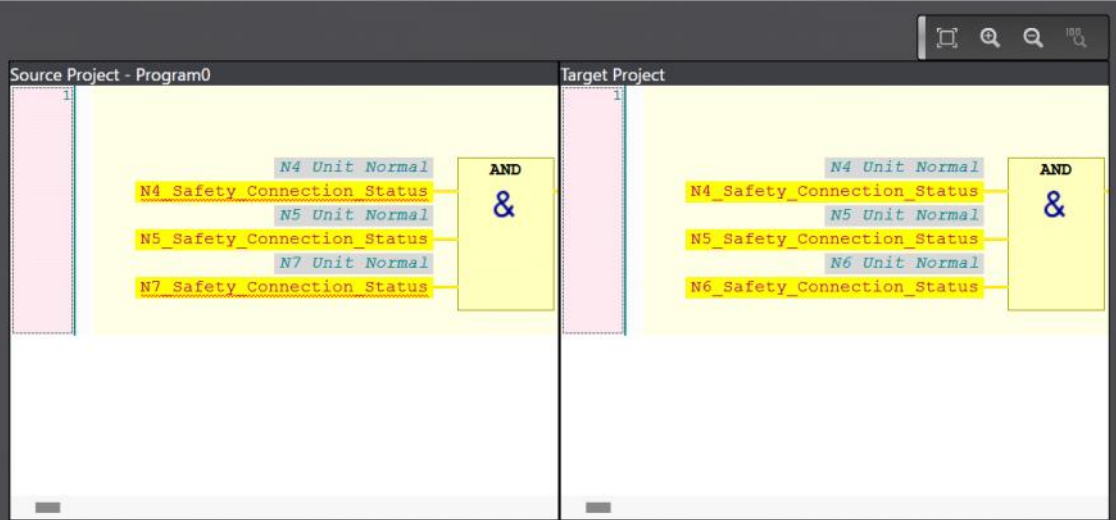
■ If the Configuration and/or Program (the items checked in step ③) matched as a result of the comparison, the following window is displayed.



■ If the result of comparison does not match, the following window is displayed.



■ For differences, click the [...] button in the Detailed Comparison column to display the details of the comparison results.



No.	Source Network Number	Target Network Number	Comparison Results	Reference
1	1	1	Different	...

Copy Selected Right to Left

Copy All Right to Left

Print OK Cancel