

For Faster Tool Operation: Turning OFF The Safety Monitoring

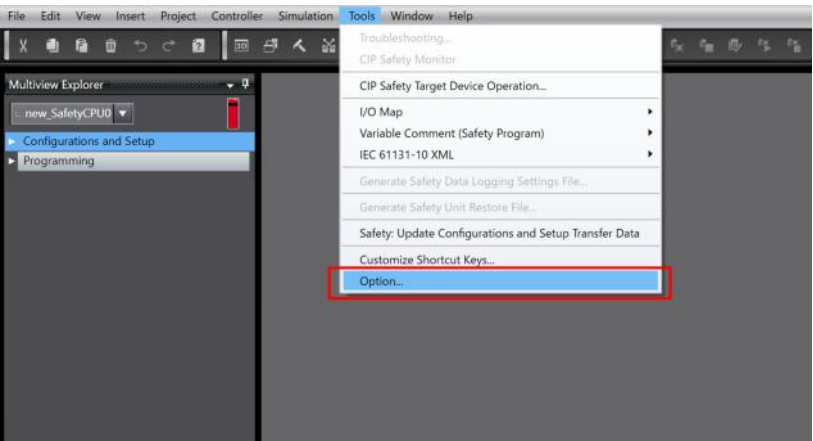
Steps

If a Safety CPU Unit is included in the program, the tool will operate faster when the monitoring function is turned OFF.

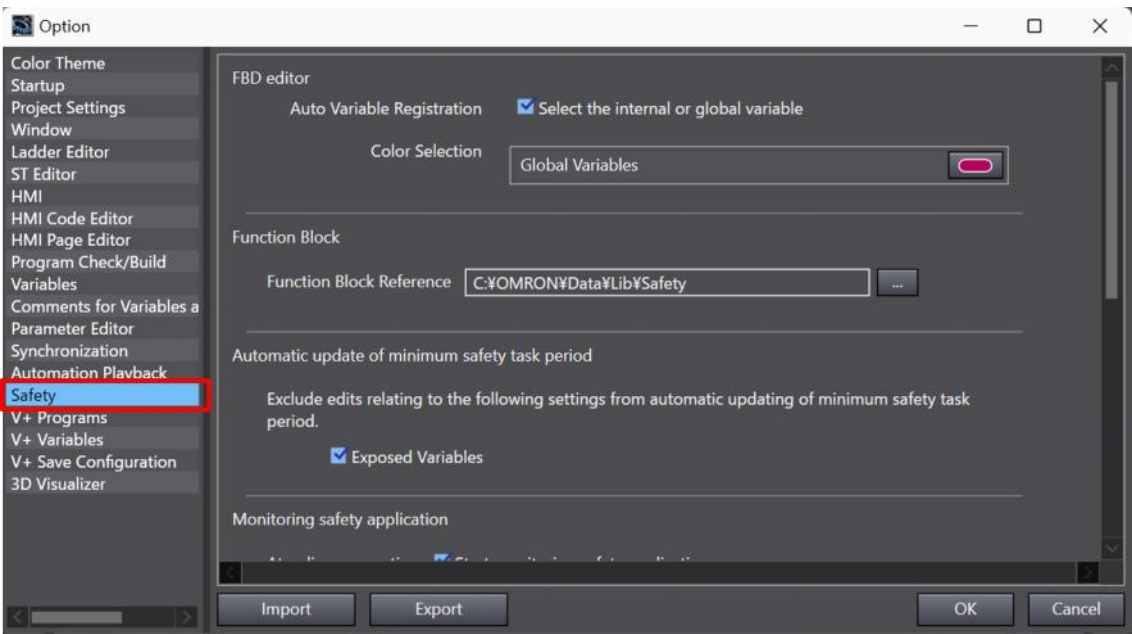
- Steps for turning OFF the function
- ① Select [Tools] - [Option] from the menu bar on the safety application window.
 - ② Click the [Safety] tab.
 - ③ Remove the checkmark from the [Start monitoring safety application.] check box and click OK.

Detailed Steps

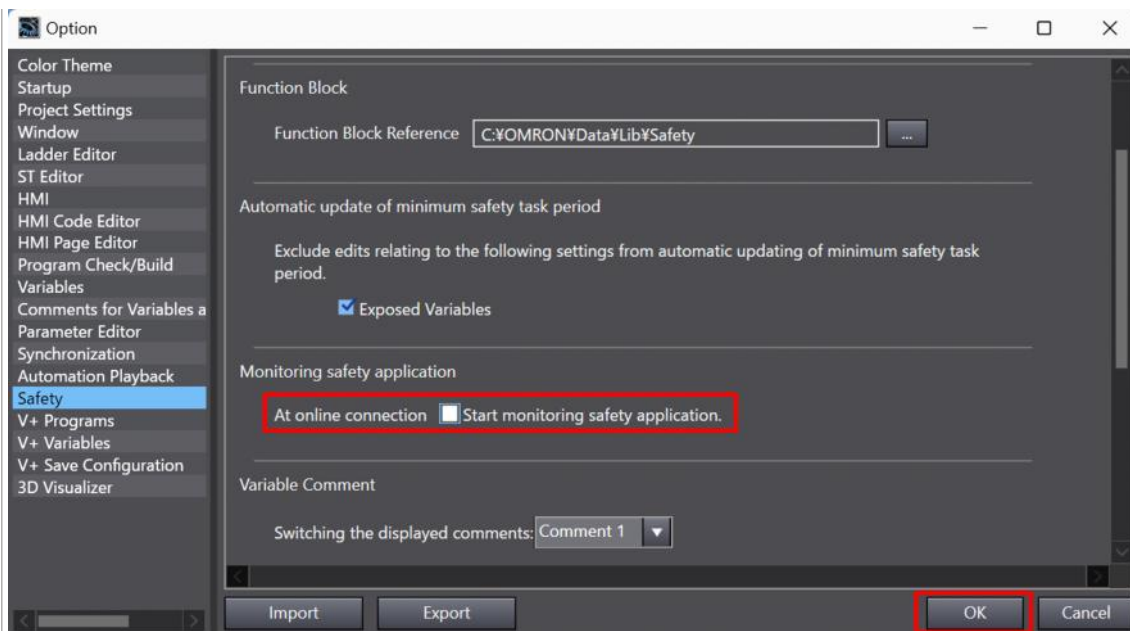
- ① Select [Tools] - [Option] from the menu bar on the safety application window.



- ② Click the [Safety] tab.



- ③ Remove the checkmark from the [Start monitoring safety application.] checkbox and click the [OK] button.



If you want to use the monitoring function, select the "Start monitoring safety application." checkbox and click the [OK] button. When you no longer need the function, remove the checkmark from the checkbox.