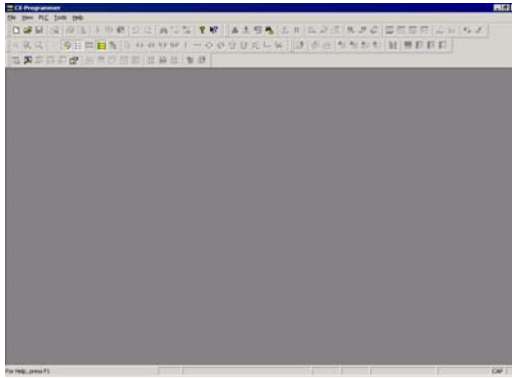


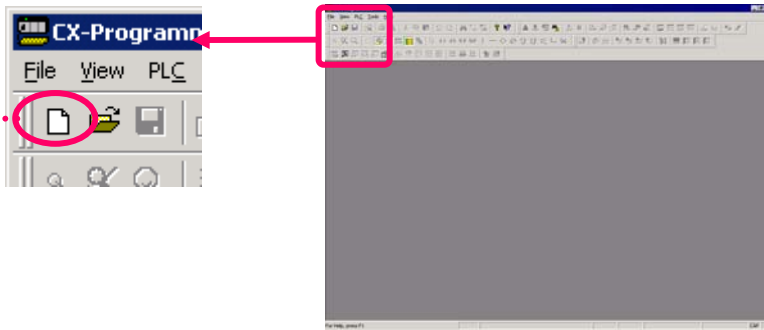
Starting CX-Programmer

Starting CX-Programmer

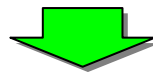
From the [Start] menu, select [Programs] > [OMRON] > [CX-One] > [CX-Programmer] > [CX-Programmer] to start CX-Programmer. (Or select [All Programs] > [OMRON] > [CX-One] > [CX-Programmer] > [CX-Programmer])



Click this button to create a new CX-Programmer project.

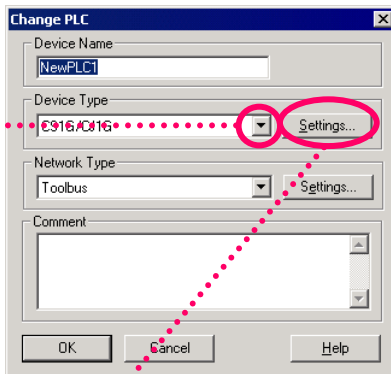


Creating a New Project



Dedicated Support Software for each Unit can be started, succeeding communications settings from CX-Programmer. You will not have to set up communications using dedicated Support Software if you set up communications here.

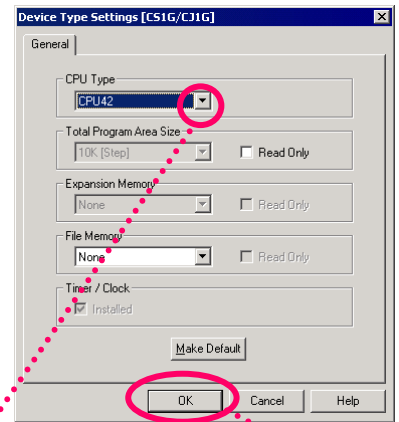
Click [v] and select PLC model.



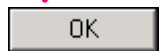
Left-click



Select a PLC model from the following to use Function Blocks.
CJ2H, CJ2M, CJ1H-H, CJ1G-H, CJ1M, CS1H-H, CS1G-H, CP1H, CP1L, CP1L-E



Click [v] and select CPU type.



Click [OK] and determine CPU type.