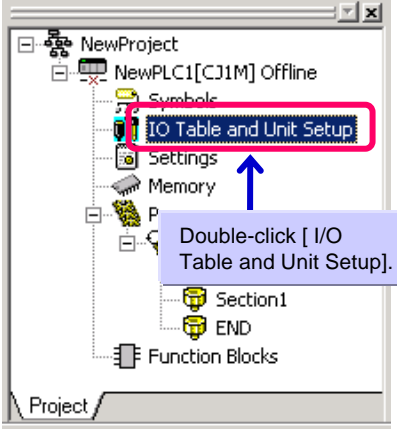


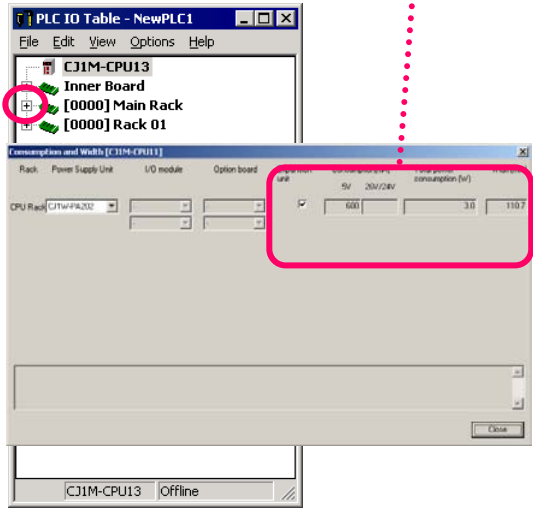
Creating Unit Configuration

Start the I/O Table/Unit setup function.

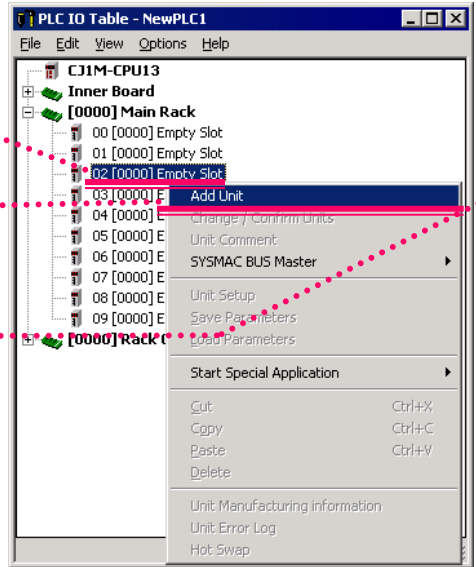


Double-click [I/O Table and Unit Setup]

When you select [Option] > [Consumption(mA)] from the menu, you can check the width and current consumption after PLC Unit configuration. (Width indication is available only for SYSMAC CJ Series, CP1H Series.)



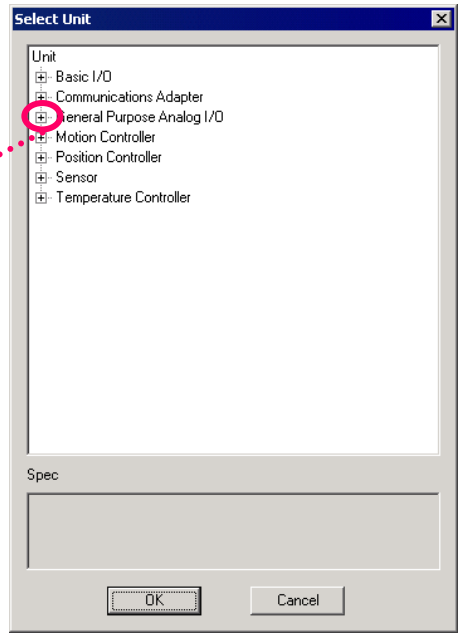
Right-click Empty Slot, select [Add Unit] and determine CPU type. Then select [General Purpose Analog I/O] from Unit selection window.



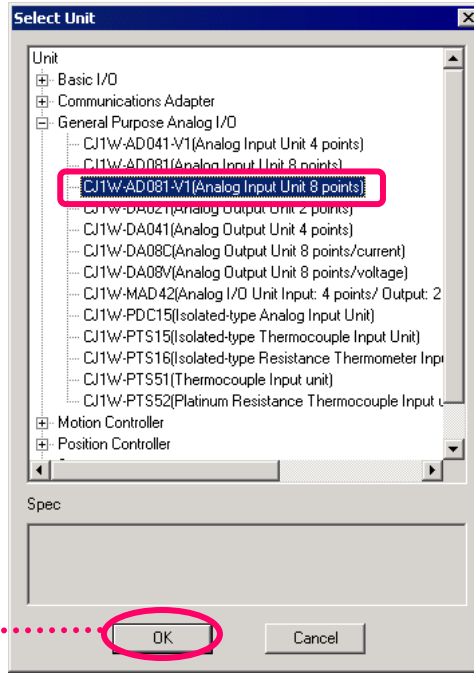
Right-click

Select [Add Unit]

Click + symbol on analog I/O

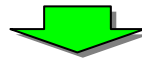


Select Unit Type.

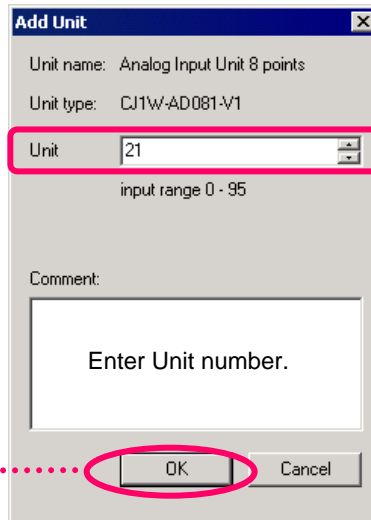


Click

OK



Select Unit and Number.



Click

OK

