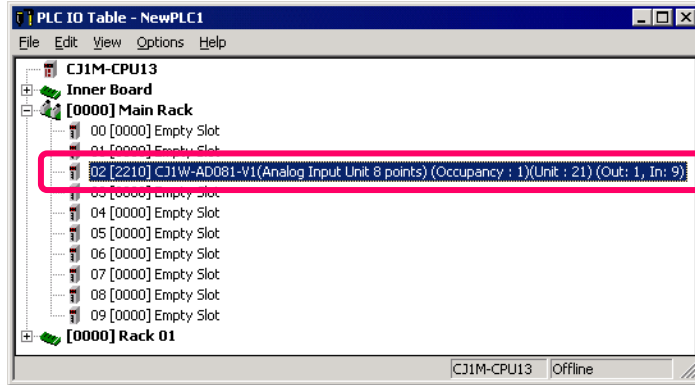
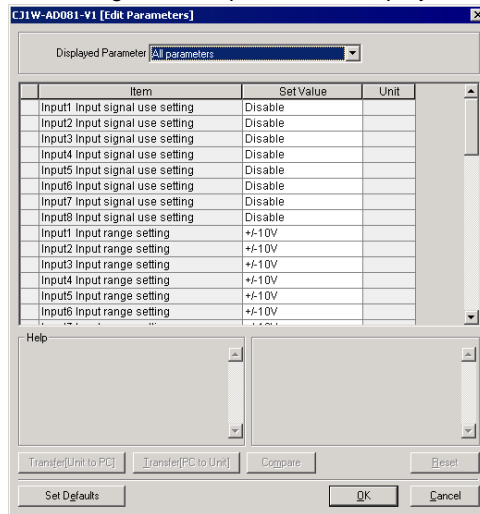


The Analog Unit is registered to the I/O Table as shown below. Set up the next analog Unit's parameter.



Double-click the analog Unit

The Analog Unit Setup Screen is displayed.

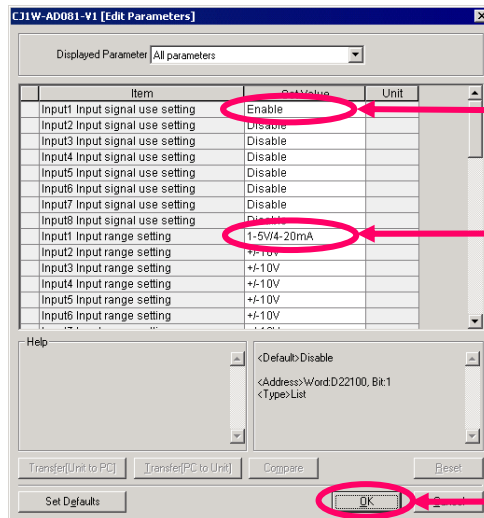


### CPU Bus Units and Special I/O Units Setting Function

Traditionally, initial CPU Bus Unit and Special I/O Unit settings were made by referring to documentation to calculate DM address from the Unit number and entering a hexadecimal number. Now you can set it using the pull-down menu in the CX-Programmer's I/O Table. Easy setup/transfer/verification operations are available from the integrated parameter settings screen as shown below, without recognizing addresses (this function uses CPS function of CX-One previously described).

## Setting CPU Bus Units and Special I/O Units

For example, specify input number designation and range.



Select [Enable] for input No.1 usage designation.

Select [1~5V/4~20mA] for input No.1 range setting.

Click the [OK] button.

Unit parameter setting

## NCF Unit and Servo Driver Connected to the NCF Unit Setup

As with Analog Unit registration, register the NCF Unit (CJ1W-NCF71).  
 The NCF Unit resides within a position control Unit.  
 Next, start CX-Motion-NCF using [Start with Settings Inherited].

When opening a stored project file after starting the dedicated tool, select [Start Only].  
 If [Start with Setting Inherited] is selected, a new project is created.

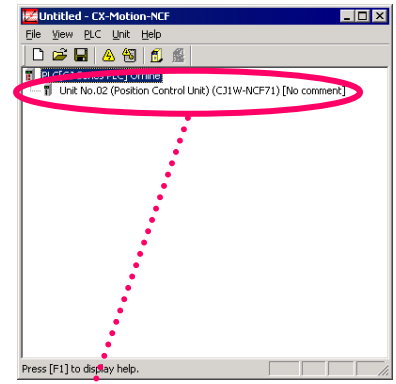
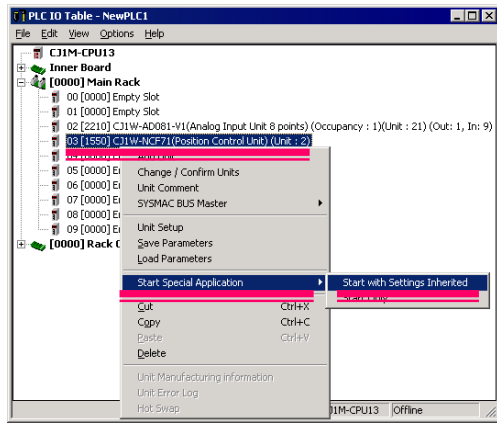
Right-click NCF Unit



Point [Start Special Application]



Click [Start with Settings Inherited]

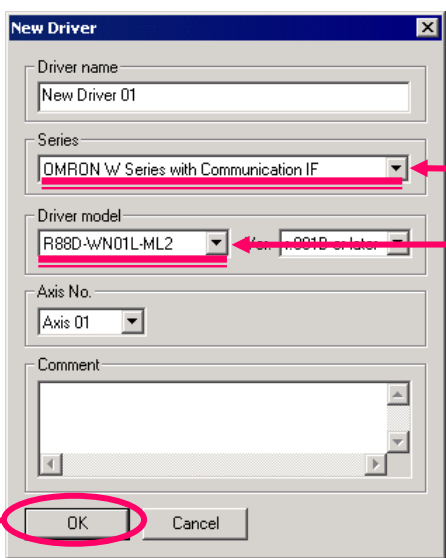
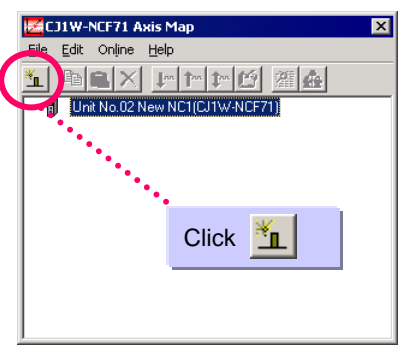
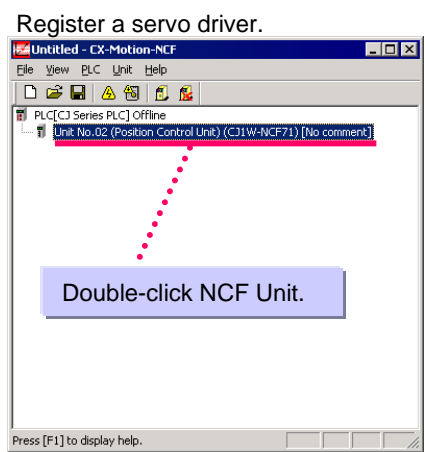


Displayed with NCF Unit registered.

Double-click NCF Unit



Click



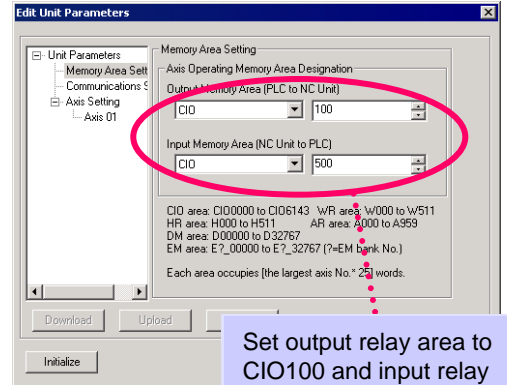
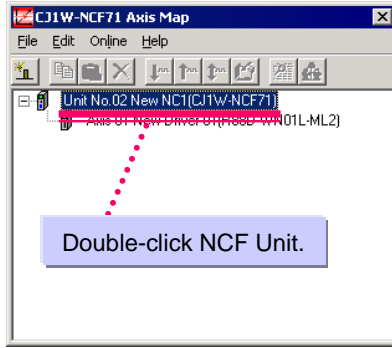
Select OMRON W series (with communications function).

Select R88D-WN01L-ML2.

Click

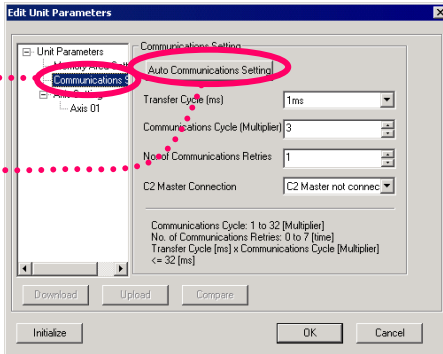
Double-click NCF Unit

Edit NCF Unit parameters.

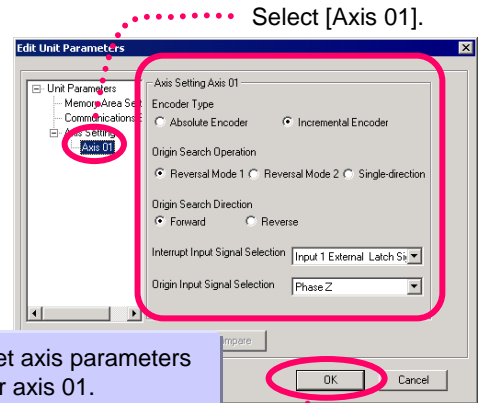


Set output relay area to CIO100 and input relay area to CIO500.

Select [Communications Setting]



Click Auto Communications Setting



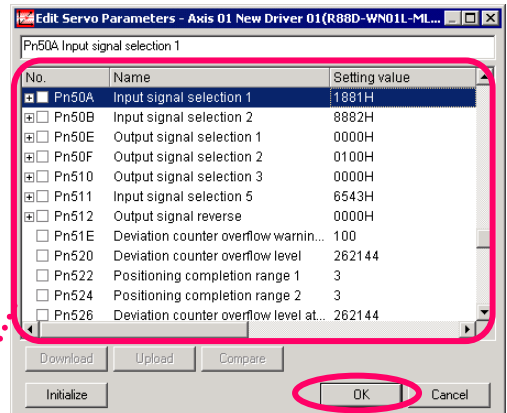
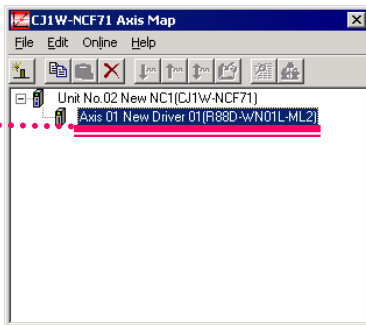
Select [Axis 01].

Set axis parameters for axis 01.

Click

Edit servo parameters.

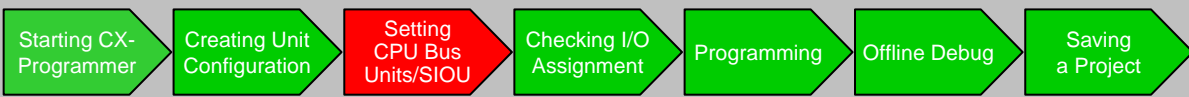
Double-click the servo driver



Set servo parameters for axis 01 as shown below.

- Pn50A(input signal selection 1): 2881
- Pn50B(input signal selection 2): 8883
- Pn511(input signal selection 5): 6541

Click



### Using the MCH Unit

When using the MCH Unit (CJ1W-MCH71) instead of the NCF Unit, use the following settings. As with Analog Unit, register the MC Unit to the I/O table. The MCH resides within the Motion Controller. Then start CX-Motion-MCH using [Start with Settings Inherited].

When opening a stored project file after starting the dedicated tool, select [Start Only]. If [Start with Setting Inherited] is selected, a new project is created.

Right-click MCH Unit



Point [Start Special Application]



Select [Start with Setting Inherited]



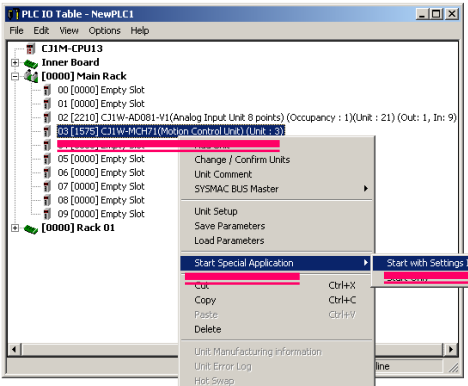
Add task, axis, program, and CAM data



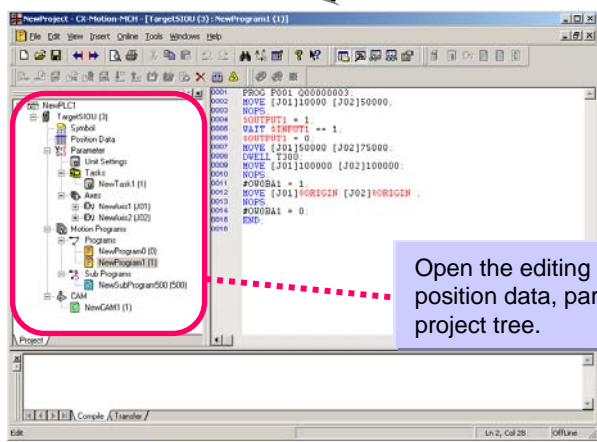
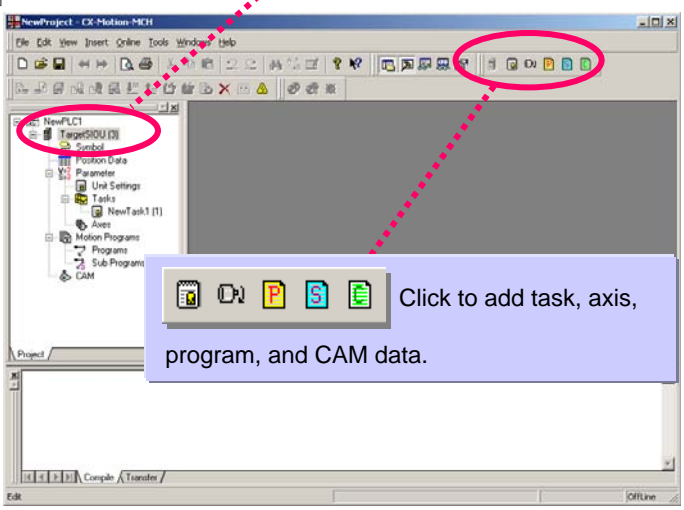
Edit position data, parameters, program, and CAM data



Save the project



Start the MCH Unit as registered.



Click and save the project to file.