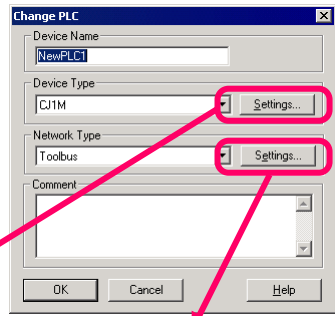
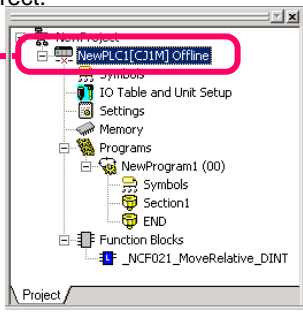


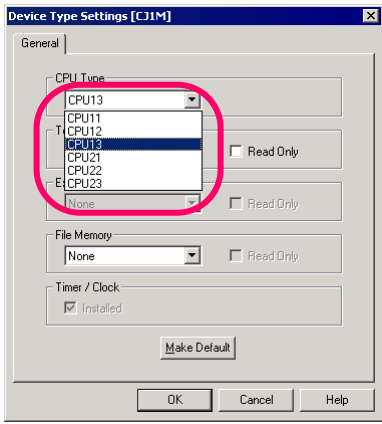
Online Connection to PLC

Verify that PLC model and communications setting created offline and the actual PLC are correct.

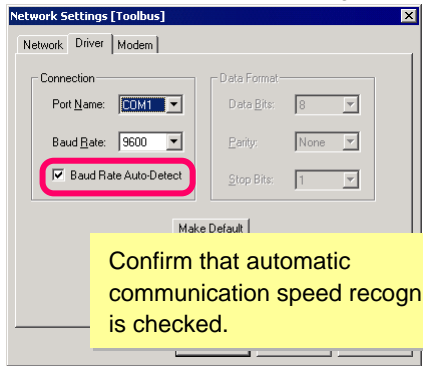
Double-click PLC



Check PLC model.



Check communications setting.

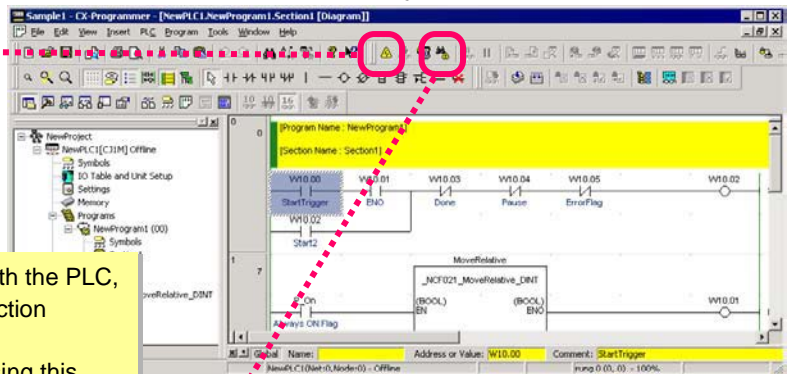


Confirm that automatic communication speed recognition is checked.

Click



(Online connection button)



If a connection cannot be established with the PLC, you can use the automatic online connection function.

Save your current project data before using this function because it clears project data being edited. When USB conversion cable (CS1W-CIF31) is used for connection, specify the COM port number of the USB port used.

(Automatic online connection button)

