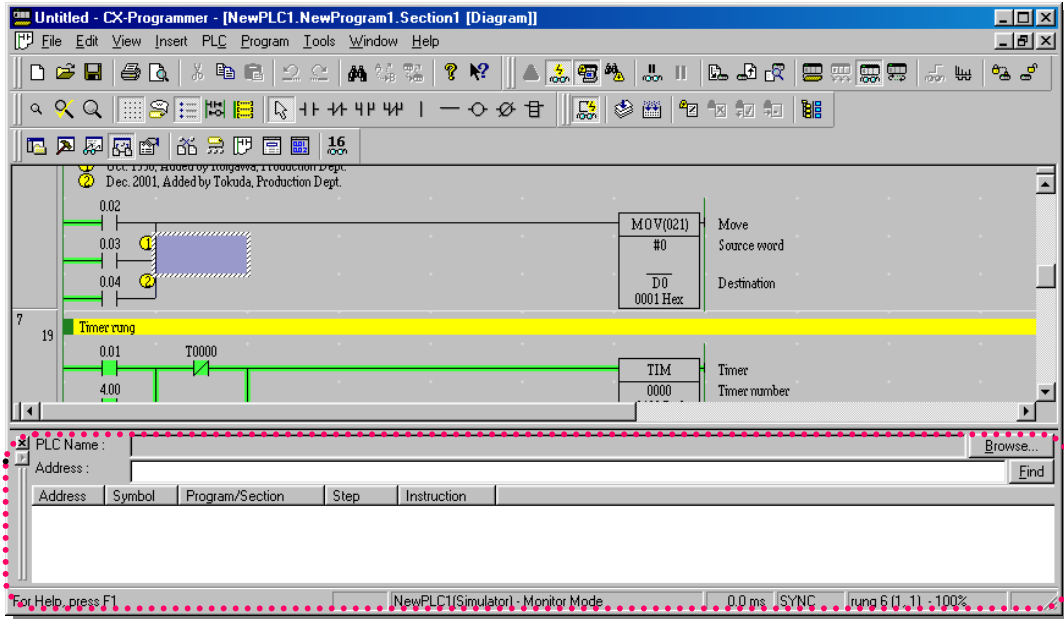




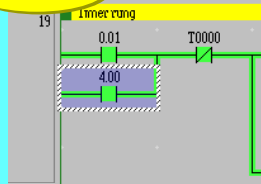
16. Find Function - 1 Find from Address Reference Tool

Display Address Reference Tool.

Alt + 4

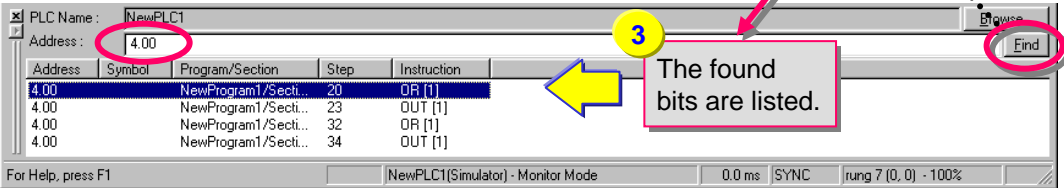


Reference



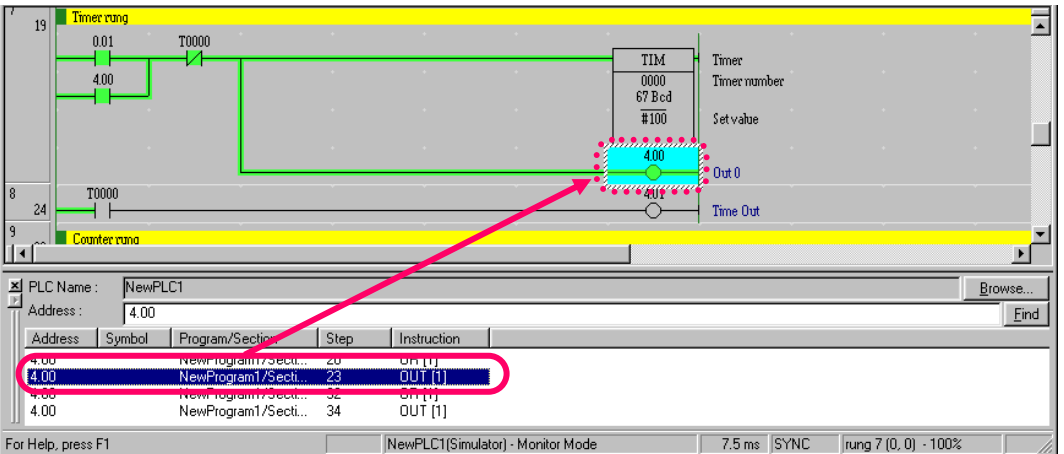
1 Enter a bit number that you want to find in the [Address] field.

2 Click Find



3 The found bits are listed.

You can also move the cursor to a bit that you want to find.



Click a bit that you want to find, and the focus will move to the corresponding position in the rung.