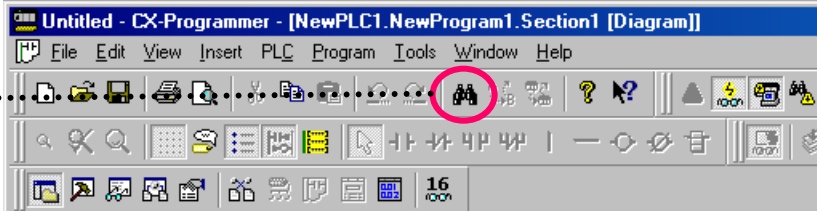


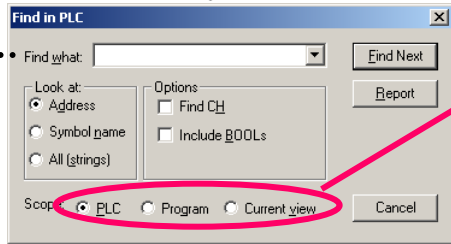
18. Find Function - 3 Find by Keyword in Comment

If you enter an operator's name or an operation date in annotations as a note at startup or maintenance, this function finds the bit or word that the name or date is used and displays the result on Output Window.

Click 



The [Find] dialog shows up.



Scope of Find is specifiable.

PLC

To find a target from all tasks(programs) and symbol table.

Program

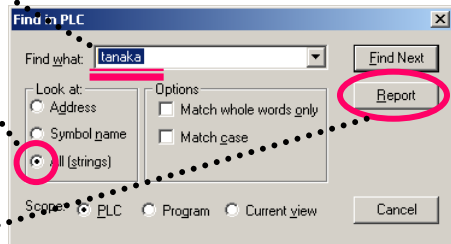
To find a target from all tasks (programs).

Current view

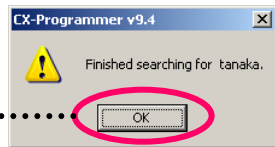
To find from a section or symbol table being edited.

Enter a keyword to find.

Select the [All (strings)].

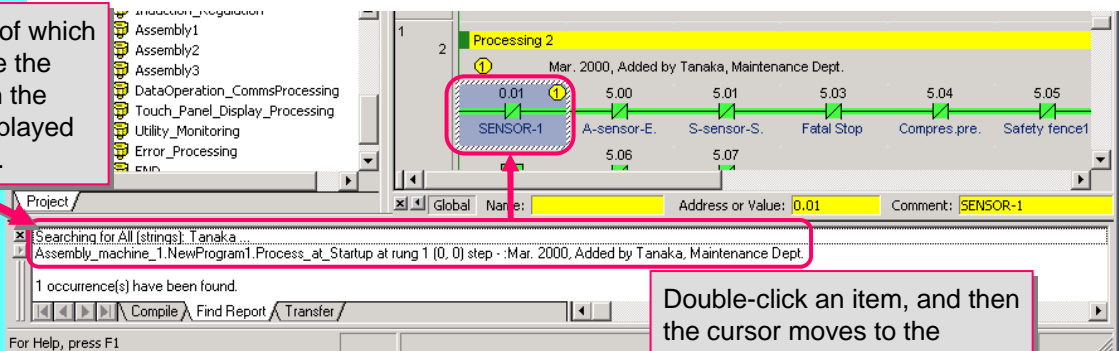


Click 



Click [OK].

The contacts/coils of which annotations include the keyword entered in the Find dialog are displayed on Output Window.



Double-click an item, and then the cursor moves to the applicable bit in Ladder Window.