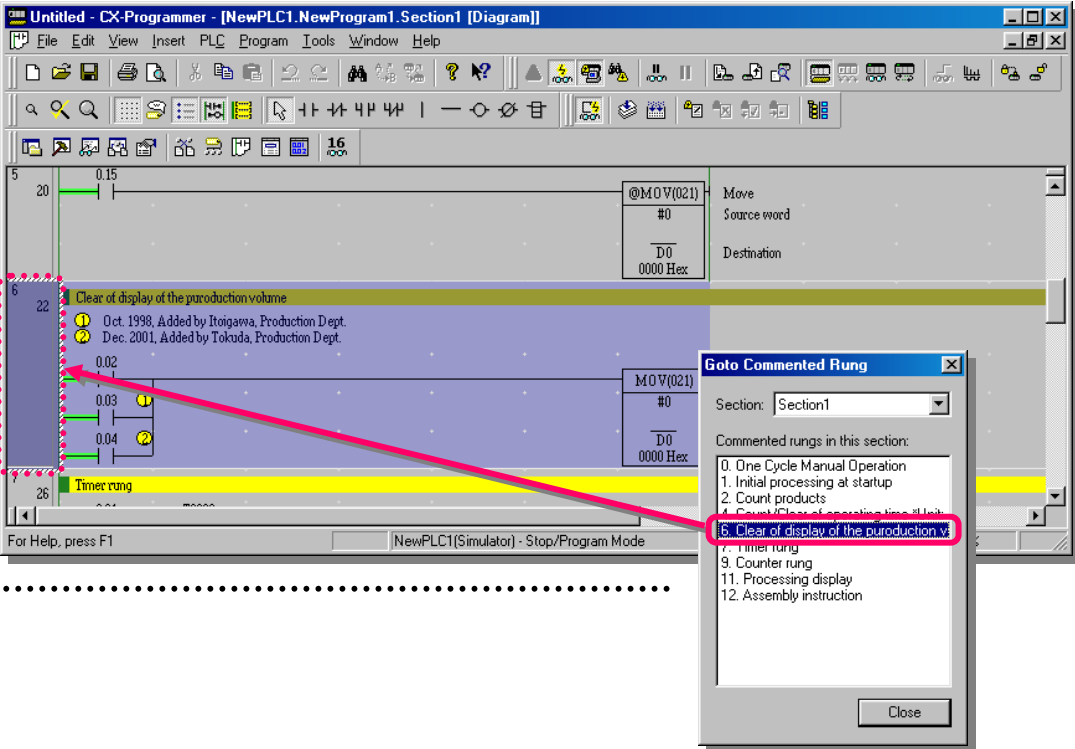
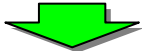
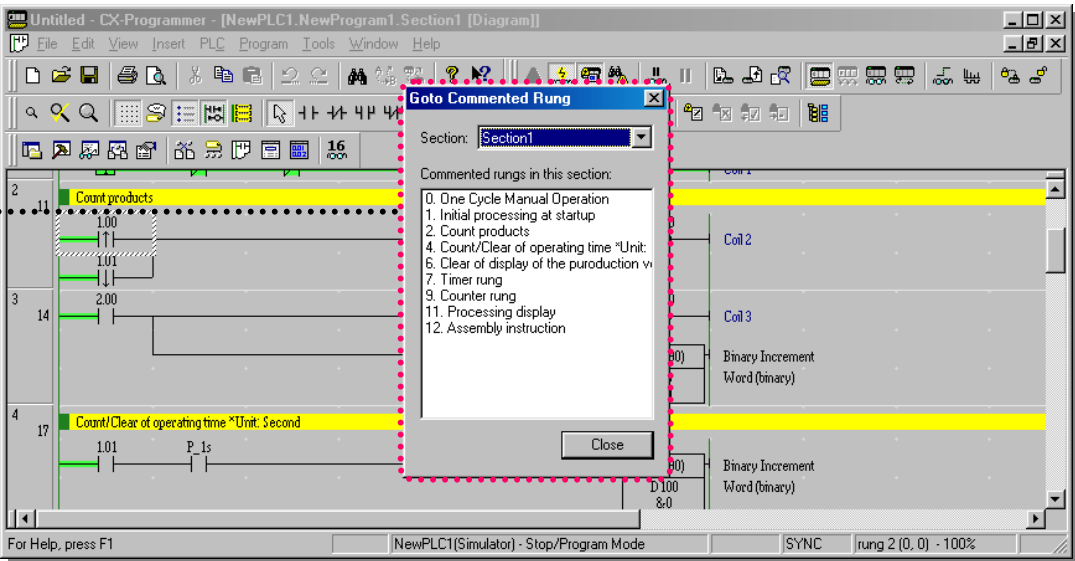
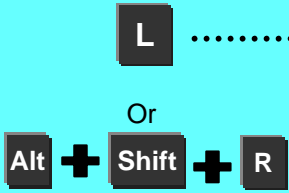




19. Find Function - 4 Go To Rung Comment

This is a function that displays a list of rung comments on the screen and moves the cursor to the position where a selected rung comment is used in the ladder. Rung comments improve the efficiency of debug or maintenance of rungs divided into blocks per function.

A list of the rung comments used in rungs are displayed on a separate window.



Click a rung comment in the list, and the cursor goes to the position where the rung comment is used in the ladder.