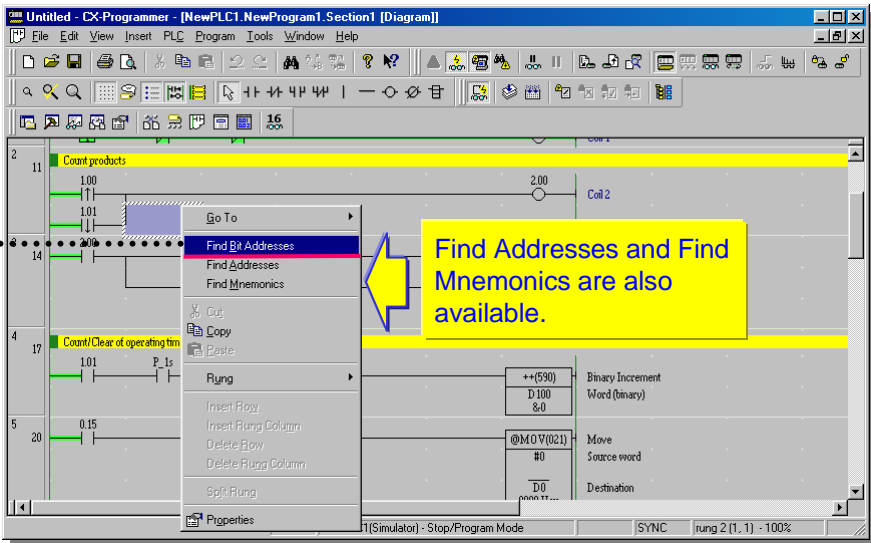
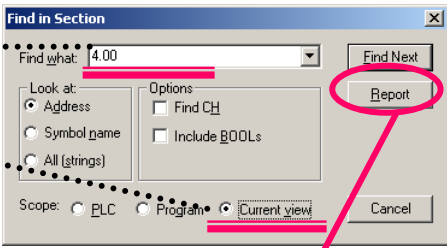


20. Find Function - 5 Find Bit Addresses

Click the right mouse button on Ladder Window. Select [Find Bit Addresses] from the popup menu.



Enter an address (bit number) to find. (period between a channel and a bit is unnecessary.)



Set the scope of Find (Current view).

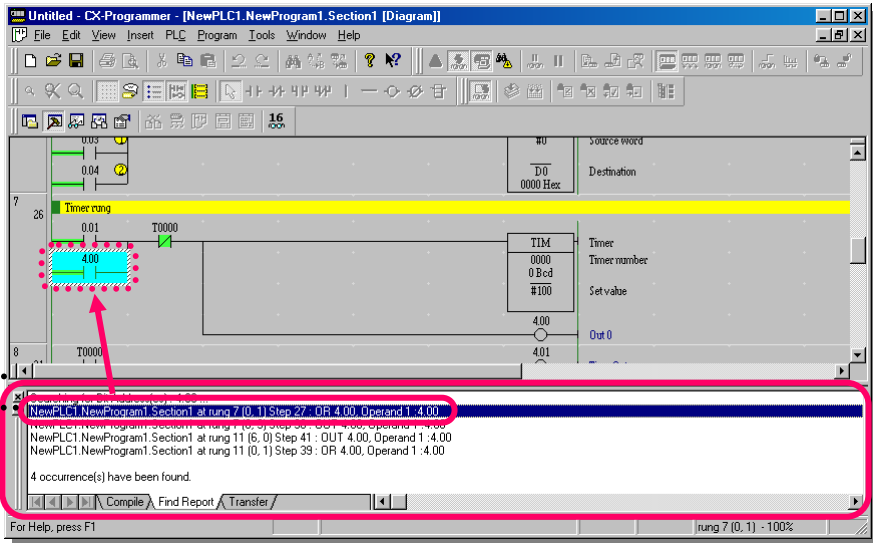
Click [Report].



Click [OK].



Output Window is displayed and the results are listed.



Double-click an item in the list, and the cursor will go to the applicable bit.