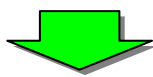
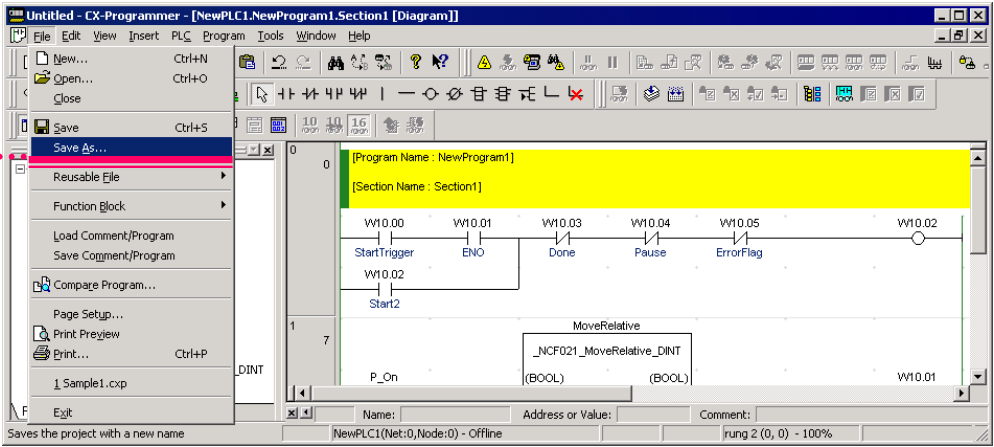


Saving a Project

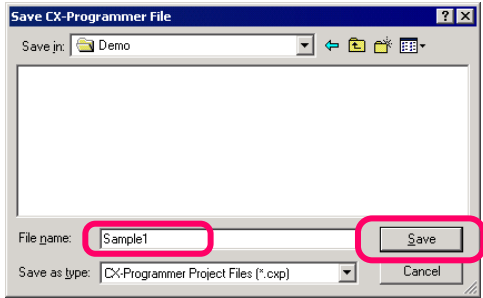
Saving a CX-Programmer file

Unit setting, Unit parameter setting, and programs using the CX-Programmer can be saved all at once.

From the [File] menu, select [Save As...]



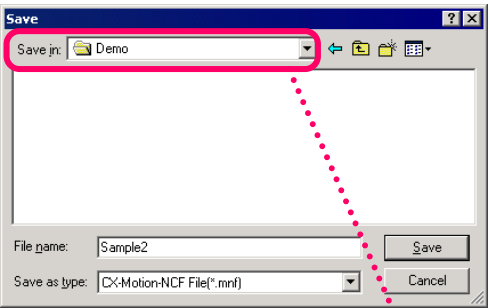
Save it with a name. In this example save as "Sample1".



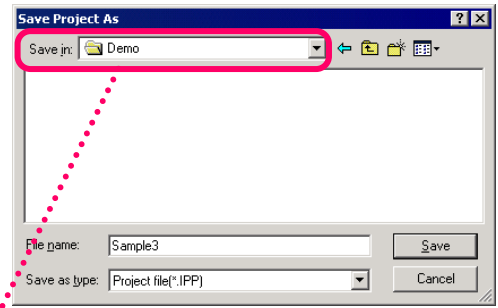
Saving CX-Designer and CX-Motion-NCF/MCH files

Created data can be saved for CX-Designer and CX-Motion-NCF/MCH. Save CX-Motion-NCF as "Sample2.mnf" (CX-Motion-MCH as "Sample5.mnh"), and CX-Designer as "Sample3.ipp".

Saving screen for CX-Motion-NCF



Saving screen for CX-Designer



If you run a dedicated Support Software such as CX-Motion-NCF or CX-Designer when CX-Programmer is started, the same default folder location as that of CX-Programmer is used for reading and saving files. It allows easier CX-One Support Software file management.